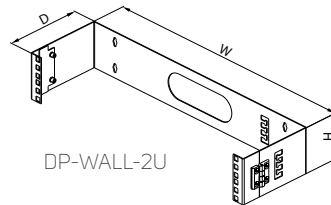
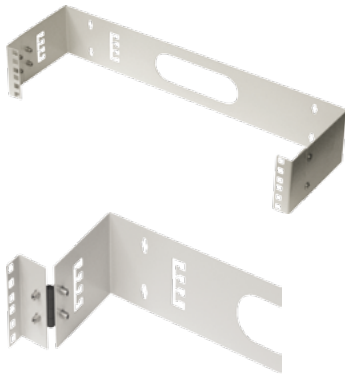


ACCESSORIES

OTHERS

19" WALL-MOUNTING HOLDERS



Code	H (in U)	W	Depth (mm)	Package
DP-WALL-2U	2	19"	150	1 pc
DP-WALL-4U	4	19"	150	1 pc

- For 19" wall equipment installation
- 2U and 4U in height
- Mounting holes (for wall installation) on rear
- Holder equipped with hinges (enables equipment to swing open from wall)
- Side cable entry openings
- Color: powder-coated RAL 7035
- Package includes: 1x Wall-mounting holder

CASTORS & FEET



DP-KO-H1



DP-KO-H2



DP-KO-02



DP-KO-01



DP-KO-TC



DP-NO-01

Code	Description	Load rating per castor (kg)*	Package
DP-KO-01	Castor for free-standing cabinet	50 kg	1 pc of set 1
DP-KO-02	Lockable castor for free-standing cabinet	50 kg	1 pc of set 1
DP-KO-H1	High-load castor for free-standing cabinet	100 kg	1 pc of set 1
DP-KO-H2	Lockable high-load castor for free-standing cabinet	100 kg	1 pc of set 1
DP-NO-01	Adjustable foot for free-standing cabinet	-	1 pc of set 2
DP-KO-TC	Transport castors for free-standing racks	30 kg	1 pc of set 3

* Castor load rating = (rack weight + device weight) / 3

- Package includes:
 - Set 1: 1x castor, 1x screw M10, 1x washer
 - Set 2: 1x foot
 - Set 3: 4x castors

LIGHTING UNITS



DP-OJ-05



DP-OJ-01



DP-OJ-04

- Illuminates rack
- DP-OJ-01 and DP-OJ-05 ready for 19" installation
- DP-OJ-04 and DP-OJ-05 can be magnetically fixed into place on any sheet steel part in/on rack (OU installation)
- Automatic function ensured by motion sensor (DP-OJ-05 only)
- Package includes:
 - DP-OJ-01: 1x 19" light unit, 1x power cord
 - DP-OJ-04: 1x light unit (magnetic), 1x power cord
 - DP-OJ-05: 1x light unit (magnetic), 1x 19" holder, 2x screws M5, 1x power cord

Code	Description	Package
DP-OJ-01	Lighting unit – telescopic, 19" installation, florescent tube 230 V/50 Hz with switch	1 pc
DP-OJ-04	Lighting unit, 5 W, LED technology, magnets for easy fixing	1 pc
DP-OJ-05	Lighting unit, 11 W, motion sensor, magnets for easy fixing or 19" installation	1 pc

CABLE PROTECTION IN OPENINGS

DP-KP-KAR



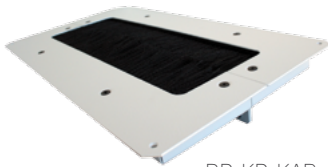
DP-KP-HCE2



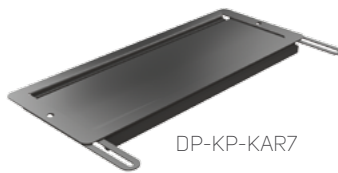
DP-KP-RB4



DP-KP-KAR9



DP-KP-KAR-A



DP-KP-KAR7



DP-KP-KAR4



DP-KP-KAR4-D

- Protective strips and brush panels help protect cable entries, limiting dust penetration
- Installed in cable entry openings (300x100 mm or 300x50 mm)
- Mounting holes (for wall installation) on rear

Code	Description	Available colors		Package
		RAL 7035	RAL 9005	
DP-KP-LEM	Protective edging of cable entries (length 790 mm)	–	yes	1 pc
DP-KP-HCE2	Hermetic cable entry for rack with IP54 (opening 300x100 mm)	yes	yes	1 pc
DP-KP-KAR	Cable entry covered with brush for iSEVEN and Premium series (opening 300x100 mm)	yes	yes	1 pc
DP-KP-KAR3	Cable entry 150x56 mm covered with brush for RUN, RUD, REN series	yes	–	1 pc
DP-KP-KAR4	Cable entry, two layers of brushes (opening 300x100 mm)	yes	yes	1 pc
DP-KP-KAR4-D	Cable entry, two layers of brushes, divided version (opening 300x100 mm)	yes	yes	1 pc
DP-KP-KAR5	Cable entry 300x50 mm, covered with brush	yes	yes	1 pc
DP-KP-KAR6	Dust-proof brush for cable entry 500x110 mm (for RI7/RM7), two pieces of brushes and two pieces of rubber for edges of cable entry	–	yes	1 pc
DP-KP-KAR7	Slidable cover for cable entry 300x100 mm	yes	yes	1 pc
DP-KP-KAR9	Cable entry with radius cable protection, for 300x100 mm opening	yes	yes	1 pc
DP-KP-RB4	Cable entry diameter 100 mm (4"), covered with brush	–	yes	1 pc
DP-KP-RP4	Cable entry diameter 100 mm (4"), plastic	–	yes	1 pc
DP-KP-KAR-A	Cable entry for raised floor tiles, two layers of brushes (opening 410x215 mm)	yes	yes	1 pc

www.conteg.com



CONTEG, spol. s r.o.

Headquarters:

Na Vítězské pláni 1719/4
140 00 Prague 4
Czech Republic
Tel.: +420 261 219 182
conteg@conteg.com
www.conteg.com

Production plant:

K Silu 2179
393 01 Pelhřimov
Czech Republic
Tel.: +420 565 300 300

Local Branches/Offices:

Austria/Germany/Switzerland:	+420 261 219 182
Benelux:	+31 76 5420 709
Southeastern Europe:	+49 172 8484 346
Finland:	+358 50 414 1257
France/Italy/Maghreb:	+33 1 60 04 55 90
Middle East:	+971 55 508 3241
Russia/CIS:	+7 495 967 3840
Saudi Arabia:	+966 54 000 2341

CONTEG