



DATASHEET
Free-standing
compact
enclosures
FSM

CONTEG

FSM—

FREE-STANDING COMPACT CABINETS



FSM-201004

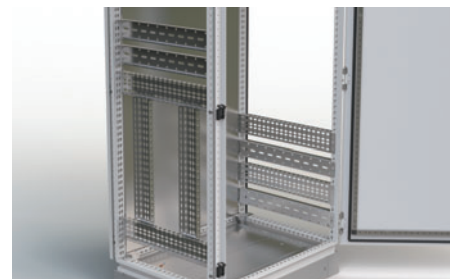
➤ **FSM free-standing compact cabinets** are made of sheet steel with side panels integrated in the frame and will withstand even the most demanding industrial environments. The compact welded construction of the cabinet is made of profiled side panels joined together by crossbar profiles. This manufacturing method can meet the highest requirements for rigidity and lends the cabinet 700 kg of load-bearing capacity. Thanks to the design of the bottom frame, FSM can be used even without an extra plinth. To create a variety of mounting surfaces and planes, we offer a wide range of system accessories designed for optimal use of the frame profile. We also supply components to control the environment inside the cabinet, such as heating units, filtered fans or active cooling units.

MAIN ADVANTAGES

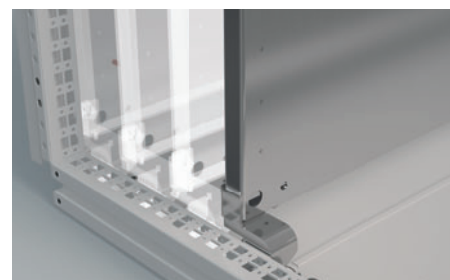
- Welded compact construction with integrated side panels—powder coated
- Load capacity 700 kg
- Single-door and double-door cabinet designs
- Can be installed without an additional supporting plinth
- Designer lift-up handle—the standard for all cabinet types
- Easy to close doors thanks to a special locking system
- Maximum use of interior space—possibility of placing the mounting plate between the rear posts
- Side panels integrated in the frame
- 28 sizes from 1 400 × 600 × 300 mm up to 2 000 × 1 600 × 500 mm
- Wide assortment of accessories
- Wide assortment of tailor-made customer solutions—cut-outs according to your requirements before and after final surface finishing accessories



FSM-201004



Wide range of system rails creates additional mounting levels for individual installation.



Maximum use of interior space—possibility of placing the mounting plate between the rear uprights.

FSM—FREE-STANDING COMPACT CABINETS

SHEET STEEL



COLOR:  RAL 7035



DESCRIPTION

- | | | | |
|--|--|---|--|
| <p>Material</p> <ul style="list-style-type: none"> • Cabinet: sheet steel • Mounting plate: zinc-plated sheet steel <p>Cabinet surface finish</p> <ul style="list-style-type: none"> • Epoxy polyester powder coating <p>Color</p> <ul style="list-style-type: none"> • RAL 7035 for indoor use | <p>Degree of protection</p> <ul style="list-style-type: none"> • IP55 according to the EN 60529 norm (the degree of protection can be reduced after mounting some accessories) <p>Mechanical durability</p> <ul style="list-style-type: none"> • IK10 according to IEC 62262 | <p>Supply includes</p> <ul style="list-style-type: none"> • Welded construction with integrated side panels • Full door with swing handle (single-door/two-door); the doors are equipped with a four-point locking system • The door hinges are located on the right-hand side of the single- | <p>door rack cabinet (option to switch the door mounting from right to left is available)</p> <ul style="list-style-type: none"> • Rear and top panel • Multi-part gland plate • Mounting plate with raster |
|--|--|---|--|

FSM—FREE-STANDING COMPACT CABINETS, HEIGHT 1 400 AND 1 600 mm										
Cabinet	H (mm)	1400	1400	1600	1600	1600	1600	1600	1600	1600
	W (mm)	600	600	600	800	800	1000	1000	1000	1200
	D (mm)	300	400	400	300	400	300	400	300	400
Mounting plate	H1 (mm)	1291	1291	1491	1491	1491	1491	1491	1491	1491
	W2 (mm)	497	497	497	697	697	897	897	897	1097
Material thickness (mm)	Rear and top panel	1.5	1.5	1.5	1.5	1.5	1.5	1.5	1.5	1.5
	Door	2	2	2	2	2	2	2	2	2
	Mounting plate	3	3	3	3	3	3	3	3	3
Door		1	1	1	1	1	1	1	2	2
Gland plate, number of parts		2	2	2	2	2	2	2	2	4
Weight (kg)		75	81	82	104	109	120	132	146	158
Code	1 pc	FSM-140603	FSM-140604	FSM-160604	FSM-160803	FSM-160804	FSM-161003	FSM-161004	FSM-261003	FSM-261204

ACCESSORIES											
Plinth 100 mm	front and rear	1 set	ID-F-PF06	ID-F-PF06	ID-F-PF06	ID-F-PF08	ID-F-PF08	ID-F-PF10	ID-F-PF10	ID-F-PF10	ID-F-PF12
	side parts		ID-F-PS03	ID-F-PS04	ID-F-PS04	ID-F-PS03	ID-F-PS04	ID-F-PS03	ID-F-PS04	ID-F-PS03	ID-F-PS04
Plinth 200 mm	front and rear	1 set	ID-F-PF0602	ID-F-PF0602	ID-F-PF0602	ID-F-PF0802	ID-F-PF0802	ID-F-PF1002	ID-F-PF1002	ID-F-PF1002	ID-F-PF1202
	side parts		ID-F-PS0302	ID-F-PS0402	ID-F-PS0402	ID-F-PS0302	ID-F-PS0402	ID-F-PS0302	ID-F-PS0402	ID-F-PS0302	ID-F-PS0402

To order the cabinet without the mounting plate, use order number FSM-xxxxxx-01.

FSM—FREE-STANDING COMPACT CABINETS, HEIGHT 1 800 mm									
Cabinet	H (mm)	1800	1800	1800	1800	1800	1800	1800	
	W (mm)	600	800	800	1000	1000	1200	1600	
	D (mm)	400	300	400	400	400	400	400	
Mounting plate	H1 (mm)	1691	1691	1691	1691	1691	1691	1691	
	W2 (mm)	497	697	697	897	897	1097	2x 697	
Material thickness (mm)	Rear and top panel	1.5	1.5	1.5	1.5	1.5	1.5	1.5	
	Door	2	2	2	2	2	2	2	
	Mounting plate	3	3	3	3	3	3	3	
Door		1	1	1	1	2	2	2	
Gland plate, number of parts		2	2	2	2	2	4	4	
Weight (kg)		99	104	109	146	158	176	228	
Code	1 pc	FSM-180604	FSM-180803	FSM-180804	FSM-181004	FSM-281004	FSM-281204	FSM-281604	
ACCESSORIES									
Plinth 100 mm	front and rear	1 set	ID-F-PF06	ID-F-PF08	ID-F-PF08	ID-F-PF10	ID-F-PF10	ID-F-PF12	ID-F-PF16
	side parts		ID-F-PS04	ID-F-PS03	ID-F-PS04	ID-F-PS04	ID-F-PS04	ID-F-PS04	ID-F-PS04
Plinth 200 mm	front and rear	1 set	ID-F-PF0602	ID-F-PF0802	ID-F-PF0802	ID-F-PF1002	ID-F-PF1002	ID-F-PF1202	ID-F-PF1602
	side parts		ID-F-PS0402	ID-F-PS0302	ID-F-PS0402	ID-F-PS0402	ID-F-PS0402	ID-F-PS0402	ID-F-PS0402

To order the cabinet without the mounting plate, use order number FSM-xxxxxx-01.

FSM—FREE-STANDING COMPACT CABINETS, HEIGHT 2 000 mm								
Cabinet	H (mm)	2000	2000	2000	2000	2000	2000	2000
	W (mm)	600	600	800	800	800	1000	1000
	D (mm)	300	400	300	400	500	400	400
Mounting plate	H1 (mm)	1891	1891	1891	1891	1891	1891	1891
	W2 (mm)	497	497	697	697	697	897	897
Material thickness (mm)	Rear and top panel	1.5	1.5	1.5	1.5	1.5	1.5	1.5
	Door	2	2	2	2	2	2	2
	Mounting plate	3	3	3	3	3	3	3
Door		1	1	1	1	1	1	1
Gland plate, number of parts		2	2	2	2	2	2	2
Weight (kg)		102	107	124	132	138	159	159
Code	1 pc	FSM-200603	FSM-200604	FSM-200803	FSM-200804	FSM-200805	FSM-201004	
ACCESSORIES								
Plinth 100 mm	front and rear	1 set	ID-F-PF06	ID-F-PF06	ID-F-PF08	ID-F-PF08	ID-F-PF08	ID-F-PF10
	side parts		ID-F-PS03	ID-F-PS04	ID-F-PS03	ID-F-PS04	ID-F-PS05	ID-F-PS04
Plinth 200 mm	front and rear	1 set	ID-F-PF0602	ID-F-PF0602	ID-F-PF0802	ID-F-PF0802	ID-F-PF0802	ID-F-PF1002
	side parts		ID-F-PS0302	ID-F-PS0402	ID-F-PS0302	ID-F-PS0402	ID-F-PS0502	ID-F-PS0402

To order the cabinet without the mounting plate, use order number FSM-xxxxxx-01.

FSM—FREE-STANDING COMPACT CABINETS, HEIGHT 2 000 mm							
Cabinet	H (mm)		2000	2000	2000	2000	2000
	W (mm)		1000	1000	1200	1200	1600
	D (mm)		400	500	400	500	400
Mounting plate	H1 (mm)		1891	1891	1891	1891	1891
	W2 (mm)		897	897	1097	1097	2x 697
Material thickness (mm)	Rear and top panel		1.5	1.5	1.5	1.5	1.5
	Door		2	2	2	2	2
	Mounting plate		3	3	3	3	3
Door			2	2	2	2	2
Gland plate, number of parts			2	2	4	4	4
Weight (kg)			165	172	190	197	249
Code	1 pc		FSM-301004	FSM-301005	FSM-301204	FSM-301205	FSM-301604
ACCESSORIES							
Plinth 100 mm	front and rear	1 set	ID-F-PF10	ID-F-PF10	ID-F-PF12	ID-F-PF12	ID-F-PF16
	side parts		ID-F-PS04	ID-F-PS05	ID-F-PS04	ID-F-PS05	ID-F-PS04
Plinth 200 mm	front and rear	1 set	ID-F-PF1002	ID-F-PF1002	ID-F-PF1202	ID-F-PF1202	ID-F-PF1602
	side parts		ID-F-PS0402	ID-F-PS0502	ID-F-PS0402	ID-F-PS0502	ID-F-PS0402

To order the cabinet without the mounting plate, use order number FSM-xxxxxx-01.

Recommended Accessories



Cooling units



Filter fans



Horizontal and vertical extrusions

ACCESSORIES

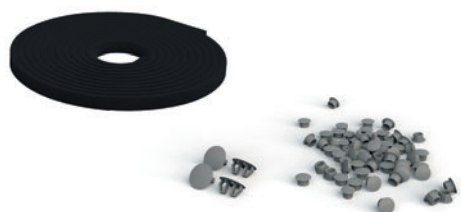
PLINTHS



- Material: corner pieces 2mm, other 1.5mm sheet steel
- Color: RAL 9005
- It is necessary to order front and side set together
- Possibility of installing two plinths of 100 mm height apart
- Supply includes: mounting accessories

Code for 100 mm high plinth	Code for 200 mm high plinth	For cabinet width (mm)	Package
Plinth—front and rear set			
ID-F-PF06	ID-F-PF0602	600	1 set
ID-F-PF08	ID-F-PF0802	800	1 set
ID-F-PF10	ID-F-PF1002	1000	1 set
ID-F-PF12	ID-F-PF1202	1200	1 set
ID-F-PF16	ID-F-PF1602	1600	1 set
Plinth—sides set			
ID-F-PS03	ID-F-PS0302	300	1 set
ID-F-PS04	ID-F-PS0402	400	1 set
ID-F-PS05	ID-F-PS0502	500	1 set

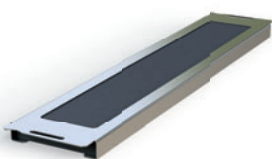
SEALING SET IP55



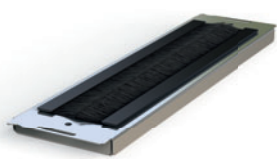
- Material: PVC
- Application: plugs and sealing tape for IP55 protection
- Supply includes: whole set for FSM cabinets

Code	Package
ID-F-KIT55	1 pc

CABLE GLAND PLATE WITH GASKET



ID-F-CG1xx

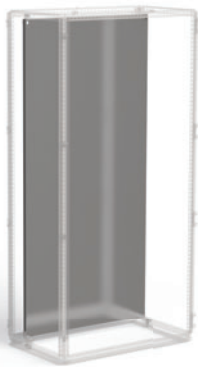


ID-F-CG2xx

- Material: 1mm zinc-plated sheet steel
- Application: for cable introduction
- Version: with PU sealing (ID-F-CG1xx); with two rows of brushes (ID-F-CG2xx)
- Mounting: between the frame profiles to replace the cable gland plate
- Supply includes: mounting accessories

Code	Code	For cabinet width (mm)	Package
ID-F-CG104	ID-F-CG204	400	1 set
ID-F-CG106	ID-F-CG206	600	1 set
ID-F-CG108	ID-F-CG208	800	1 set
ID-F-CG110	ID-F-CG210	1000	1 set
ID-F-CG112	ID-F-CG212	1200	1 set

SPARE MOUNTING PLATE



- Material: 3mm zinc-plated sheet steel
- Supply includes: mounting plate with marked raster, mounting accessories and brackets

Code	For cabinet height × width (mm)
ID-F-SP1804	1 800 × 400
ID-F-SP1806	1 800 × 600
ID-F-SP1808	1 800 × 800
ID-F-SP1810	1 800 × 1 000
ID-F-SP1812	1 800 × 1 200
ID-F-SP2004	2 000 × 400
ID-F-SP2006	2 000 × 600
ID-F-SP2008	2 000 × 800
ID-F-SP2010	2 000 × 1 000
ID-F-SP2012	2 000 × 1 200

LOWER BRACKETS FOR MOUNTING PLATES



- Material: 5 mm zinc-plated sheet steel
- Application: to allow the mounting plate to be moved out of the rear position of the frame
- Mounting: mount on the lower side of the frame profile
- Supply includes: mounting accessories

Code	Package
ID-F-SBR	1 pc

SIDE BRACKETS FOR MOUNTING PLATES



- Material: 2mm zinc-plated sheet
- Application: for additional mounting plate fixation and vibration reduction
- Mounting: mount on horizontal ID-F-Hxx or ID-F-NHxx rails or directly on the upright
- Supply includes: mounting accessories

Code	Package
ID-F-LBP	1 set

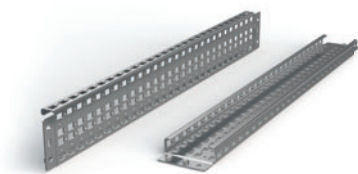
EYE BOLTS



- Eye bolts for crane transport
- Application: for assembling with FSM, holes with internal threads under roof
- Material: zinc-plated carbon steel
- DIN580
- M12
- Package includes: 4 pcs

Code	Package
ID-F-EB	1 set

HORIZONTAL/VERTICAL EXTRUSIONS



ID-F-H (for mounting on the sides of the frame profiles)



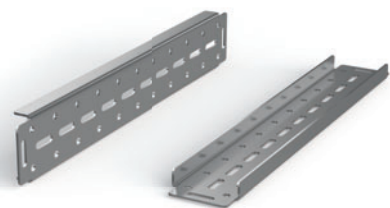
ID-F-NH (for mounting between the frame profiles)

- Material: 2mm zinc-plated sheet steel
- Rail width: 90 mm (ID-F-H), 41.2 mm (ID-F-NH)
- Application: to create more mounting planes (horizontal and vertical)
- Mounting: ID-F-Hx on the sides of the frame profiles
- Mounting: ID-F-NHx between the frame profiles
- Supply includes: mounting accessories

Code	For cabinet height/width/depth (mm)	Load capacity in horizontal position	Load capacity in vertical position	Package *
Mounting on the sides of the frame profiles				
ID-F-H4	400	140 kg	240 kg	1 set
ID-F-H5	500	100 kg	240 kg	1 set
ID-F-H6	600	70 kg	240 kg	1 set
ID-F-H8	800	50 kg	180 kg	1 set
ID-F-H10	1000	50 kg	140 kg	1 set
ID-F-H12	1200	50 kg	120 kg	1 set
ID-F-H18	1800	36 kg	80 kg	1 set
ID-F-H20	2000	32 kg	70 kg	1 set
Mounting between the frame profiles				
ID-F-NH4	400	95 kg	95 kg	1 set
ID-F-NH5	500	85 kg	85 kg	1 set
ID-F-NH6	600	70 kg	70 kg	1 set
ID-F-NH8	800	56 kg	56 kg	1 set
ID-F-NH10	1000	45 kg	45 kg	1 set
ID-F-NH12	1200	35 kg	35 kg	1 set
ID-F-NH18	1800	21 kg	21 kg	1 set
ID-F-NH20	2000	20 kg	20 kg	1 set

* 1 set—2 pcs.

HORIZONTAL EXTRUSIONS



- Material: 3mm zinc-plated sheet steel
- Rail width: 87.5 mm
- Application: for installing high weight components
- Mounting: mount on frame profiles
- Supply includes: mounting accessories

Code	For cabinet width/depth (mm)	Load capacity in horizontal position	Package *
ID-F-HH4	400	260 kg	1 set
ID-F-HH5	500	210 kg	1 set
ID-F-HH6	600	175 kg	1 set
ID-F-HH8	800	130 kg	1 set
ID-F-HH10	1000	100 kg	1 set
ID-F-HH12	1200	65 kg	1 set

* 1 set—2 pcs.

DOOR-MOUNTING RAILS

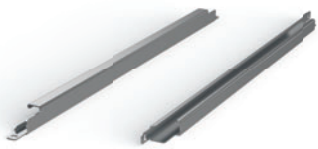


- Material: 2mm zinc-plated sheet steel
- Rail width: 20 mm
- Application: for creating more mounting planes on the inner sides of the doors
- Mounting: into the door frame
- Supply includes: mounting accessories

Code	For door/wing dimensions (mm)	Package *
ID-F-VD4	400	1 set
ID-F-VD5	500	1 set
ID-F-VD6	600	1 set
ID-F-VD8	800	1 set
ID-F-VD10	1000	1 set

* 1 set—2 pcs.

PROFILE FOR CABLE FIXING



ID-F-RC



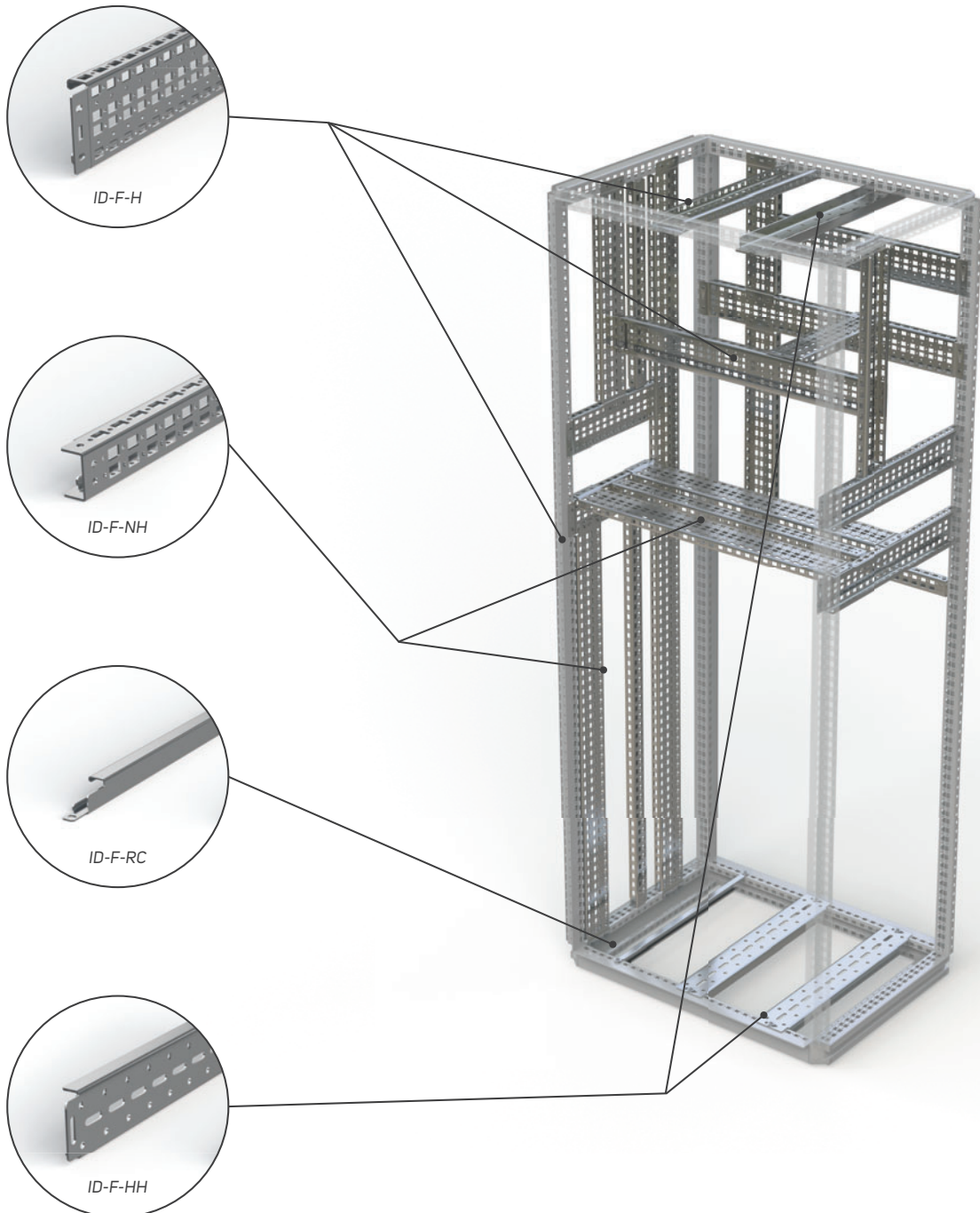
ID-F-RCU

- Material: 2mm zinc-plated sheet steel
- Application: for cable glands
- Mounting: mount on the lower side profile of the frame or on the mounting plate (ID-F-RCUxx)
- Mounting: mount between the bottom side frame profiles (ID-F-RCxx)
- Supply includes: mounting accessories

Code	Code	For cabinet width/depth (mm)	Package *
ID-F-RC4	ID-F-RCU4	400	1 set
ID-F-RC6	ID-F-RCU6	600	1 set
ID-F-RC8	ID-F-RCU8	800	1 set
ID-F-RC10	ID-F-RCU10	1000	1 set
ID-F-RC12	ID-F-RCU12	1200	1 set

* 1 set—2 pcs.

Possible to install horizontal and vertical rails



19" RAILS



- Material: 2mm zinc-plated sheet steel
- Application: to make 19" planes in the FSM cabinets
- Mounting: onto the ID-F-UBxx + ID-F-Hxx brackets
- Supply includes: 19" vertical extrusions and mounting accessories

Code *	For cabinet height × width (mm)	Package
ID-F-V186	1 800 × 600 (36U)	1 set
ID-F-V206	2 000 × 600 (42U)	1 set
ID-F-V188	1 800 × 800 (36U)	1 set
ID-F-V208	2 000 × 800 (42U)	1 set

* It's necessary to order 19" brackets ID-F-UBxx.

19" BRACKETS



ID-F-UB08

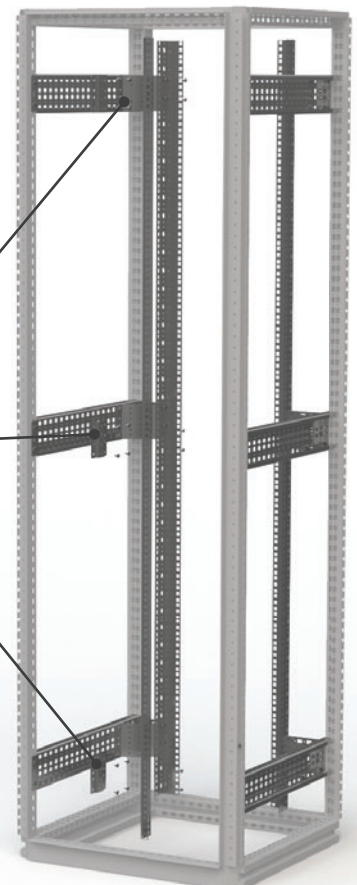
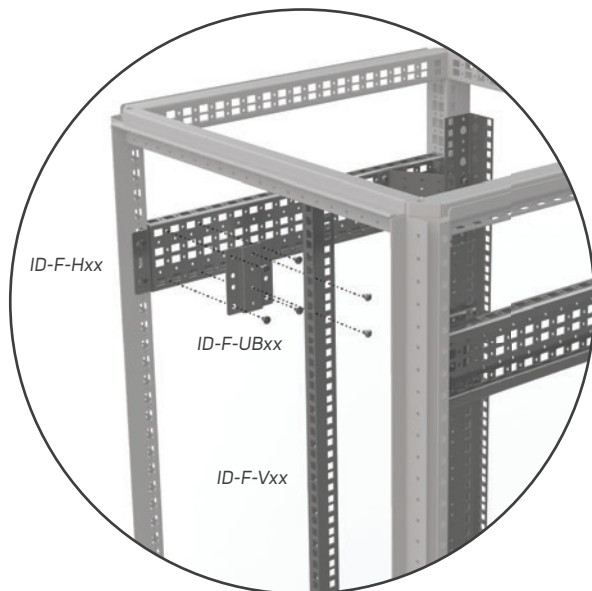
ID-F-UB06

- Material: 1.5mm (ID-F-UB06); 2mm (ID-F-UB08) zinc-plated sheet steel
- Application: to make 19" planes in the FSM cabinets of width 600 and 800 mm
- Mounting: onto system extrusions ID-F-Hxx
- Supply includes: brackets for 19" vertical extrusions and mounting accessories

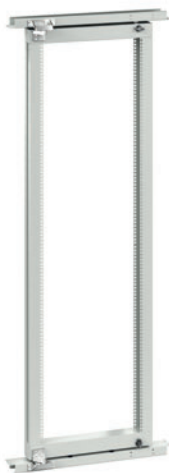
Code	For cabinet width (mm)	Package *
ID-F-UB06	600	1 set
ID-F-UB08	800	1 set

* 1 set—6 pcs.

Mounting 19" extrusion



19" SWING FRAME



- Material: 2mm sheet steel
- Swing frame load-bearing capacity: 150 kg
- Use: to create a swinging 19" plane and an access point to the back of the rack cabinet with width of 800 mm
- Installation: onto the cabinet structure
- Supply includes: 19" swing frame including a lock and horizontal crossbars for mounting

Code	For cabinet height × width (mm)	Package
ID-F-1808-SF15	1800 × 800	1 set
ID-F-2008-SF15	2 000 × 800	1 set

DOOR STOP



- Application: for FSM cabinets
- Supply includes: door stop and mounting accessories

Code	Package
ID-F-DS	1 pc

DOOR SWITCH



- Brackets material: 2mm zinc-plated sheet steel
- Door switch: IP65, plastic, 1NO + 1NC, PG13.5, -25 °C to +70 °C
- Supply includes: door switch and mounting accessories

Code	Package
ID-F-DC	1 pc

UTILITY LECTERN



- Material: 1.5mm sheet steel
- Color: RAL 7035
- Mounting: mount onto the door frame
- Dimensions: depth 356 mm, width—suitable for the specific cabinet dimensions, for cabinets with a width of 1200 mm and double-winged cabinets 1000 mm for one wing
- Supply includes: mounting accessories

Code	For cabinet width (mm)	Package
ID-F-CDD4	400	1 set
ID-F-CDD6	600	1 set
ID-F-CDD8	800	1 set
ID-F-CDD10	1000	1 set
ID-F-CDD102 *	1000	1 set
ID-F-CDD6 *	1200	1 set

* Storage shelf for double-winged cabinet, width makes it suitable for mounting on the right wing.

PARTIAL MOUNTING PLATE



- Material: 3mm zinc-plated sheet steel
- Application: to create additional front and side mounting planes, the plates are versatile and can be mounted horizontally to the appropriate cabinet width or vertically to the appropriate cabinet depth
- Mounting: mount horizontally or vertically on the frame profiles or system rails
- Supply includes: mounting accessories

Code	For cabinet width (mm)	For cabinet depth (mm)	Mounting plane height (mm)
ID-F-PMP0604	600	–	400
ID-F-PMP0604	–	400	600
ID-F-PMP0605	600	–	500
ID-F-PMP0605	–	500	600
ID-F-PMP0804	800	–	400
ID-F-PMP0804	–	400	800
ID-F-PMP0806	800	–	600
ID-F-PMP0806	–	600	800
ID-F-PMP1004	1000	–	400
ID-F-PMP1004	–	400	1000
ID-F-PMP1204	1200	–	400
ID-F-PMP1204	–	400	1200

LOCKS/LOCK INSERTS



- Application: spare inserts instead of the standard 5 mm double-bar
- Supply includes: mounting accessories

Code	Type	Package
ID-F-INLK1	Lock for inTEG FSE, key 5333	1 set
ID-F-INLK3	Lock for inTEG FSE, unique key	1 set
ID-F-INS7	Lock insert 7 mm SQUARE, black ZAMAK	1 set
ID-F-INS8	Lock insert 8 mm SQUARE, black ZAMAK	1 set
ID-F-INT7	Lock insert 7 mm TRIANGULAR, black ZAMAK	1 set
ID-F-INT8	Lock insert 8 mm TRIANGULAR, black ZAMAK	1 set
ID-F-INLKE1	Lockable VW 1 cap	1 set
ID-F-INSS	Complete handle	1 set
ID-F-INSSA	Door plate double-bar 5 mm	1 set

EARTHING



- Material: tinned copper
- Supply includes: various lengths and cross-sections of flat conductors with pressed contact holes with an M8 opening

Code	Type	Package
ID-F-EK1	Flat earthing conductor for M8, length 200 mm, cross-section 16 mm ²	10 pcs
ID-F-EK2	Flat earthing conductor for M8, length 200 mm, cross-section 25 mm ²	10 pcs
ID-F-EK3	Flat earthing conductor for M8, length 300 mm, cross-section 16 mm ²	10 pcs
ID-F-EK4	Flat earthing conductor for M8, length 300 mm, cross-section 25 mm ²	10 pcs

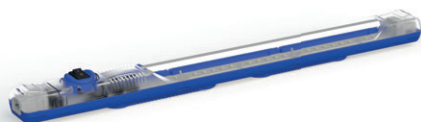
FASTENERS



- Supply includes: M6x16 ISO 7380 Zn (ID-W-SMS6x16) cage nuts, screws, hinge, pull-out brackets and fasteners for FSM (ID-F-CK)

Code	Description	Package
ID-W-CNM6	Cage nut M6	10 pcs
ID-W-SMS6x16	Screw M6x16, ISO 7380, Zn	10 pcs
ID-W-CNM8	Cage nut M8	10 pcs
ID-W-SMS8x16	Screw M8x16, ISO 7380, Zn	10 pcs
ID-F-CK	Hinge, pull-out brackets, replacement fasteners for FSM	1 set

LED LIGHT



- Material: PC, transparent and ABS
- Application: to light up the interior of the cabinet, option of connecting several light fixtures
- Mounting: mount onto the frame profiles or by magnets
- Dimensions: 357.4 × 32 × 31.6 mm
- Degree of protection: IP20
- Supply includes: complete lighting unit with rocker switch, inter-connection cables

Code	Type	Package
ID-F-L	Lighting unit LED 4 W, 24-265 V (DC/AC), 0/50/60 Hz	1 pc

POCKETS FOR DOCUMENTS



- Material: ABS
- Color: RAL 7035
- Dimensions: 234 × 241 × 31 mm (H × W × D)
- Mounting: with a self-adhesive tape
- Supply includes: pocket for documents and self-adhesive tape



- Material: 1mm sheet steel
- Color: RAL 7035
- Mounting: onto the door frame
- Supply includes: pocket for documents and mounting accessories

Code	Package
ID-PO-A4	1 pc

Code	For door/wing dimensions (mm)	Package
ID-F-MP04	400	1 set
ID-F-MP06	600	1 set
ID-F-MP08	800	1 set
ID-F-MP10	1000	1 set
ID-F-MP102 *	1000 2D	1 set
ID-F-MP06 *	1200	1 set

* Pocket for double-winged cabinet, width suitable for mounting onto the right wing.

FILTER FANS



MAIN ADVANTAGES

- Quick assembly without screws and tools into a square cut-out, easy to mount with highly elastic clips
- Easy filter insert replacement from the outside without tools
- Possible to change airflow direction
- Airflow up to 800 m³/h
- Can be mounted in a cabinet with a sheet thickness of 1-2.5 mm
- IP 54 standard degree of protection
- Side and top ventilator placement
- Operating temperature range -10 °C up to +70 °C
- Polyurethane foam sealing around the whole perimeter
- Resistance against UV radiation
- Holes for installation in the CONTEG Modification Center

DESCRIPTION

- Plastic parts made of ABS/PC mix, all parts are self-extinguishing according to UL 94V-0
- Standard color RAL 7035 (different color on request)
- Filter inserts made of synthetic fibres of class G3 according to EN

- 779 and class G4 according to EN 779 and UL 900 class 2 self-extinguishing in class F1 according to DIN 53 438
- Filter inserts are cleaned by washing, compressed air and banging

- Encapsulated fan ball bearings
- IP54 standard degree of protection EN 60529 and NEMA 12 according to UL 50
- IP55 settable (according to EN 60529)

- IP56 when using protective cover against splashing water
- EMC version available on request

Fans

Code	Airflow	Dimensions H x W x D	Voltage **	Frequency	Outlet filter grid	Cut-out dimensions	Degree of protection
ID-EF-01-4	12/15 m ³ /h	106.5 x 106.5 x 59.9 mm	230 VAC	50/60 Hz	ID-EF-01	92 x 92 mm	IP54
ID-EF-01-1	15 m ³ /h	106.5 x 106.5 x 59.9 mm	24 VDC	-	ID-EF-01	92 x 92 mm	IP54
ID-EF-04-4	45/50 m ³ /h	150 x 150 x 65.5 mm	230 VAC	50/60 Hz	ID-EF-03	125 x 125 mm	IP54
ID-EF-04-1	47 m ³ /h	150 x 150 x 65.5 mm	24 VDC	-	ID-EF-03	125 x 125 mm	IP54
ID-EF-10-4	100/110 m ³ /h	203.9 x 203.9 x 87.5 mm	230 VAC	50/60 Hz	ID-EF-05	177 x 177 mm	IP54
ID-EF-10-1	100 m ³ /h	203.9 x 203.9 x 87.5 mm	24 VDC	-	ID-EF-05	177 x 177 mm	IP54
ID-EF-23-4	230/270 m ³ /h	250 x 250 x 115.3 mm	230 VAC	50/60 Hz	ID-EF-07	223 x 223 mm	IP54
ID-EF-22-1	225 m ³ /h	250 x 250 x 115.3 mm	24 VDC	-	ID-EF-07	223 x 223 mm	IP54
ID-EF-52-4	520/580 m ³ /h	325 x 325 x 150.7 mm	230 VAC	50/60 Hz	ID-EF-09	291 x 291 mm	IP54
ID-EF-71-4	710/800 m ³ /h	325 x 325 x 149 mm	230 VAC	50/60 Hz	ID-EF-09	291 x 291 mm	IP54
ID-EFT-42-4 *	420/490 m ³ /h	324 x 324 x 94 mm	230 VAC	50/60 Hz	ID-EF-09	fan 175 x 175 mm/grid 291 x 291 mm	IP54
ID-EO-TC	Thermostat for cooling	55 x 33 x 43 mm	250 VAC/10 A	-	-	-	IP20

* Top version.

** Other input voltage options available upon request.

For more detailed information, please refer to the product catalog "Climate control solutions" at www.conteg.com or contact our sales representatives.

COOLING UNITS



MAIN ADVANTAGES

- Cooling capacity from 320 W up to 4 000 W
- Easy maintenance—units don't require filter inserts
- Higher cooling capacity and reliability thanks to highly efficient condenser made of aluminium
- Units are environmentally friendly—cooling medium R134a
- Robust steel-plated or stainless steel cases
- Simple regulation and monitoring
- Easy and fast mounting (side and top version)
- High-quality components ensure long service life and reliability (such as the Mitsubishi Electric rotary piston compressor)
- Transport units in any position
- World-recognized certifications (UL, CUL, CE)
- Holes for installation in the CONTEG Modification Center

DESCRIPTION

<p>Material</p> <ul style="list-style-type: none"> • Sheet steel/stainless steel <p>Color</p> <ul style="list-style-type: none"> • RAL 7035 	<p>Cooling medium</p> <ul style="list-style-type: none"> • R134a <p>Degree of protection</p> <ul style="list-style-type: none"> • Outer circle IP54 • Inner circle IP24 	<p>Mounting type</p> <ul style="list-style-type: none"> • External • Fully recessed <p>Certification</p> <ul style="list-style-type: none"> • CE, cURus 	<p>Supply includes:</p> <ul style="list-style-type: none"> • Unit prepared for connection and immediate use
---	--	--	---

Cooling units SLIM (wall-mounted or fully recessed mounting)

Code	Cooling capacity	Dimensions H × W × D	Voltage *	Frequency	Version	Cut-out dimensions	Degree of protection
AC-WM3-03-4000	320 W	520 × 270 × 110 mm	230 VAC	50/60 Hz	sheet steel	501 × 251 mm	IP54/IP24
AC-WM3-03-4200	320 W	520 × 270 × 110 mm	230 VAC	50/60 Hz	stainless steel	501 × 251 mm	IP54/IP24
AC-WM3-04-4000	400 W	520 × 320 × 110 mm	230 VAC	50/60 Hz	sheet steel	504 × 308 mm	IP54/IP24
AC-WM3-04-4200	400 W	520 × 320 × 110 mm	230 VAC	50/60 Hz	stainless steel	504 × 308 mm	IP54/IP24
AC-WM3-04-400H	400 W	340 × 520 × 110 mm	230 VAC	50/60 Hz	sheet steel	321 × 501 mm	IP54/IP24
AC-WM3-04-420H	400 W	340 × 520 × 110 mm	230 VAC	50/60 Hz	stainless steel	321 × 501 mm	IP54/IP24
AC-WM3-05-4000	500 W	600 × 320 × 110 mm	230 VAC	50/60 Hz	sheet steel	581 × 301 mm	IP54/IP24
AC-WM3-05-4200	500 W	600 × 320 × 110 mm	230 VAC	50/60 Hz	stainless steel	581 × 301 mm	IP54/IP24
AC-WM3-08-4000	820 W	980 × 395 × 145 mm	230 VAC	50/60 Hz	sheet steel	954 × 376 mm	IP54/IP24
AC-WM3-08-4200	820 W	980 × 395 × 145 mm	230 VAC	50/60 Hz	stainless steel	954 × 376 mm	IP54/IP24
AC-WM3-08-6000	820 W	980 × 395 × 145 mm	400 VAC	50/60 Hz	sheet steel	954 × 376 mm	IP54/IP24
AC-WM3-08-6200	820 W	980 × 395 × 145 mm	400 VAC	50/60 Hz	stainless steel	954 × 376 mm	IP54/IP24
AC-WM3-11-4000	1100 W	1250 × 395 × 145 mm	230 VAC	50/60 Hz	sheet steel	1214 × 376 mm	IP54/IP24
AC-WM3-11-4200	1100 W	1250 × 395 × 145 mm	230 VAC	50/60 Hz	stainless steel	1214 × 376 mm	IP54/IP24
AC-WM3-11-6000	1100 W	1250 × 395 × 145 mm	400 VAC	50/60 Hz	sheet steel	1214 × 376 mm	IP54/IP24
AC-WM3-11-6200	1100 W	1250 × 395 × 145 mm	400 VAC	50/60 Hz	stainless steel	1214 × 376 mm	IP54/IP24
AC-WM3-15-4000	1500 W	1550 × 395 × 145 mm	230 VAC	50/60 Hz	sheet steel	1531 × 376 mm	IP54/IP24
AC-WM3-15-4200	1500 W	1550 × 395 × 145 mm	230 VAC	50/60 Hz	stainless steel	1531 × 376 mm	IP54/IP24
AC-WM3-15-6000	1500 W	1550 × 395 × 145 mm	400 VAC	50/60 Hz	sheet steel	1531 × 376 mm	IP54/IP24
AC-WM3-15-6200	1500 W	1550 × 395 × 145 mm	400 VAC	50/60 Hz	stainless steel	1531 × 376 mm	IP54/IP24

* Other input voltage options available upon request.

Cooling units COMPACT (wall-mounted)

Code	Cooling capacity	Dimensions H × W × D	Voltage *	Frequency	Material	Cut-out dimensions	Degree of protection
AC-WM4-03-4000	320/360 W	500 × 280 × 200 mm	230 VAC	50/60 Hz	Sheet steel	480 × 240 mm	IP54/IP24
AC-WM4-03-4200	320/360 W	500 × 280 × 200 mm	230 VAC	50/60 Hz	Stainless steel	480 × 240 mm	IP54/IP24
AC-WM4-05-4000	550/620 W	650 × 315 × 260 mm	230 VAC	50/60 Hz	Sheet steel	635 × 275 mm	IP54/IP24
AC-WM4-05-4200	550/620 W	650 × 315 × 260 mm	230 VAC	50/60 Hz	Stainless steel	635 × 275 mm	IP54/IP24
AC-WM4-05-6000	550/620 W	650 × 315 × 260 mm	400 VAC	50/60 Hz	Sheet steel	635 × 275 mm	IP54/IP24
AC-WM4-05-6200	550/620 W	650 × 315 × 260 mm	400 VAC	50/60 Hz	Stainless steel	635 × 275 mm	IP54/IP24
AC-WM4-08-4000	750/780 W	650 × 315 × 260 mm	230 VAC	50/60 Hz	Sheet steel	635 × 275 mm	IP54/IP24
AC-WM4-08-4200	750/780 W	650 × 315 × 260 mm	230 VAC	50/60 Hz	Stainless steel	635 × 275 mm	IP54/IP24
AC-WM4-08-6000	750 W	650 × 315 × 260 mm	400 VAC	50/60 Hz	Sheet steel	635 × 275 mm	IP54/IP24
AC-WM4-08-6200	750 W	650 × 315 × 260 mm	400 VAC	50/60 Hz	Stainless steel	635 × 275 mm	IP54/IP24
AC-WM4-10-4000	1000/1080 W	650 × 315 × 260 mm	230 VAC	50/60 Hz	Sheet steel	635 × 275 mm	IP54/IP24
AC-WM4-10-4200	1000/1080 W	650 × 315 × 260 mm	230 VAC	50/60 Hz	Stainless steel	635 × 275 mm	IP54/IP24
AC-WM4-10-6000	1000 W	650 × 315 × 260 mm	400 VAC	50/60 Hz	Sheet steel	635 × 275 mm	IP54/IP24
AC-WM4-10-6200	1000 W	650 × 315 × 260 mm	400 VAC	50/60 Hz	Stainless steel	635 × 275 mm	IP54/IP24
AC-WM4-15-4000	1500/1630 W	980 × 395 × 260 mm	230 VAC	50/60 Hz	Sheet steel	920 × 335 mm	IP54/IP24
AC-WM4-15-4200	1500/1630 W	980 × 395 × 260 mm	230 VAC	50/60 Hz	Stainless steel	920 × 335 mm	IP54/IP24
AC-WM4-15-6000	1500 W	980 × 395 × 260 mm	400 VAC	50/60 Hz	Sheet steel	920 × 335 mm	IP54/IP24
AC-WM4-15-6200	1500 W	980 × 395 × 260 mm	400 VAC	50/60 Hz	Stainless steel	920 × 335 mm	IP54/IP24
AC-WM4-20-4000	2 000 W	980 × 395 × 260 mm	230 VAC	50/60 Hz	Sheet steel	920 × 335 mm	IP54/IP24
AC-WM4-20-4200	2 000 W	980 × 395 × 260 mm	230 VAC	50/60 Hz	Stainless steel	920 × 335 mm	IP54/IP24
AC-WM4-20-6000	2 000 W	980 × 395 × 260 mm	400 VAC	50/60 Hz	Sheet steel	920 × 335 mm	IP54/IP24
AC-WM4-20-6200	2 000 W	980 × 395 × 260 mm	400 VAC	50/60 Hz	Stainless steel	920 × 335 mm	IP54/IP24
AC-WM4-25-4000	2 500 W	1230 × 500 × 340 mm	230 VAC	50/60 Hz	Sheet steel	1130 × 430 mm	IP54/IP24
AC-WM4-25-4200	2 500 W	1230 × 500 × 340 mm	230 VAC	50/60 Hz	Stainless steel	1130 × 430 mm	IP54/IP24
AC-WM4-25-6000	2 500 W	1230 × 500 × 340 mm	400 VAC	50/60 Hz	Sheet steel	1130 × 430 mm	IP54/IP24
AC-WM4-25-6200	2 500 W	1230 × 500 × 340 mm	400 VAC	50/60 Hz	Stainless steel	1130 × 430 mm	IP54/IP24
AC-WM4-30-4000	3 000 W	1230 × 500 × 340 mm	230 VAC	50/60 Hz	Sheet steel	1130 × 430 mm	IP54/IP24
AC-WM4-30-4200	3 000 W	1230 × 500 × 340 mm	230 VAC	50/60 Hz	Stainless steel	1130 × 430 mm	IP54/IP24
AC-WM4-30-6000	3 000 W	1230 × 500 × 340 mm	400 VAC	50/60 Hz	Sheet steel	1130 × 430 mm	IP54/IP24
AC-WM4-30-6200	3 000 W	1230 × 500 × 340 mm	400 VAC	50/60 Hz	Stainless steel	1130 × 430 mm	IP54/IP24
AC-WM4-40-4000	4 000 W	1230 × 500 × 340 mm	230 VAC	50/60 Hz	Sheet steel	1130 × 430 mm	IP54/IP24
AC-WM4-40-4200	4 000 W	1230 × 500 × 340 mm	230 VAC	50/60 Hz	Stainless steel	1130 × 430 mm	IP54/IP24
AC-WM4-40-6000	4 000 W	1230 × 500 × 340 mm	400 VAC	50/60 Hz	Sheet steel	1130 × 430 mm	IP54/IP24
AC-WM4-40-6200	4 000 W	1230 × 500 × 340 mm	400 VAC	50/60 Hz	Stainless steel	1130 × 430 mm	IP54/IP24

* Other input voltage options available upon request.

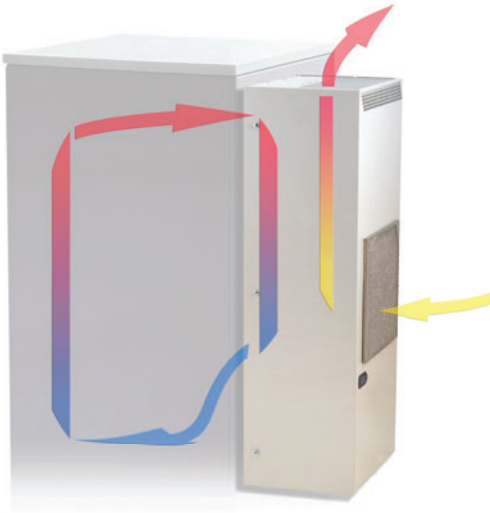
Cooling units TOP (top mounting)

Code	Cooling capacity	Dimensions H × W × D	Voltage *	Frequency	Material	Cut-out dimensions	Degree of protection
AC-TM3-04-4000	450/460 W	230 × 430 × 330 mm	230 VAC	50/60 Hz	Sheet steel	142 × 98 mm/142 × 147,5 mm	IP54/IP24
AC-TM3-04-4200	450/460 W	230 × 430 × 330 mm	230 VAC	50/60 Hz	Stainless steel	142 × 98 mm/142 × 147,5 mm	IP54/IP24
AC-TM3-11-4000	1100/1150 W	400 × 600 × 400 mm	230 VAC	50/60 Hz	Sheet steel	108 × 530 mm (×2)	IP54/IP24
AC-TM3-11-4200	1100/1150 W	400 × 600 × 400 mm	230 VAC	50/60 Hz	Stainless steel	108 × 530 mm (×2)	IP54/IP24
AC-TM3-11-6000	1100/1150 W	400 × 600 × 400 mm	400 VAC	50/60 Hz	Sheet steel	108 × 530 mm (×2)	IP54/IP24
AC-TM3-11-6200	1100/1150 W	400 × 600 × 400 mm	400 VAC	50/60 Hz	Stainless steel	108 × 530 mm (×2)	IP54/IP24
AC-TM3-15-4000	1500 W	410 × 600 × 400 mm	230 VAC	50/60 Hz	Sheet steel	363 × 236,4 mm (×2)	IP54/IP24
AC-TM3-15-4200	1500 W	410 × 600 × 400 mm	230 VAC	50/60 Hz	Stainless steel	363 × 236,4 mm (×2)	IP54/IP24
AC-TM3-15-6000	1500 W	410 × 600 × 400 mm	400 VAC	50/60 Hz	Sheet steel	363 × 236,4 mm (×2)	IP54/IP24
AC-TM3-15-6200	1500 W	410 × 600 × 400 mm	400 VAC	50/60 Hz	Stainless steel	363 × 236,4 mm (×2)	IP54/IP24
AC-TM3-20-6000	2 000 W	410 × 600 × 400 mm	400 VAC	50/60 Hz	Sheet steel	363 × 236,4 mm (×2)	IP54/IP24
AC-TM3-20-6200	2 000 W	410 × 600 × 400 mm	400 VAC	50/60 Hz	Stainless steel	363 × 236,4 mm (×2)	IP54/IP24

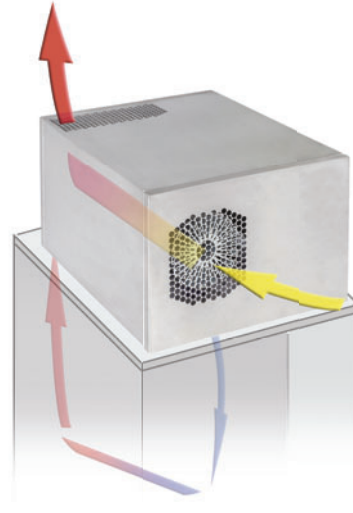
* Other input voltage options available upon request.

AIR FLOW

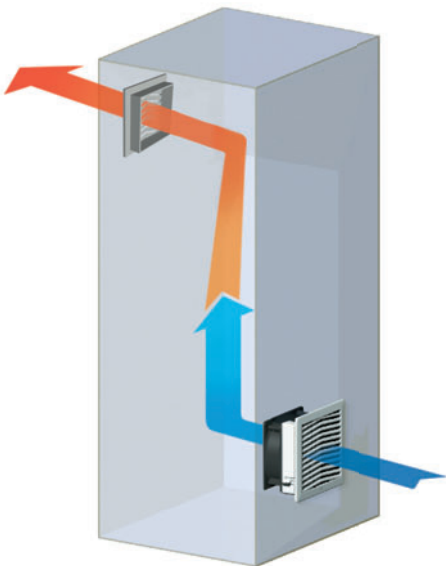
Cooling units—wall-mounted



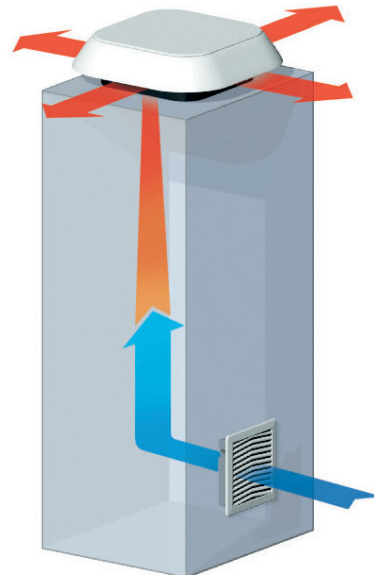
Cooling units—top



Fans—wall-mounted



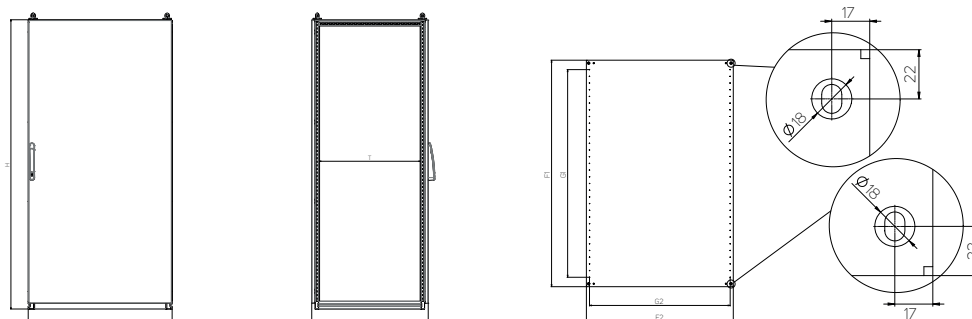
Fans—top



For more detailed information, please refer to the product catalog "Climate control solutions" at www.conteg.com or contact our sales representative.

TECHNICAL DRAWINGS

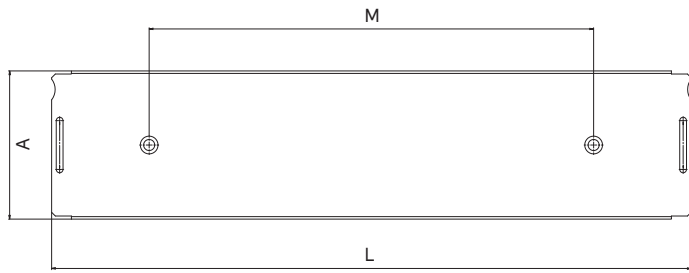
FSM—free-standing compact cabinets—sheet steel



Code	Height (mm)	Width (mm)	Depth (mm)		Mounting plate (mm)				Material thickness (mm)			Type of cable gland plate	# of doors
	H *	W *	D *	T	F1	F2	G1	G2	Cabinet	Door	Mounting plate		
FSM-140603	1400	600	300	210	1291.2	497	1150	450	1.5	2	3	A2; A10	1
FSM-140604	1400	600	400	310	1291.2	497	1150	450	1.5	2	3	A6; B2	1
FSM-160604	1600	600	400	310	1491.2	497	1350	450	1.5	2	3	A6; B2	1
FSM-160803	1600	800	300	210	1491.2	697	1350	650	1.5	2	3	A3; A11	1
FSM-160804	1600	800	400	310	1491.2	697	1350	650	1.5	2	3	A7; B3	1
FSM-161003	1600	1000	300	210	1491.2	897	1350	850	1.5	2	3	A4; A12	1
FSM-161004	1600	1000	400	310	1491.2	897	1350	850	1.5	2	3	A8; B4	1
FSM-261003	1600	1000	300	210	1491.2	897	1350	850	1.5	2	3	A4; A12	2
FSM-261204	1600	1200	400	310	1491.2	1097	1350	1050	1.5	2	3	2× A9; 2× B5	2
FSM-180604	1800	600	400	310	1691.2	497	1550	450	1.5	2	3	A6; B2	1
FSM-180803	1800	800	300	210	1691.2	697	1550	650	1.5	2	3	A3; A11	1
FSM-180804	1800	800	400	310	1691.2	697	1550	650	1.5	2	3	A7; B3	1
FSM-181004	1800	1000	400	310	1691.2	897	1550	850	1.5	2	3	A8; B4	1
FSM-281004	1800	1000	400	310	1691.2	897	1550	850	1.5	2	3	A8; B4	2
FSM-281204	1800	1200	400	310	1691.2	1097	1550	1050	1.5	2	3	2× A9; 2× B5	2
FSM-281604	1800	1600	400	310	1691.2	2× 697	1550	2× 650	1.5	2	3	2× A7; 2× B3	2
FSM-200603	2000	600	300	210	1891.2	497	1750	450	1.5	2	3	A2; A10	1
FSM-200604	2000	600	400	310	1891.2	497	1750	450	1.5	2	3	A6; B2	1
FSM-200803	2000	800	300	210	1891.2	697	1750	650	1.5	2	3	A3; A11	1
FSM-200804	2000	800	400	310	1891.2	697	1750	650	1.5	2	3	A7; B3	1
FSM-200805	2000	800	500	410	1891.2	697	1750	650	1.5	2	3	B3; C3	1
FSM-201004	2000	1000	400	310	1891.2	897	1750	850	1.5	2	3	A8; B4	1
FSM-301004	2000	1000	400	310	1891.2	897	1750	850	1.5	2	3	A8; B4	2
FSM-301005	2000	1000	500	410	1891.2	897	1750	850	1.5	2	3	B4; C4	2
FSM-301204	2000	1200	400	310	1891.2	1097	1750	1050	1.5	2	3	2× A9; 2× B5	2
FSM-301205	2000	1200	500	410	1891.2	1097	1750	1050	1.5	2	3	2× B5; 2× C5	2
FSM-301604	2000	1600	400	310	1891.2	2× 697	1750	2× 650	1.5	2	3	2× A7; 2× B3	2
FSM-301605	2000	1600	500	410	1891.2	2× 697	1750	2× 650	1.5	2	3	2× B3; 2× C3	2

* Internal dimensions: H—90 mm, W—90 mm, D—90 mm.

Cable gland plate for free-standing compact cabinets FSM



Type	Dimensions W × D (mm)	A	L	M
Cable gland plate type A				
A1	400 × 90	90	257	100
A2	600 × 90	90	457	300
A3	800 × 90	90	657	500
A4	1000 × 90	90	857	700
A5	1200 × 90	90	518	360
A6	600 × 120	120	457	300
A7	800 × 120	120	657	500
A8	1000 × 120	120	857	700
A9	1200 × 120	120	518	360
A10	600 × 130	130	457	300
A11	800 × 130	130	657	500
A12	1000 × 130	130	857	700
Cable gland plate type B				
B1	400 × 200	200	257	100
B2	600 × 200	200	457	300
B3	800 × 200	200	657	500
B4	1000 × 200	200	857	700
B5	1200 × 200	200	518	360
Cable gland plate type C				
C1	400 × 235	235	257	100
C2	600 × 235	235	457	300
C3	800 × 235	235	657	500
C4	1000 × 235	235	857	700
C5	1200 × 235	235	518	360

FSM—FREE-STANDING COMPACT CABINETS

HEAT LOSS DISPERSION

FSM—free-standing compact cabinets—
measured with heat inside cabinet $\Delta T = 15\text{ K}$

Code	Cabinet dimensions (mm)			Thickness of the material (mm)		Number of doors (pcs)	Total area of cabinet (m ²)	Total power dissipation (W)
	Height	Width	Depth	Body	Door			
FSM-140603	1400	600	300	1.5	2.00	1	2.880	152.6
FSM-140604	1400	600	400	1.5	2.00	1	3.280	169.2
FSM-160604	1600	600	400	1.5	2.00	1	3.680	190.5
FSM-160803	1600	800	300	1.5	2.00	1	4.000	216.6
FSM-160804	1600	800	400	1.5	2.00	1	4.480	236.4
FSM-161003	1600	1000	300	1.5	2.00	1	4.760	260.8
FSM-161004	1600	1000	400	1.5	2.00	1	5.280	282.3
FSM-261003	1600	1000	300	1.5	2.00	2	4.760	260.8
FSM-261204	1600	1200	400	1.5	2.00	2	6.080	328.2
FSM-180604	1800	600	400	1.5	2.00	1	4.080	211.8
FSM-180803	1800	800	300	1.5	2.00	1	4.440	241.2
FSM-180804	1800	800	400	1.5	2.00	1	4.960	262.6
FSM-181004	1800	1000	400	1.5	2.00	1	5.840	313.4
FSM-281004	1800	1000	400	1.5	2.00	2	5.840	313.4
FSM-281204	1800	1200	400	1.5	2.00	2	6.720	364.2
FSM-281604	1800	1600	400	1.5	2.00	2	8.480	465.8
FSM-200603	2000	600	300	1.5	2.00	1	3.960	211.7
FSM-200604	2000	600	400	1.5	2.00	1	4.480	233.2
FSM-200803	2000	800	300	1.5	2.00	1	4.880	265.8
FSM-200804	2000	800	400	1.5	2.00	1	5.440	288.9
FSM-200805	2000	800	500	1.5	2.00	1	6.000	312.0
FSM-201004	2000	1000	400	1.5	2.00	1	6.400	344.6
FSM-301004	2000	1000	400	1.5	2.00	2	6.400	344.6
FSM-301005	2000	1000	500	1.5	2.00	2	7.000	369.3
FSM-301204	2000	1200	400	1.5	2.00	2	7.360	400.3
FSM-301205	2000	1200	500	1.5	2.00	2	8.000	426.7
FSM-301604	2000	1600	400	1.5	2.00	2	9.280	511.7
FSM-301605	2000	1600	500	1.5	2.00	2	10.000	541.4

SAFETY WARNING SIGNS

DANGER: ELECTRIC SHOCK RISK



**DANGER:
ELECTRIC
SHOCK RISK**



**DANGER:
ELECTRIC
SHOCK RISK**

- Material: Oracal 640 self-adhesive foil, easily attachable to smooth surfaces
- Print: UV LED technology

Code	Height (mm)	Width (mm)	Package *
ID-OS-H1007	105	74	1 set
ID-OS-H0705	74	52	1 set
ID-OS-H0309	30	90	1 set

* 1 set—5 pcs.

DO NOT EXTINGUISH WITH WATER OR FOAM



**DO NOT
EXTINGUISH WITH
WATER OR FOAM**



**DO NOT
EXTINGUISH WITH
WATER OR FOAM**

- Material: Oracal 640 self-adhesive foil, easily attachable to smooth surfaces
- Print: UV LED technology

Code	Height (mm)	Width (mm)	Package *
ID-OS-F1007	105	74	1 set
ID-OS-F0705	74	52	1 set
ID-OS-F0309	30	90	1 set

* 1 set—5 pcs.

SWITCH OFF IN CASE OF EMERGENCY



**SWITCH OFF
IN CASE
OF EMERGENCY**



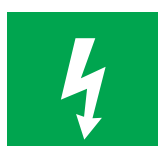
**SWITCH OFF
IN CASE
OF EMERGENCY**

- Material: Oracal 640 self-adhesive foil, easily attachable to smooth surfaces
- Print: UV LED technology

Code	Height (mm)	Width (mm)	Package *
ID-OS-G1007	105	74	1 set
ID-OS-G0705	74	52	1 set
ID-OS-G0309	30	90	1 set

* 1 set—5 pcs.

MAIN SWITCH



**MAIN
SWITCH**



**MAIN
SWITCH**

- Material: Oracal 640 self-adhesive foil, easily attachable to smooth surfaces
- Print: UV LED technology

Code	Height (mm)	Width (mm)	Package *
ID-OS-E1007	105	74	1 set
ID-OS-E0705	74	52	1 set
ID-OS-E0309	30	90	1 set

* 1 set—5 pcs.

MULTIPLE MESSAGES—DANGER ELECTRIC SHOCK RISK; DO NOT EXTINGUISH WITH WATER OR FOAM



**DANGER:
ELECTRIC
SHOCK RISK**



**DO NOT
EXTINGUISH WITH
WATER OR FOAM**

- Material: Oracal 640 self-adhesive foil, easily attachable to smooth surfaces
- Print: UV LED technology

Code	Height (mm)	Width (mm)	Package *
ID-OS-B0710	74	105	1 set

* 1 set—5 pcs.

MULTIPLE MESSAGES—MAIN SWITCH, SWITCH OFF IN CASE OF EMERGENCY



**MAIN
SWITCH**



**SWITCH OFF
IN CASE
OF EMERGENCY**

- Material: Oracal 640 self-adhesive foil, easily attachable to smooth surfaces
- Print: UV LED technology

Code	Height (mm)	Width (mm)	Package *
ID-OS-C0710	74	105	1 set

* 1 set—5 pcs.

MULTIPLE MESSAGES (4)



**DANGER:
ELECTRIC
SHOCK RISK**



**DO NOT
EXTINGUISH WITH
WATER OR FOAM**



**MAIN
SWITCH**



**SWITCH OFF
IN CASE
OF EMERGENCY**

- Material: Oracal 640 self-adhesive foil, easily attachable to smooth surfaces
- Print: UV LED technology

Code	Height (mm)	Width (mm)	Package *
ID-OS-D1410	148	105	1 set

ID-OS-D1007	105	74	1 set
-------------	-----	----	-------

* 1 set—5 pcs.

DANGER



- Material: Oracal 640 self-adhesive foil, easily attachable to smooth surfaces
- Print: UV LED technology

Code	Height (mm)	Width (mm)	Package *
ID-OS-A0809	80	90	1 set

ID-OS-A0606	60	67.5	1 set
-------------	----	------	-------

* 1 set—5 pcs.



Labelling cabinets, your logo and other sticker dimensions available on request.

CONTEG, spol. s r.o.

Stetkova 1638/18

140 00 Prague 4

Czech Republic

Tel.: +420 565 300 358

conteg@conteg.com

www.conteg.com

CONTEG