



**DATASHEET**  
Free-standing  
stainless steel  
compact cabinets  
FSM-X

**CONTEG**

# FSM-X—FREE-STANDING STAINLESS STEEL COMPACT CABINETS



FSM-X-201004

➤ **FSM-X free-standing compact cabinets** are made of stainless steel with side panels integrated in the frame. FSM-X cabinets are suitable for indoor and outdoor use and will withstand even the most demanding industrial environments, with an emphasis on a high level of cleanliness and resistance to the surrounding environment. The compact welded construction of the cabinet is made of profiled side panels joined together by crossbar profiles. This manufacturing method can meet the highest requirements for rigidity and lends the cabinet 700 kg of load-bearing capacity. Thanks to the design of the bottom frame, FSM-X can be used even without an extra plinth. To create a variety of mounting surfaces and planes, we offer a wide range of system accessories designed for optimal use of the frame profile. We also supply components to control the environment inside the cabinet, such as heating units, filtered fans or active cooling units.

## MAIN ADVANTAGES

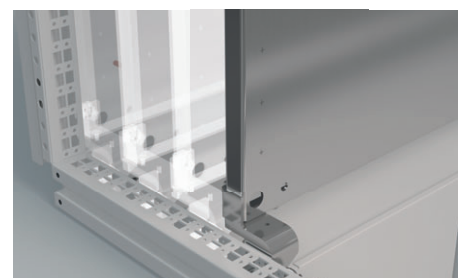
- Welded compact construction with integrated side panels—stainless steel
- Load capacity 700 kg
- Single-door cabinet designs
- Can be installed without an additional supporting plinth
- Designer lift-up handle—the standard for all cabinet types
- Easy to close doors thanks to a special locking system
- Maximum use of interior space—possibility of placing the mounting plate between the rear posts
- Side panels integrated in the frame
- 17 sizes from 1 400 × 600 × 300 mm up to 2 000 × 1 000 × 400 mm
- Wide assortment of accessories
- Wide assortment of tailor-made customer solutions—cut-outs according to your requirements before and after final surface finishing accessories



FSM-X-201004



Wide range of system rails creates additional mounting levels for individual installation.



Maximum use of interior space—possibility of placing the mounting plate between the rear uprights.

# FSM-X—FREE-STANDING STAINLESS STEEL COMPACT CABINETS

## STAINLESS STEEL

### DESCRIPTION

#### Material

- Cabinet: stainless steel 1.4301 (AISI 304), on request stainless steel 1.4404 (AISI 316L)
- Mounting plate: zinc-plated sheet steel

#### Cabinet surface finish

- Fine ground surface

#### Application

- Indoors and outdoors

#### Degree of protection

- IP55 according to the EN 60529 norm (the degree of protection can be reduced after mounting some accessories)

#### Mechanical durability

- IK10 according to IEC 62262

#### Supply includes

- Welded construction with integrated side panels
- Full single-door with swing handle is equipped with a four-point locking system

- The door hinges are located on the right-hand side of the single-door cabinet (option to switch the door mounting from right to left is available)
- Rear and top panel
- Gland plate
- Mounting plate with raster

FSM-X—FREE-STANDING STAINLESS STEEL COMPACT CABINETS, HEIGHT 1 400 AND 1 600 mm								
Cabinet	H (mm)	1400	1400	1600	1600	1600	1600	1600
	W (mm)	600	600	600	800	800	1000	1000
	D (mm)	300	400	400	300	400	300	400
Mounting plate	H1 (mm)	1291	1291	1491	1491	1491	1491	1491
	W2 (mm)	497	497	497	697	697	897	897
Material thickness (mm)	Rear and top panel	1.25 /1.5						
	Door	2	2	2	2	2	2	2
	Mounting plate	3	3	3	3	3	3	3
Door		1	1	1	1	1	1	1
Gland plate, number of parts		2	2	2	2	2	2	2
Weight (kg)		75	81	82	104	109	120	132
Code	1 pc	FSM-X-140603	FSM-X-140604	FSM-X-160604	FSM-X-160803	FSM-X-160804	FSM-X-161003	FSM-X-161004
ACCESSORIES								
Plinth 100 mm	front and rear	1 set	ID-F-XPFO6	ID-F-XPFO6	ID-F-XPFO6	ID-F-XPFO8	ID-F-XPFO8	ID-F-XPFO10
	side parts		ID-F-XPS03	ID-F-XPS04	ID-F-XPS04	ID-F-XPS03	ID-F-XPS04	ID-F-XPS03

To order the cabinet without the mounting plate, use order number FSM-X-xxxxxx-01.

FSM-X—FREE-STANDING STAINLESS STEEL COMPACT CABINETS, HEIGHT 1 800 mm								
Cabinet	H (mm)	1800	1800	1800	1800	1800	1800	1800
	W (mm)	600	800	800	800	1000	1000	1000
	D (mm)	400	300	400	400	400	400	400
Mounting plate	H1 (mm)	1691	1691	1691	1691	1691	1691	1691
	W2 (mm)	497	697	697	697	697	897	897
Material thickness (mm)	Rear and top panel	1.25 /1.5						
	Door	2	2	2	2	2	2	2
	Mounting plate	3	3	3	3	3	3	3
Door		1	1	1	1	1	1	1
Gland plate, number of parts		2	2	2	2	2	2	2
Weight (kg)		99	104	104	109	109	146	146
Code	1 pc	FSM-X-180604	FSM-X-180803	FSM-X-180804	FSM-X-180804	FSM-X-181004	FSM-X-181004	FSM-X-181004
ACCESSORIES								
Plinth 100 mm	front and rear	1 set	ID-F-XPFO6	ID-F-XPFO8	ID-F-XPFO8	ID-F-XPFO8	ID-F-XPFO10	ID-F-XPFO10
	side parts		ID-F-XPS04	ID-F-XPS03	ID-F-XPS04	ID-F-XPS04	ID-F-XPS04	ID-F-XPS04

To order the cabinet without the mounting plate, use order number FSM-X-xxxxxx-01.

**FSM-X—FREE-STANDING STAINLESS STEEL COMPACT CABINETS, HEIGHT 2 000 mm**

Cabinet	H (mm)	2 000	2 000	2 000	2 000	2 000	2 000	
	W (mm)	600	600	800	800	800	1 000	
	D (mm)	300	400	300	400	500	400	
Mounting plate	H1 (mm)	1 891	1 891	1 891	1 891	1 891	1 891	
	W2 (mm)	497	497	697	697	697	897	
Material thickness (mm)	Rear and top panel	1.2/1.5						
	Door	2	2	2	2	2	2	
	Mounting plate	3	3	3	3	3	3	
Door		1	1	1	1	1	1	
Gland plate, number of parts		2	2	2	2	2	2	
Weight (kg)		102	107	124	132	138	159	
Code	1 pc	<b>FSM-X-200603</b>	<b>FSM-X-200604</b>	<b>FSM-X-200803</b>	<b>FSM-X-200804</b>	<b>FSM-X-200805</b>	<b>FSM-X-201004</b>	
<b>ACCESSORIES</b>								
Plinth 100 mm	front and rear	1 set	ID-F-XPFO6	ID-F-XPFO6	ID-F-XPFO8	ID-F-XPFO8	ID-F-XPFO8	ID-F-XPFO10
	side parts		ID-F-XPS03	ID-F-XPS04	ID-F-XPS03	ID-F-XPS04	ID-F-XPS05	ID-F-XPS04

To order the cabinet without the mounting plate, use order number FSM-X-xxxxxx-01.

## Recommended Accessories



Cooling units



Filter fans



Horizontal and vertical extrusions

# ACCESSORIES

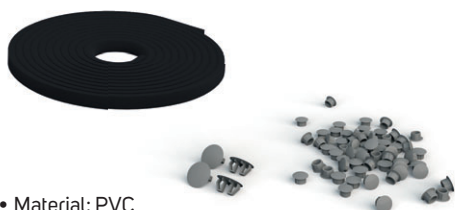
## PLINTHS



- Material: 2mm stainless steel
- Surface finish: fine ground surface
- It is necessary to order front and side set together
- Possibility of installing two plinths of 100 mm height apart
- Supply includes: mounting accessories

Code for 100 mm high plinth	For cabinet width (mm)	Package
<b>Plinth—front and rear set</b>		
ID-F-XPF06	600	1 set
ID-F-XPF08	800	1 set
ID-F-XPF10	1000	1 set
<b>Plinth—sides set</b>		
ID-F-XPS03	300	1 set
ID-F-XPS04	400	1 set
ID-F-XPS05	500	1 set

## SEALING SET IP55



- Material: PVC
- Application: plugs and sealing tape for IP55 protection
- Supply includes: whole set for an FSM cabinet

Code	Package
ID-F-KIT55	1 pc

## SPARE MOUNTING PLATE



- Material: 3mm zinc-plated sheet steel
- Supply includes: mounting plate with marked raster, mounting accessories and brackets

Code	For cabinet height × width (mm)
ID-F-SP1806	1800 × 600
ID-F-SP1808	1800 × 800
ID-F-SP1810	1800 × 1000
ID-F-SP2006	2000 × 600
ID-F-SP2008	2000 × 800
ID-F-SP2010	2000 × 1000

## LOWER BRACKETS FOR MOUNTING PLATES



- Material: 5 mm zinc-plated sheet steel
- Application: to allow the mounting plate to be moved out of the rear position of the frame
- Mounting: mount on the lower side of the frame profile
- Supply includes: mounting accessories

Code	Package
ID-F-SBR	1 pc

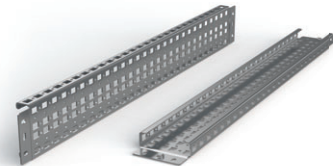
## SIDE BRACKETS FOR MOUNTING PLATES



- Material: 2mm zinc-plated sheet
- Application: for additional mounting plate fixation and vibration reduction
- Mounting: mount on horizontal ID-F-Hxx or ID-F-NHxx rails or directly on the upright
- Supply includes: mounting accessories

Code	Package
ID-F-LBP	1 set

## HORIZONTAL/VERTICAL EXTRUSIONS



ID-F-H (for mounting on the sides of the frame profiles)



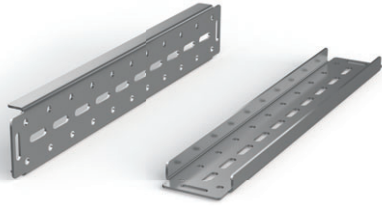
ID-F-NH (for mounting between the frame profiles)

- Material: 2mm zinc-plated sheet steel
- Rail width: 90 mm (ID-F-H), 41.2 mm (ID-F-NH)
- Application: to create more mounting planes (horizontal and vertical)
- Mounting: ID-F-Hx on the sides of the frame profiles
- Mounting: ID-F-NHx between the frame profiles
- Supply includes: mounting accessories

Code	For cabinet height/width/depth (mm)	Load capacity in horizontal position	Load capacity in vertical position	Package *
<b>Mounting on the sides of the frame profiles</b>				
ID-F-H4	400	140 kg	240 kg	1 set
ID-F-H5	500	100 kg	240 kg	1 set
ID-F-H6	600	70 kg	240 kg	1 set
ID-F-H8	800	50 kg	180 kg	1 set
ID-F-H10	1000	50 kg	140 kg	1 set
ID-F-H12	1200	50 kg	120 kg	1 set
ID-F-H18	1800	36 kg	80 kg	1 set
ID-F-H20	2000	32 kg	70 kg	1 set
<b>Mounting between the frame profiles</b>				
ID-F-NH4	400	95 kg	95 kg	1 set
ID-F-NH5	500	85 kg	85 kg	1 set
ID-F-NH6	600	70 kg	70 kg	1 set
ID-F-NH8	800	56 kg	56 kg	1 set
ID-F-NH10	1000	45 kg	45 kg	1 set
ID-F-NH12	1200	35 kg	35 kg	1 set
ID-F-NH18	1800	21 kg	21 kg	1 set
ID-F-NH20	2000	20 kg	20 kg	1 set

\* 1 set—2 pcs.

## HORIZONTAL EXTRUSIONS



- Material: 3mm zinc-plated sheet steel
- Rail width: 87.5 mm
- Application: for installing high weight components
- Mounting: mount on frame profiles
- Supply includes: mounting accessories

Code	For cabinet width/depth (mm)	Load capacity in horizontal position	Package *
ID-F-HH4	400	260 kg	1 set
ID-F-HH5	500	210 kg	1 set
ID-F-HH6	600	175 kg	1 set
ID-F-HH8	800	130 kg	1 set
ID-F-HH10	1000	100 kg	1 set

\* 1 set—2 pcs.

## DOOR-MOUNTING RAILS



- Material: 2mm zinc-plated sheet steel
- Rail width: 20 mm
- Application: for creating more mounting planes on the inner sides of the doors
- Mounting: into the door frame
- Supply includes: mounting accessories

Code	For door/wing dimensions (mm)	Package *
ID-F-VD6	600	1 set
ID-F-VD8	800	1 set
ID-F-VD10	1000	1 set

\* 1 set—2 pcs.

## PROFILE FOR CABLE FIXING

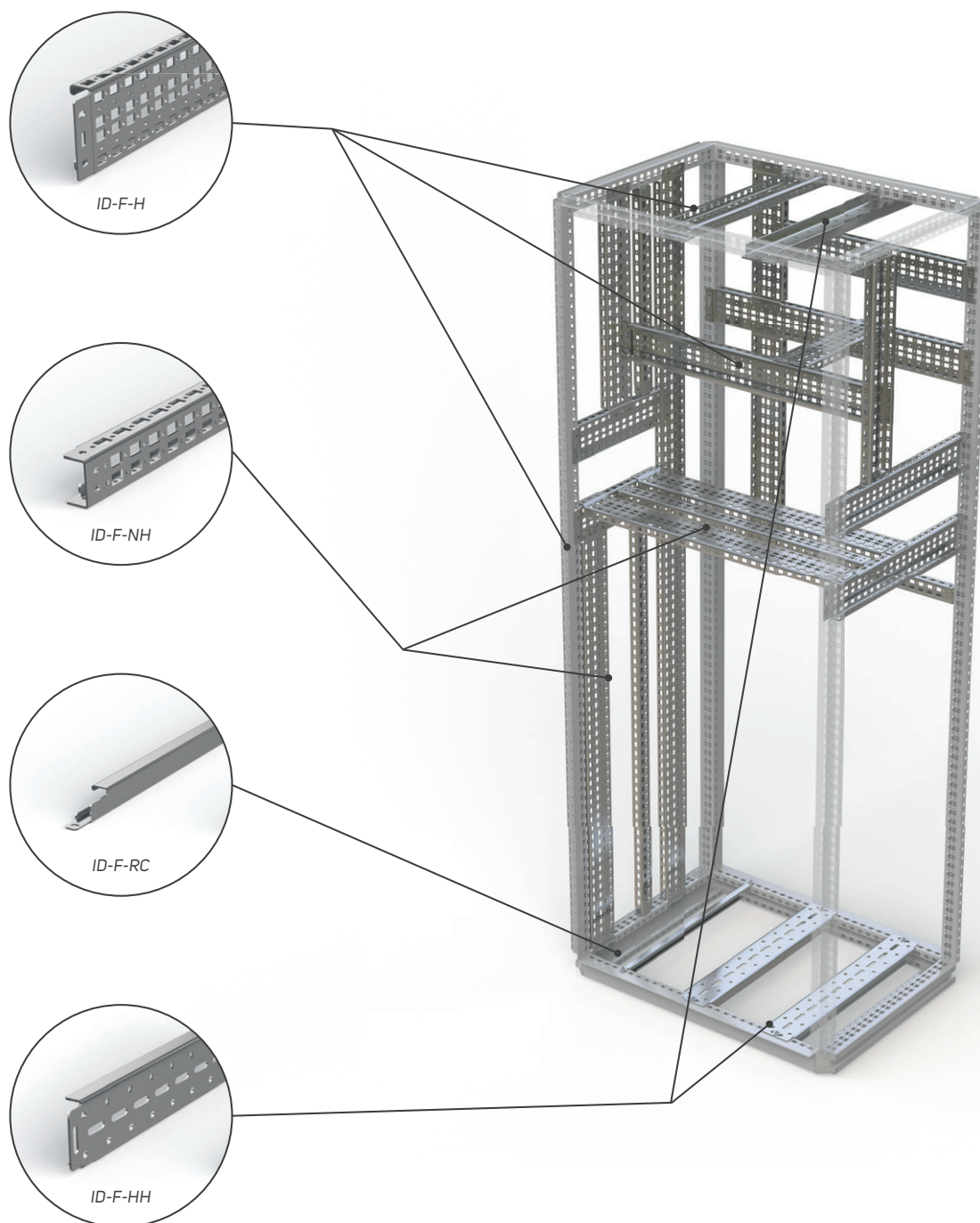


- Material: 2mm zinc-plated sheet steel
- Application: for cable glands
- Mounting: mount on the lower side profile of the frame or on the mounting plate (ID-F-RCUxx)
- Mounting: mount between the bottom side frame profiles (ID-F-RCxx)
- Supply includes: mounting accessories

Code	Code	For cabinet width/depth (mm)	Package *
ID-F-RC4	ID-F-RCU4	400	1 set
ID-F-RC6	ID-F-RCU6	600	1 set
ID-F-RC8	ID-F-RCU8	800	1 set
ID-F-RC10	ID-F-RCU10	1000	1 set

\* 1 set—2 pcs.

## Possibilities to install horizontal and vertical rails



## EYE BOLTS



- Eye bolts for crane transport
- Application: for assembling with FSM, holes with internal threads under roof
- Material: zinc-plated carbon steel
- DIN580
- M12
- Package includes: 4 pcs

Code	Package
ID-F-EB	1set



## 19" RAILS



- Material: 2mm zinc-plated sheet steel
- Application: to make 19" planes in the FSM cabinets
- Mounting: onto the ID-F-UBxx + ID-F-Hxx brackets
- Supply includes: 19" vertical extrusions and mounting accessories

Code *	For cabinet height × width (mm)	Package
ID-F-V186	1 800 × 600 (36U)	1 set
ID-F-V206	2 000 × 600 (42U)	1 set
ID-F-V188	1 800 × 800 (36U)	1 set
ID-F-V208	2 000 × 800 (42U)	1 set

\* It's necessary to order 19" brackets ID-F-UBxx.

## 19" BRACKETS



ID-F-UB08

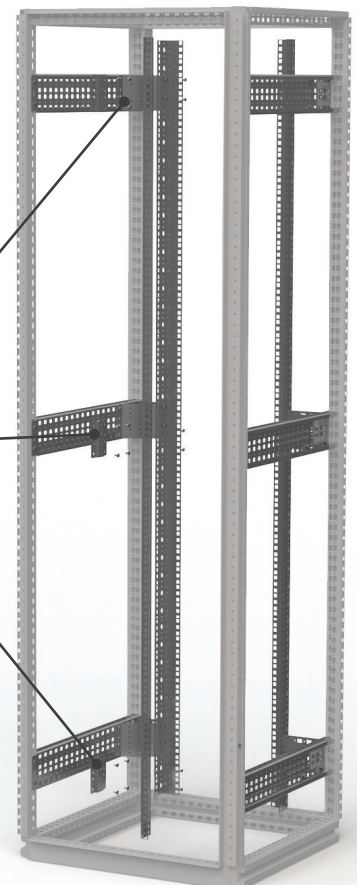
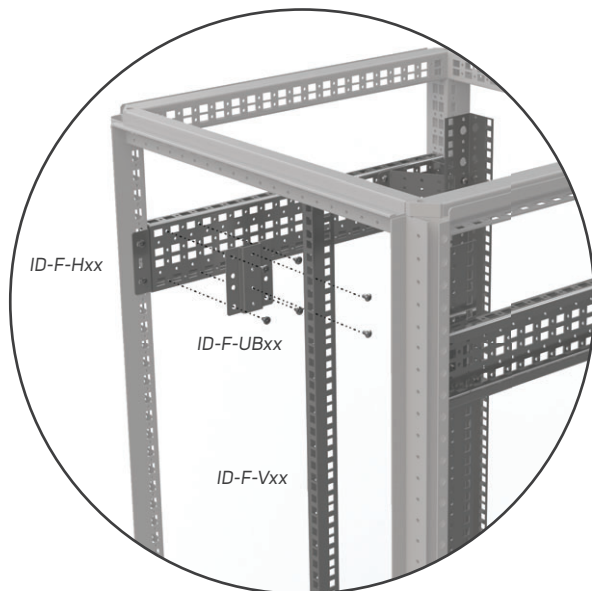
ID-F-UB06

- Material: 1.5mm (ID-F-UB06); 2mm (ID-F-UB08) zinc-plated sheet steel
- Application: to make 19" planes in the FSM cabinets of width 600 and 800 mm
- Mounting: onto system extrusions ID-F-Hxx
- Supply includes: brackets for 19" vertical extrusions and mounting accessories

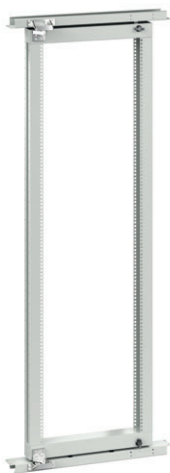
Code	For cabinet width (mm)	Package *
ID-F-UB06	600	1 set
ID-F-UB08	800	1 set

\* 1 set—6 pcs.

## Mounting 19" extrusion



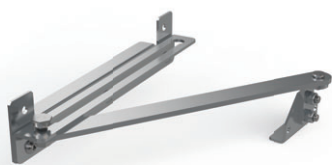
## 19" SWING FRAME



- Material: 2mm sheet steel
- Swing frame load-bearing capacity: 150 kg
- Use: to create a swinging 19" plane and an access point to the back of the rack cabinet with width of 800 mm
- Installation: onto the cabinet structure
- Supply includes: 19" swing frame including a lock and horizontal crossbars for mounting

Code	For cabinet height × width (mm)	Package
ID-F-1808-SF15	1800 × 800	1 set
ID-F-2008-SF15	2000 × 800	1 set

## DOOR STOP



- Application: for FSM cabinets
- Supply includes: door stop and mounting accessories

Code	Package
ID-F-DS	1 pc

## DOOR SWITCH



- Brackets material: 2mm zinc-plated sheet steel
- Door switch: IP65, plastic, 1NO + 1NC, PG13.5, -25 °C to +70 °C
- Supply includes: door switch and mounting accessories

Code	Package
ID-F-DC	1 pc

## UTILITY LECTERN



- Material: 1.5mm sheet steel
- Color: RAL 7035
- Mounting: mount onto the door frame
- Dimensions: depth 356 mm, width—suitable for the specific cabinet dimensions
- Supply includes: mounting accessories

Code	For cabinet width (mm)	Package
ID-F-CDD6	600	1 set
ID-F-CDD8	800	1 set
ID-F-CDD10	1000	1 set

## PARTIAL MOUNTING PLATE



- Material: 3mm zinc-plated sheet steel
- Application: to create additional front and side mounting planes, the plates are versatile and can be mounted horizontally to the appropriate cabinet width or vertically to the appropriate cabinet depth
- Mounting: mount horizontally or vertically on the frame profiles or system rails
- Supply includes: mounting accessories

Code	For cabinet width (mm)	For cabinet depth (mm)	Mounting plane height (mm)
ID-F-PMP0604	600	–	400
ID-F-PMP0604	–	400	600
ID-F-PMP0605	600	–	500
ID-F-PMP0605	–	500	600
ID-F-PMP0804	800	–	400
ID-F-PMP0804	–	400	800
ID-F-PMP0806	800	–	600
ID-F-PMP0806	–	600	800
ID-F-PMP1004	1000	–	400
ID-F-PMP1004	–	400	1000
ID-F-PMP1204	–	400	1200

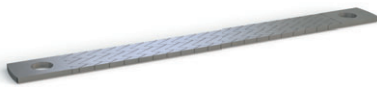
## LOCKS/LOCK INSERTS



- Application: spare inserts instead of the standard 5 mm double-bar
- Supply includes: mounting accessories

Code	Type	Package
ID-F-INLK1	Lock for inTEG FSE, key 5333	1 set
ID-F-INLK3	Lock for inTEG FSE, unique key	1 set
ID-F-INS7	Lock insert 7 mm SQUARE, black zamak	1 set
ID-F-INS8	Lock insert 8 mm SQUARE, black zamak	1 set
ID-F-INT7	Lock insert 7 mm TRIANGULAR, black zamak	1 set
ID-F-INT8	Lock insert 8 mm TRIANGULAR, black zamak	1 set
ID-F-INLKE1	Lockable VW 1 cap	1 set
ID-F-INSS	Complete handle	1 set
ID-F-INSSA	Door plate double-bar 5 mm	1 set

## EARTHING



- Material: tinned copper
- Supply includes: various lengths and cross-sections of flat conductors with pressed contact holes with an M8 opening

Code	Type	Package
ID-F-EK1	Flat earthing conductor for M8, length 200 mm, cross-section 16 mm <sup>2</sup>	10 pcs
ID-F-EK2	Flat earthing conductor for M8, length 200 mm, cross-section 25 mm <sup>2</sup>	10 pcs
ID-F-EK3	Flat earthing conductor for M8, length 300 mm, cross-section 16 mm <sup>2</sup>	10 pcs
ID-F-EK4	Flat earthing conductor for M8, length 300 mm, cross-section 25 mm <sup>2</sup>	10 pcs

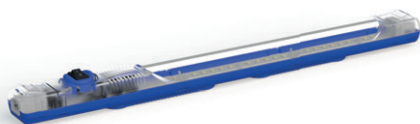
## FASTENERS



- Supply includes: M6x16 ISO 7380 Zn (ID-W-SMS6x16) cage nuts, screws, hinge, pull-out brackets and fasteners for FSM (ID-F-CK)

Code	Description	Package
ID-W-CNM6	Cage nut M6	10 pcs
ID-W-SMS6x16	Screw M6x16, ISO 7380, Zn	10 pcs
ID-W-CNM8	Cage nut M8	10 pcs
ID-W-SMS8x16	Screw M8x16, ISO 7380, Zn	10 pcs
ID-F-CK	Hinge, pull-out brackets, replacement fasteners for FSM	1 set

## LED LIGHT



- Material: PC, transparent and ABS
- Application: to light up the interior of the cabinet, option of connecting several light fixtures
- Mounting: mount onto the frame profiles or by magnets
- Dimensions: 357.4 × 32 × 31.6 mm
- Degree of protection: IP20
- Supply includes: complete lighting unit with rocker switch, inter-connection cables

Code	Type	Package
ID-F-L	Lighting unit LED 4 W, 24-265 V (DC/AC), 0/50/60 Hz	1 pc

## POCKETS FOR DOCUMENTS



- Material: ABS
- Color: RAL 7035
- Dimensions: 234 × 241 × 31 mm (H × W × D)
- Mounting: with a self-adhesive tape
- Supply includes: pocket for documents and self-adhesive tape

Code	Package
ID-PO-A4	1 pc



- Material: 1mm sheet steel
- Color: RAL 7035
- Mounting: onto the door frame
- Supply includes: pocket for documents and mounting accessories

Code	For door/wing dimensions (mm)	Package
ID-F-MP06	600	1 set
ID-F-MP08	800	1 set
ID-F-MP10	1000	1 set

# FILTER FANS



## MAIN ADVANTAGES

- Quick assembly without screws and tools into a square cut-out, easy to mount with highly elastic clips
- Easy filter insert replacement from the outside without tools
- Possible to change airflow direction
- Airflow up to 800 m<sup>3</sup>/h
- Can be mounted in a cabinet with a sheet thickness of 1-2.5 mm
- IP 54 standard degree of protection
- Side and top ventilator placement
- Operating temperature range -10 °C up to +70 °C
- Polyurethane foam sealing around the whole perimeter
- Resistance against UV radiation
- Holes for installation in the CONTEG Modification Center

## DESCRIPTION

- Plastic parts made of ABS/PC mix, all parts are self-extinguishing according to UL 94V-0
- Standard color RAL 7035 (different color on request)
- Filter inserts made of synthetic fibres of class G3 according to EN

779 and class G4 according to EN 779 and UL 900 class 2 self-extinguishing in class F1 according to DIN 53 438

- Filter inserts are cleaned by washing, compressed air and banging

- Encapsulated fan ball bearings
- IP54 standard degree of protection EN 60529 and NEMA 12 according to UL 50
- IP55 settable (according to EN 60529)

- IP56 when using protective cover against splashing water
- EMC version available on request

## Fans

Code	Airflow	Dimensions H × W × D	Voltage **	Frequency	Outlet filter grid	Cut-out dimensions	Degree of protection
ID-EF-01-4	12/15 m <sup>3</sup> /h	106.5 × 106.5 × 59.9 mm	230 VAC	50/60 Hz	ID-EF-01	92 × 92 mm	IP54
ID-EF-01-1	15 m <sup>3</sup> /h	106.5 × 106.5 × 59.9 mm	24 VDC	–	ID-EF-01	92 × 92 mm	IP54
ID-EF-04-4	45/50 m <sup>3</sup> /h	150 × 150 × 65.5 mm	230 VAC	50/60 Hz	ID-EF-03	125 × 125 mm	IP54
ID-EF-04-1	47 m <sup>3</sup> /h	150 × 150 × 65.5 mm	24 VDC	–	ID-EF-03	125 × 125 mm	IP54
ID-EF-10-4	100/110 m <sup>3</sup> /h	203.9 × 203.9 × 87.5 mm	230 VAC	50/60 Hz	ID-EF-05	177 × 177 mm	IP54
ID-EF-10-1	100 m <sup>3</sup> /h	203.9 × 203.9 × 87.5 mm	24 VDC	–	ID-EF-05	177 × 177 mm	IP54
ID-EF-23-4	230/270 m <sup>3</sup> /h	250 × 250 × 115.3 mm	230 VAC	50/60 Hz	ID-EF-07	223 × 223 mm	IP54
ID-EF-22-1	225 m <sup>3</sup> /h	250 × 250 × 115.3 mm	24 VDC	–	ID-EF-07	223 × 223 mm	IP54
ID-EF-52-4	520/580 m <sup>3</sup> /h	325 × 325 × 150.7 mm	230 VAC	50/60 Hz	ID-EF-09	291 × 291 mm	IP54
ID-EF-71-4	710/800 m <sup>3</sup> /h	325 × 325 × 149 mm	230 VAC	50/60 Hz	ID-EF-09	291 × 291 mm	IP54
ID-EFT-42-4 *	420/490 m <sup>3</sup> /h	324 × 324 × 94 mm	230 VAC	50/60 Hz	ID-EF-09	fan 175 × 175 mm/grid 291 × 291 mm	IP54
ID-EO-TC	Thermostat for cooling	55 × 33 × 43 mm	250 VAC/10 A	–	–	–	IP20

\* Top version.

\*\* Other input voltage options available upon request.



For more detailed information, please refer to the product catalog "Climate control solutions" at [www.conteg.com](http://www.conteg.com) or contact our sales representatives.

# COOLING UNITS



## MAIN ADVANTAGES

- Cooling capacity from 320 W up to 4 000 W
- Easy maintenance—units don't require filter inserts
- Higher cooling capacity and reliability thanks to highly efficient condenser made of aluminum
- Units are environmentally friendly—cooling medium R134a
- Robust stainless steel cases
- Simple regulation and monitoring
- Easy and fast mounting (side and top version)
- High-quality components ensure long service life and reliability (such as the Mitsubishi Electric rotary piston compressor)
- Transport units in any position
- World-recognized certifications (UL, CUL, CE)
- Holes for installation in the CONTEG Modification Center

## DESCRIPTION

<p><b>Material</b></p> <ul style="list-style-type: none"> <li>• Stainless steel</li> </ul> <p><b>Color</b></p> <ul style="list-style-type: none"> <li>• RAL 7035</li> </ul>	<p><b>Cooling medium</b></p> <ul style="list-style-type: none"> <li>• R134a</li> </ul> <p><b>Degree of protection</b></p> <ul style="list-style-type: none"> <li>• Outer circle IP54</li> <li>• Inner circle IP24</li> </ul>	<p><b>Mounting type</b></p> <ul style="list-style-type: none"> <li>• External</li> <li>• Fully recessed</li> </ul> <p><b>Certification</b></p> <ul style="list-style-type: none"> <li>• CE, cURus</li> </ul>	<p><b>Supply includes:</b></p> <ul style="list-style-type: none"> <li>• Unit prepared for connection and immediate use</li> </ul>
---	--	--	---

## Cooling units SLIM (wall-mounted or fully recessed mounting)

Code	Cooling capacity	Dimensions H × W × D	Voltage *	Frequency	Version	Cut-out dimensions	Degree of protection
AC-WM3-03-4200	320 W	520 × 270 × 110 mm	230 VAC	50/60 Hz	Stainless steel	501 × 251 mm	IP54/IP24
AC-WM3-04-4200	400 W	520 × 320 × 110 mm	230 VAC	50/60 Hz	Stainless steel	504 × 308 mm	IP54/IP24
AC-WM3-04-420H	400 W	340 × 520 × 110 mm	230 VAC	50/60 Hz	Stainless steel	321 × 501 mm	IP54/IP24
AC-WM3-05-4200	500 W	600 × 320 × 110 mm	230 VAC	50/60 Hz	Stainless steel	581 × 301 mm	IP54/IP24
AC-WM3-08-4200	820 W	980 × 395 × 145 mm	230 VAC	50/60 Hz	Stainless steel	954 × 376 mm	IP54/IP24
AC-WM3-08-6200	820 W	980 × 395 × 145 mm	400 VAC	50/60 Hz	Stainless steel	954 × 376 mm	IP54/IP24
AC-WM3-11-4200	1100 W	1 250 × 395 × 145 mm	230 VAC	50/60 Hz	Stainless steel	1 214 × 376 mm	IP54/IP24
AC-WM3-11-6200	1100 W	1 250 × 395 × 145 mm	400 VAC	50/60 Hz	Stainless steel	1 214 × 376 mm	IP54/IP24
AC-WM3-15-4200	1500 W	1 550 × 395 × 145 mm	230 VAC	50/60 Hz	Stainless steel	1 531 × 376 mm	IP54/IP24
AC-WM3-15-6200	1500 W	1 550 × 395 × 145 mm	400 VAC	50/60 Hz	Stainless steel	1 531 × 376 mm	IP54/IP24

\* Other input voltage options available upon request.

## Cooling units COMPACT (wall-mounted)

Code	Cooling capacity	Dimensions H × W × D	Voltage *	Frequency	Material	Cut-out dimensions	Degree of protection
AC-WM4-03-4200	320/360 W	500 × 280 × 200 mm	230 VAC	50/60 Hz	Stainless steel	480 × 240 mm	IP54/IP24
AC-WM4-05-4200	550/620 W	650 × 315 × 260 mm	230 VAC	50/60 Hz	Stainless steel	635 × 275 mm	IP54/IP24
AC-WM4-05-6200	550/620 W	650 × 315 × 260 mm	400 VAC	50/60 Hz	Stainless steel	635 × 275 mm	IP54/IP24
AC-WM4-08-4200	750/780 W	650 × 315 × 260 mm	230 VAC	50/60 Hz	Stainless steel	635 × 275 mm	IP54/IP24
AC-WM4-08-6200	750 W	650 × 315 × 260 mm	400 VAC	50/60 Hz	Stainless steel	635 × 275 mm	IP54/IP24
AC-WM4-10-4200	1000/1080 W	650 × 315 × 260 mm	230 VAC	50/60 Hz	Stainless steel	635 × 275 mm	IP54/IP24
AC-WM4-10-6200	1 000 W	650 × 315 × 260 mm	400 VAC	50/60 Hz	Stainless steel	635 × 275 mm	IP54/IP24
AC-WM4-15-4200	1500/1630 W	980 × 395 × 260 mm	230 VAC	50/60 Hz	Stainless steel	920 × 335 mm	IP54/IP24
AC-WM4-15-6200	1500 W	980 × 395 × 260 mm	400 VAC	50/60 Hz	Stainless steel	920 × 335 mm	IP54/IP24
AC-WM4-20-4200	2 000 W	980 × 395 × 260 mm	230 VAC	50/60 Hz	Stainless steel	920 × 335 mm	IP54/IP24
AC-WM4-20-6200	2 000 W	980 × 395 × 260 mm	400 VAC	50/60 Hz	Stainless steel	920 × 335 mm	IP54/IP24
AC-WM4-25-4200	2 500 W	1230 × 500 × 340 mm	230 VAC	50/60 Hz	Stainless steel	1130 × 430 mm	IP54/IP24
AC-WM4-25-6200	2 500 W	1230 × 500 × 340 mm	400 VAC	50/60 Hz	Stainless steel	1130 × 430 mm	IP54/IP24
AC-WM4-30-4200	3 000 W	1230 × 500 × 340 mm	230 VAC	50/60 Hz	Stainless steel	1130 × 430 mm	IP54/IP24
AC-WM4-30-6200	3 000 W	1230 × 500 × 340 mm	400 VAC	50/60 Hz	Stainless steel	1130 × 430 mm	IP54/IP24
AC-WM4-40-4200	4 000 W	1230 × 500 × 340 mm	230 VAC	50/60 Hz	Stainless steel	1130 × 430 mm	IP54/IP24
AC-WM4-40-6200	4 000 W	1230 × 500 × 340 mm	400 VAC	50/60 Hz	Stainless steel	1130 × 430 mm	IP54/IP24

\* Other input voltage options available upon request.

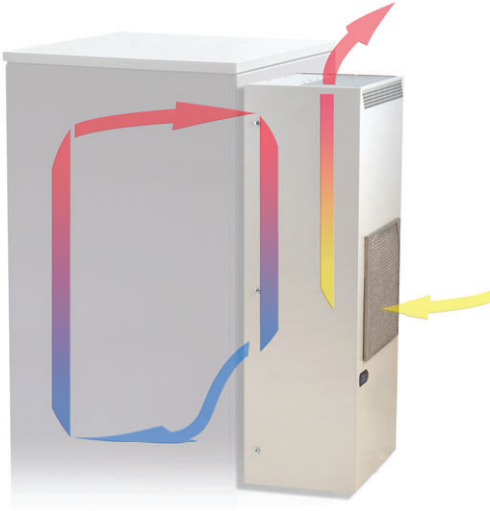
## Cooling units TOP (top mounting)

Code	Cooling capacity	Dimensions H × W × D	Voltage *	Frequency	Material	Cut-out dimensions	Degree of protection
AC-TM3-04-4200	450/460 W	230 × 430 × 330 mm	230 VAC	50/60 Hz	Stainless steel	142 × 98 mm/142 × 147,5 mm	IP54/IP24
AC-TM3-11-4200	1100/1150 W	400 × 600 × 400 mm	230 VAC	50/60 Hz	Stainless steel	108 × 530 mm (×2)	IP54/IP24
AC-TM3-11-6200	1100/1150 W	400 × 600 × 400 mm	400 VAC	50/60 Hz	Stainless steel	108 × 530 mm (×2)	IP54/IP24
AC-TM3-15-4200	1500 W	410 × 600 × 400 mm	230 VAC	50/60 Hz	Stainless steel	363 × 236.4 mm (×2)	IP54/IP24
AC-TM3-15-6200	1500 W	410 × 600 × 400 mm	400 VAC	50/60 Hz	Stainless steel	363 × 236.4 mm (×2)	IP54/IP24
AC-TM3-20-6200	2 000 W	410 × 600 × 400 mm	400 VAC	50/60 Hz	Stainless steel	363 × 236.4 mm (×2)	IP54/IP24

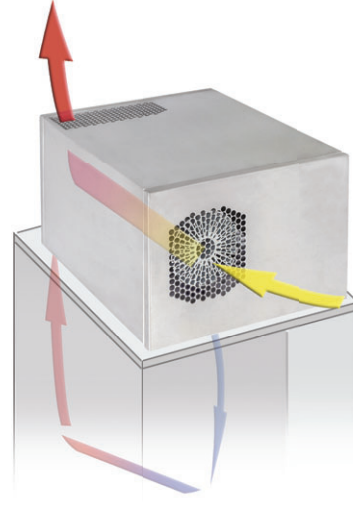
\* Other input voltage options available upon request.

# AIR FLOW

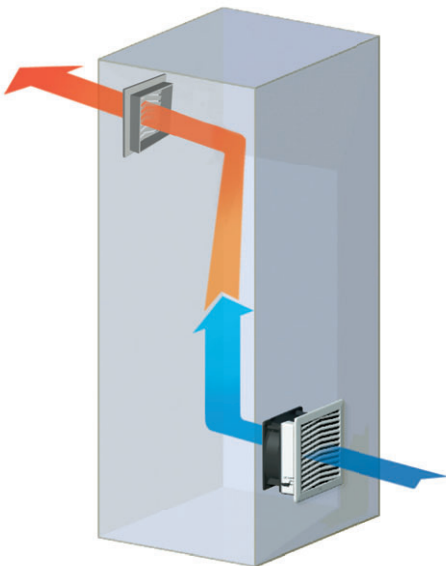
Cooling units—wall-mounted



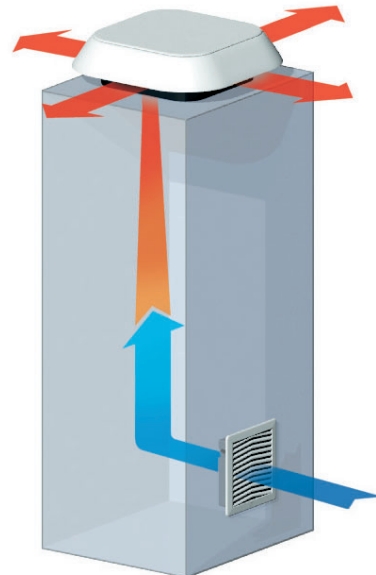
Cooling units—top



Fans—wall-mounted



Fans—top

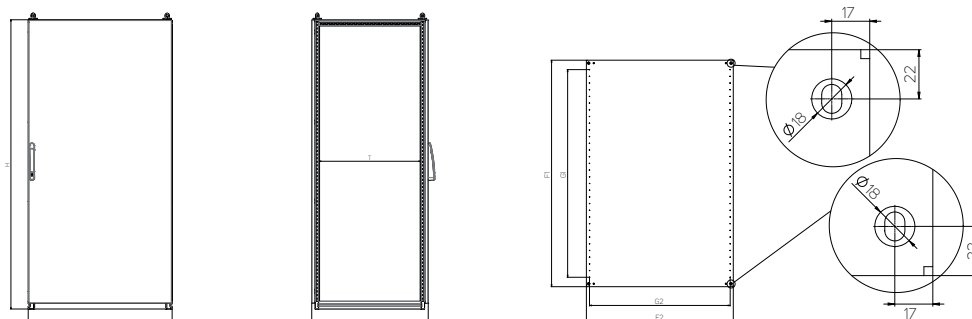




# FSM-X—FREE-STANDING STAINLESS STEEL COMPACT CABINETS

## TECHNICAL DRAWINGS

FSM-X—free-standing compact cabinets—stainless steel



Code	Height (mm)	Width (mm)	Depth (mm)		Mounting plate (mm)				Material thickness (mm)			# of doors
	H *	W *	D *	T	F1	F2	G1	G2	Cabinet	Door	Mounting plate	
FSM-X-140603	1400	600	300	210	1291.2	497	1150	450	1.5	2	3	1
FSM-X-140604	1400	600	400	310	1291.2	497	1150	450	1.5	2	3	1
FSM-X-160604	1600	600	400	310	1491.2	497	1350	450	1.5	2	3	1
FSM-X-160803	1600	800	300	210	1491.2	697	1350	650	1.5	2	3	1
FSM-X-160804	1600	800	400	310	1491.2	697	1350	650	1.5	2	3	1
FSM-X-161003	1600	1000	300	210	1491.2	897	1350	850	1.5	2	3	1
FSM-X-161004	1600	1000	400	310	1491.2	897	1350	850	1.5	2	3	1
FSM-X-180604	1800	600	400	310	1691.2	497	1550	450	1.5	2	3	1
FSM-X-180803	1800	800	300	210	1691.2	697	1550	650	1.5	2	3	1
FSM-X-180804	1800	800	400	310	1691.2	697	1550	650	1.5	2	3	1
FSM-X-181004	1800	1000	400	310	1691.2	897	1550	850	1.5	2	3	1
FSM-X-200603	2000	600	300	210	1891.2	497	1750	450	1.5	2	3	1
FSM-X-200604	2000	600	400	310	1891.2	497	1750	450	1.5	2	3	1
FSM-X-200803	2000	800	300	210	1891.2	697	1750	650	1.5	2	3	1
FSM-X-200804	2000	800	400	310	1891.2	697	1750	650	1.5	2	3	1
FSM-X-200805	2000	800	500	410	1891.2	697	1750	650	1.5	2	3	1
FSM-X-201004	2000	1000	400	310	1891.2	897	1750	850	1.5	2	3	1

\* Internal dimensions: H—90 mm, W—90 mm, D—90 mm.

**CONTEG, spol. s r.o.**

Stetkova 1638/18

140 00 Prague 4

Czech Republic

Tel.: +420 565 300 358

[conteg@conteg.com](mailto:conteg@conteg.com)

[www.conteg.com](http://www.conteg.com)

**CONTEG**