



DATASHEET
Free-standing
enclosures
FSE

CONTEG

FSE—

FREE-STANDING CABINETS



FSE-200804



➤ **FSE free-standing sheet steel cabinets** are suitable for being together and will withstand even the most demanding industrial environments. The FSE is a welded cabinet and its frame is made of a special cold-rolled profile. This technological process combined with the patented shape of the profile meets the highest rigidity and load requirements. This cabinet can be used without any additional plinth thanks to the design of the bottom frame; this solution maximizes space for installation of components inside the cabinet. To create a variety of mounting surfaces and planes, we offer a wide range of system accessories designed for optimal use of the frame profile.

MAIN ADVANTAGES

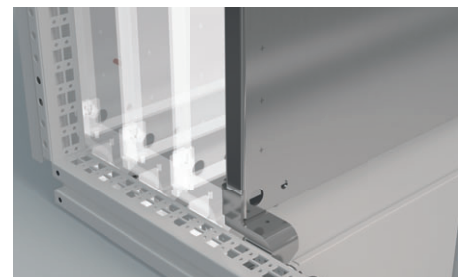
- Welded frame construction made of special cold-rolled profile—powder coated
- The closed cold-rolled profile is made out of a zinc-plated sheet steel and is welded by a laser
- Load capacity 1500 kg
- Single-door and double-door cabinet designs
- Can be installed without an additional supporting plinth
- Designer lift-up handle
- Easy to close doors thanks to a special locking system
- Maximum use of interior space—possibility of placing the mounting plate between the rear posts
- Easy side panel fixing thanks to the possibility of hanging
- Possible to assemble into a row
- 46 sizes from 1 800 × 400 × 500 mm up to 2 200 × 1 200 × 800 mm
- Wide assortment of accessories
- Tailor-made customer solutions—cut-outs according to your requirements before and after final surface finishing accessories
- Norms EN 61439, EN 62208, UL listed



FSE-200804



Wide range of system rails creates additional mounting levels for individual installation.



Maximum use of interior space—possibility of placing the mounting plate between the rear uprights.

FSE—FREE-STANDING CABINETS

SHEET STEEL



COLOR:  RAL 7035



DESCRIPTION

Material

- Frame: zinc-plated electrolytic material DC1+ZE25/25APC
- Cabinet: sheet steel
- Mounting plate: zinc-plated sheet steel

Cabinet surface finish

- Epoxypolyester powder coating

Color

- RAL 7035 for indoor use

Degree of protection

- IP55 according to the EN 60529 norm (the degree of protection can be reduced after mounting some accessories)

Mechanical durability

- IK10 according to IEC 62262

Supply includes

- Welded frame construction of the cabinet
- Full door with swing handle (single-door/two-door), doors are

equipped with a four-point locking system

- The door hinges are located on the right-hand side of the single-door rack (door can be changed to open from right to left)
- Rear and top panel
- Multi-part gland plate
- Mounting plate with raster

FSE—FREE-STANDING CABINETS, HEIGHT 1800 mm

| Cabinet | H (mm) | 1800 | 1800 | 1800 | 1800 | 1800 | 1800 | 1800 | 1800 | 1800 |
|------------------------------|--------------------|------------|------------|------------|------------|------------|------------|------------|------------|------------|
| | W (mm) | 400 | 400 | 600 | 600 | 600 | 800 | 800 | 800 | 800 |
| Mounting plate | D (mm) | 500 | 600 | 400 | 500 | 600 | 400 | 500 | 500 | 600 |
| | H1 (mm) | 1691 | 1691 | 1691 | 1691 | 1691 | 1691 | 1691 | 1691 | 1691 |
| Material thickness (mm) | W2 (mm) | 297 | 297 | 497 | 497 | 497 | 697 | 697 | 697 | 697 |
| | Rear and top panel | 1.5 | 1.5 | 1.5 | 1.5 | 1.5 | 1.5 | 1.5 | 1.5 | 1.5 |
| | Door | 2 | 2 | 2 | 2 | 2 | 2 | 2 | 2 | 2 |
| Door | Mounting plate | 3 | 3 | 3 | 3 | 3 | 3 | 3 | 3 | 3 |
| | Door | 1 | 1 | 1 | 1 | 1 | 1 | 1 | 2 | 1 |
| Gland plate, number of parts | | 2 | 3 | 2 | 2 | 3 | 2 | 2 | 2 | 3 |
| Weight (kg) | | 71.2 | 72.1 | 91.2 | 92.3 | 95.9 | 112.3 | 115.7 | 118.1 | 120.5 |
| Code | 1 pc | FSE-180405 | FSE-180406 | FSE-180604 | FSE-180605 | FSE-180606 | FSE-180804 | FSE-180805 | FSE-280805 | FSE-180806 |

ACCESSORIES

| Side panels | 1 set | ID-F-S1805 | ID-F-S1806 | ID-F-S1804 | ID-F-S1805 | ID-F-S1806 | ID-F-S1804 | ID-F-S1805 | ID-F-S1805 | ID-F-S1806 |
|----------------|----------------|-----------------|------------|------------|------------|------------|------------|------------|------------|------------|
| Baying kit | 1 set | ID-F-ROW | ID-F-ROW | ID-F-ROW | ID-F-ROW | ID-F-ROW | ID-F-ROW | ID-F-ROW | ID-F-ROW | ID-F-ROW |
| Plinth 100 mm | front and rear | 1 set | ID-F-PF04 | ID-F-PF04 | ID-F-PF06 | ID-F-PF06 | ID-F-PF06 | ID-F-PF08 | ID-F-PF08 | ID-F-PF08 |
| | side parts | | ID-F-PS05 | ID-F-PS06 | ID-F-PS04 | ID-F-PS05 | ID-F-PS06 | ID-F-PS04 | ID-F-PS05 | ID-F-PS05 |
| Plinth 200 mm | front and rear | 1 set | ID-F-F0402 | ID-F-F0402 | ID-F-F0602 | ID-F-F0602 | ID-F-F0602 | ID-F-F0802 | ID-F-F0802 | ID-F-F0802 |
| | side parts | | ID-F-S0502 | ID-F-S0602 | ID-F-S0402 | ID-F-S0502 | ID-F-S0602 | ID-F-S0402 | ID-F-S0502 | ID-F-S0502 |
| Mounting rails | 1 set | see pages 14–16 | | | | | | | | |

To order the cabinet without the mounting plate, use order number FSE-xxxxx-01.

| FSE—FREE-STANDING CABINETS, HEIGHT 1800 mm | | | | | | | | | | |
|--|--------------------|-------|-----------------|-------------|-------------|-------------|-------------|-------------|-------------|-------------|
| Cabinet | H (mm) | | 1800 | 1800 | 1800 | 1800 | 1800 | 1800 | 1800 | 1800 |
| | W (mm) | | 800 | 1000 | 1000 | 1000 | 1000 | 1200 | 1200 | 1200 |
| | D (mm) | | 600 | 400 | 400 | 500 | 600 | 400 | 500 | 600 |
| Mounting plate | H1 (mm) | | 1691 | 1691 | 1691 | 1691 | 1691 | 1691 | 1691 | 1691 |
| | W2 (mm) | | 697 | 897 | 897 | 897 | 897 | 1097 | 1097 | 1097 |
| Material thickness (mm) | Rear and top panel | | 1.5 | 1.5 | 1.5 | 1.5 | 1.5 | 1.5 | 1.5 | 1.5 |
| | Door | | 2 | 2 | 2 | 2 | 2 | 2 | 2 | 2 |
| | Mounting plate | | 3 | 3 | 3 | 3 | 3 | 3 | 3 | 3 |
| Door | | | 2 | 1 | 2 | 1 | 1 | 2 | 2 | 2 |
| Gland plate, number of parts | | | 3 | 2 | 2 | 2 | 3 | 4 | 4 | 6 |
| Weight (kg) | | | 123.9 | 138.9 | 142.3 | 139.8 | 140.8 | 166.2 | 167.2 | 168.2 |
| Code | | 1 pc | FSE-280806 | FSE-181004 | FSE-281004 | FSE-181005 | FSE-181006 | FSE-281204 | FSE-281205 | FSE-281206 |
| ACCESSORIES | | | | | | | | | | |
| Side panels | | 1 set | ID-F-S1806 | ID-F-S1804 | ID-F-S1804 | ID-F-S1805 | ID-F-S1806 | ID-F-S1804 | ID-F-S1805 | ID-F-S1806 |
| Baying kit | | 1 set | ID-F-ROW | ID-F-ROW | ID-F-ROW | ID-F-ROW | ID-F-ROW | ID-F-ROW | ID-F-ROW | ID-F-ROW |
| Plinth 100 mm | front and rear | 1 set | ID-F-PF08 | ID-F-PF10 | ID-F-PF10 | ID-F-PF10 | ID-F-PF10 | ID-F-PF12 | ID-F-PF12 | ID-F-PF12 |
| | side parts | | ID-F-PS06 | ID-F-PS04 | ID-F-PS04 | ID-F-PS05 | ID-F-PS06 | ID-F-PS04 | ID-F-PS05 | ID-F-PS06 |
| Plinth 200 mm | front and rear | 1 set | ID-F-PF0802 | ID-F-PF1002 | ID-F-PF1002 | ID-F-PF1002 | ID-F-PF1002 | ID-F-PF1202 | ID-F-PF1202 | ID-F-PF1202 |
| | side parts | | ID-F-PS0602 | ID-F-PS0402 | ID-F-PS0402 | ID-F-PS0502 | ID-F-PS0602 | ID-F-PS0402 | ID-F-PS0502 | ID-F-PS0602 |
| Mounting rails | | 1 set | see pages 14–16 | | | | | | | |

To order the cabinet without the mounting plate, use order number FSE-xxxxxx-01.

| FSE—FREE-STANDING CABINETS, HEIGHT 2 000 mm | | | | | | | | | | |
|---|--------------------|-------|-----------------|-------------|-------------|-------------|-------------|-------------|-------------|-------------|
| Cabinet | H (mm) | | 2 000 | 2 000 | 2 000 | 2 000 | 2 000 | 2 000 | 2 000 | 2 000 |
| | W (mm) | | 400 | 400 | 600 | 600 | 600 | 600 | 800 | 800 |
| | D (mm) | | 500 | 600 | 400 | 500 | 600 | 800 | 400 | 400 |
| Mounting plate | H1 (mm) | | 1891 | 1891 | 1891 | 1891 | 1891 | 1891 | 1891 | 1891 |
| | W2 (mm) | | 297 | 297 | 497 | 497 | 497 | 497 | 497 | 697 |
| Material thickness (mm) | Rear and top panel | | 1.5 | 1.5 | 1.5 | 1.5 | 1.5 | 1.5 | 1.5 | 1.5 |
| | Door | | 2 | 2 | 2 | 2 | 2 | 2 | 2 | 2 |
| | Mounting plate | | 3 | 3 | 3 | 3 | 3 | 3 | 3 | 3 |
| Door | | | 1 | 1 | 1 | 1 | 1 | 1 | 1 | 1 |
| Gland plate, number of parts | | | 2 | 3 | 2 | 2 | 3 | 4 | 2 | 2 |
| Weight (kg) | | | 76.5 | 77.9 | 99.4 | 101.1 | 102.8 | 106.4 | 123.6 | 123.6 |
| Code | | 1 pc | FSE-200405 | FSE-200406 | FSE-200604 | FSE-200605 | FSE-200606 | FSE-200608 | FSE-200804 | FSE-200804 |
| ACCESSORIES | | | | | | | | | | |
| Side panels | | 1 set | ID-F-S2005 | ID-F-S2006 | ID-F-S2004 | ID-F-S2005 | ID-F-S2006 | ID-F-S2008 | ID-F-S2004 | ID-F-S2004 |
| Baying kit | | 1 set | ID-F-ROW | ID-F-ROW | ID-F-ROW | ID-F-ROW | ID-F-ROW | ID-F-ROW | ID-F-ROW | ID-F-ROW |
| Plinth 100 mm | front and rear | 1 set | ID-F-PF04 | ID-F-PF04 | ID-F-PF06 | ID-F-PF06 | ID-F-PF06 | ID-F-PF06 | ID-F-PF08 | ID-F-PF08 |
| | side parts | | ID-F-PS05 | ID-F-PS06 | ID-F-PS04 | ID-F-PS05 | ID-F-PS06 | ID-F-PS08 | ID-F-PS04 | ID-F-PS04 |
| Plinth 200 mm | front and rear | 1 set | ID-F-PF0402 | ID-F-PF0402 | ID-F-PF0602 | ID-F-PF0602 | ID-F-PF0602 | ID-F-PF0602 | ID-F-PF0802 | ID-F-PF0802 |
| | side parts | | ID-F-PS0502 | ID-F-PS0602 | ID-F-PS0402 | ID-F-PS0502 | ID-F-PS0602 | ID-F-PS0802 | ID-F-PS0402 | ID-F-PS0402 |
| Mounting rails | | 1 set | see pages 14–16 | | | | | | | |

To order the cabinet without the mounting plate, use order number FSE-xxxxxx-01.

| FSE—FREE-STANDING CABINETS, HEIGHT 2 000 mm | | | | | | | | |
|---|--------------------|-----------------|-------------|-------------|-------------|-------------|-------------|-------------|
| Cabinet | H (mm) | 2 000 | 2 000 | 2 000 | 2 000 | 2 000 | 2 000 | 2 000 |
| | W (mm) | 800 | 800 | 800 | 1 000 | 1 000 | 1 000 | 1 000 |
| | D (mm) | 500 | 600 | 800 | 400 | 400 | 500 | 500 |
| Mounting plate | H1 (mm) | 1 891 | 1 891 | 1 891 | 1 891 | 1 891 | 1 891 | 1 891 |
| | W2 (mm) | 697 | 697 | 697 | 897 | 897 | 897 | 897 |
| Tloušťka materiálu (mm) | Rear and top panel | 1.5 | 1.5 | 1.5 | 1.5 | 1.5 | 1.5 | 1.5 |
| | Door | 2 | 2 | 2 | 2 | 2 | 2 | 2 |
| | Mounting plate | 3 | 3 | 3 | 3 | 3 | 3 | 3 |
| Door | | 1 | 1 | 1 | 1 | 2 | 1 | 2 |
| Gland plate, number of parts | | 2 | 3 | 4 | 2 | 2 | 2 | 2 |
| Weight (kg) | | 125.5 | 127 | 131.5 | 144.4 | 148.9 | 148.4 | 154.5 |
| Code | 1 pc | FSE-200805 | FSE-200806 | FSE-200808 | FSE-201004 | FSE-301004 | FSE-201005 | FSE-301005 |
| ACCESSORIES | | | | | | | | |
| Side panels | 1 set | ID-F-S2005 | ID-F-S2006 | ID-F-S2008 | ID-F-S2004 | ID-F-S2004 | ID-F-S2005 | ID-F-S2005 |
| Baying kit | 1 set | ID-F-ROW | ID-F-ROW | ID-F-ROW | ID-F-ROW | ID-F-ROW | ID-F-ROW | ID-F-ROW |
| Plinth 100 mm | front and rear | 1 set | ID-F-PF08 | ID-F-PF08 | ID-F-PF08 | ID-F-PF10 | ID-F-PF10 | ID-F-PF10 |
| | side parts | | ID-F-PS05 | ID-F-PS06 | ID-F-PS08 | ID-F-PS04 | ID-F-PS04 | ID-F-PS05 |
| Plinth 200 mm | front and rear | 1 set | ID-F-PF0802 | ID-F-PF0802 | ID-F-PF0802 | ID-F-PF1002 | ID-F-PF1002 | ID-F-PF1002 |
| | side parts | | ID-F-PS0502 | ID-F-PS0602 | ID-F-PS0802 | ID-F-PS0402 | ID-F-PS0402 | ID-F-PS0502 |
| Mounting rails | | see pages 14–16 | | | | | | |

To order the cabinet without the mounting plate, use order number FSE-xxxxxx-01.

| FSE—FREE-STANDING CABINETS, HEIGHT 2 000 mm | | | | | | | | |
|---|--------------------|-----------------|-------------|-------------|-------------|-------------|-------------|-------------|
| Cabinet | H (mm) | 2 000 | 2 000 | 2 000 | 2 000 | 2 000 | 2 000 | 2 000 |
| | W (mm) | 1 000 | 1 000 | 1 000 | 1 200 | 1 200 | 1 200 | 1 200 |
| | D (mm) | 600 | 600 | 800 | 400 | 500 | 600 | 800 |
| Mounting plate | H1 (mm) | 1 891 | 1 891 | 1 891 | 1 891 | 1 891 | 1 891 | 1 891 |
| | W2 (mm) | 897 | 897 | 897 | 1 097 | 1 097 | 1 097 | 1 097 |
| Material thickness (mm) | Rear and top panel | 1.5 | 1.5 | 1.5 | 1.5 | 1.5 | 1.5 | 1.5 |
| | Door | 2 | 2 | 2 | 2 | 2 | 2 | 2 |
| | Mounting plate | 3 | 3 | 3 | 3 | 3 | 3 | 3 |
| Door | | 1 | 2 | 1 | 2 | 2 | 2 | 2 |
| Gland plate, number of parts | | 3 | 3 | 4 | 4 | 4 | 6 | 8 |
| Weight (kg) | | 153.3 | 159.8 | 157.8 | 140.9 | 177.2 | 183.2 | 200.2 |
| Code | 1 pc | FSE-201006 | FSE-301006 | FSE-201008 | FSE-301204 | FSE-301205 | FSE-301206 | FSE-301208 |
| Accessories | | | | | | | | |
| Side panels | 1 set | ID-F-S2006 | ID-F-S2006 | ID-F-S2008 | ID-F-S2004 | ID-F-S2005 | ID-F-S2006 | ID-F-S2008 |
| Baying kit | 1 set | ID-F-ROW | ID-F-ROW | ID-F-ROW | ID-F-ROW | ID-F-ROW | ID-F-ROW | ID-F-ROW |
| Plinth 100 mm | front and rear | 1 set | ID-F-PF10 | ID-F-PF10 | ID-F-PF10 | ID-F-PF12 | ID-F-PF12 | ID-F-PF12 |
| | side parts | | ID-F-PS06 | ID-F-PS06 | ID-F-PS08 | ID-F-PS04 | ID-F-PS05 | ID-F-PS06 |
| Plinth 200 mm | front and rear | 1 set | ID-F-PF1002 | ID-F-PF1002 | ID-F-PF1002 | ID-F-PF1202 | ID-F-PF1202 | ID-F-PF1202 |
| | side parts | | ID-F-PS0602 | ID-F-PS0602 | ID-F-PS0802 | ID-F-PS0402 | ID-F-PS0502 | ID-F-PS0602 |
| Mounting rails | | see pages 14–16 | | | | | | |

To order the cabinet without the mounting plate, use order number FSE-xxxxxx-01.

| FSE—FREE-STANDING CABINETS, HEIGHT 2 200 mm | | | | | | | | | |
|---|--------------------|-----------------|-------------|-------------|-------------|-------------|-------------|-------------|-------------|
| Cabinet | H (mm) | 2 200 | 2 200 | 2 200 | 2 200 | 2 200 | 2 200 | 2 200 | 2 200 |
| | W (mm) | 400 | 600 | 600 | 800 | 800 | 1000 | 1200 | 1200 |
| | D (mm) | 600 | 600 | 800 | 600 | 800 | 600 | 600 | 800 |
| Mounting plate | H1 (mm) | 2 091 | 2 091 | 2 091 | 2 091 | 2 091 | 2 091 | 2 091 | 2 091 |
| | W2 (mm) | 297 | 497 | 497 | 697 | 697 | 897 | 1097 | 1097 |
| Material thickness (mm) | Rear and top panel | 1.5 | 1.5 | 1.5 | 1.5 | 1.5 | 1.5 | 1.5 | 1.5 |
| | Door | 2 | 2 | 2 | 2 | 2 | 2 | 2 | 2 |
| | Mounting plate | 3 | 3 | 3 | 3 | 3 | 3 | 3 | 3 |
| Door | | 1 | 1 | 1 | 1 | 1 | 1 | 2 | 2 |
| Gland plate, number of parts | | 3 | 3 | 4 | 3 | 4 | 3 | 6 | 8 |
| Weight (kg) | | 81.5 | 108.2 | 112.5 | 134.9 | 139.9 | 161.5 | 198.2 | 205.2 |
| Code | 1 pc | FSE-220406 | FSE-220606 | FSE-220608 | FSE-220806 | FSE-220808 | FSE-221006 | FSE-321206 | FSE-321208 |
| ACCESSORIES | | | | | | | | | |
| Side panels | 1 set | ID-F-S2206 | ID-F-S2206 | ID-F-S2208 | ID-F-S2206 | ID-F-S2208 | ID-F-S2206 | ID-F-S2206 | ID-F-S2208 |
| Baying kit | 1 set | ID-F-ROW | ID-F-ROW | ID-F-ROW | ID-F-ROW | ID-F-ROW | ID-F-ROW | ID-F-ROW | ID-F-ROW |
| Plinth 100 mm | front and rear | 1 set | ID-F-PF04 | ID-F-PF06 | ID-F-PF06 | ID-F-PF08 | ID-F-PF08 | ID-F-PF10 | ID-F-PF12 |
| | side parts | | ID-F-PS06 | ID-F-PS06 | ID-F-PS08 | ID-F-PS06 | ID-F-PS08 | ID-F-PS06 | ID-F-PS06 |
| Plinth 200 mm | front and rear | 1 set | ID-F-PF0402 | ID-F-PF0602 | ID-F-PF0602 | ID-F-PF0802 | ID-F-PF0802 | ID-F-PF1002 | ID-F-PF1202 |
| | side parts | | ID-F-PS0602 | ID-F-PS0602 | ID-F-PS0802 | ID-F-PS0602 | ID-F-PS0802 | ID-F-PS0602 | ID-F-PS0802 |
| Mounting rails | | see pages 14–16 | | | | | | | |

To order the cabinet without the mounting plate, use order number FSE-xxxxxx-01.

Recommended Accessories



Cooling units



Filter fans

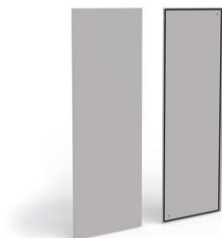


Horizontal and vertical extrusions

FSE—FREE-STANDING CABINETS

ACCESSORIES

SIDE PANELS



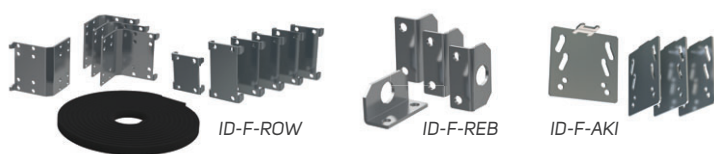
- Material: 1.5mm sheet steel
- Color: RAL 7035
- Supply includes: mounting accessories

PLINTHS



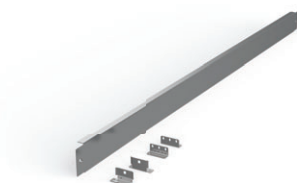
- Material: corner pieces 2mm, other 1.5mm sheet steel
- Color: RAL 9005
- It is necessary to order front and side set together
- Possibility of installing two plinths of 100 mm height apart
- Supply includes: mounting accessories

BAYING KITS



- Clamps material spojek: 3mm (5mm for eye-bolts) zinc-plated sheet steel
- Seal material: polyethylene foam PE-01, density 30-35 kg/m³
- Supply includes:
 - ID-F-ROW: 4 pcs corner clamps, 6 pcs flat joints, gaskets, mounting accessories
 - ID-F-REB: 4 flat eye bolts, mounting accessories
 - ID-F-AKI: 4 flat clamps for indoor and outdoor mounting, mounting accessories

MOUNTING PLATE—FILLER



- Material: 1.5mm zinc-plated sheet steel
- Supply includes: mounting accessories and wall-mounting brackets

| Code | For cabinet height × width (mm) | Package * |
|------------|---------------------------------|-----------|
| ID-F-S1804 | 1800 × 400 | 1 set |
| ID-F-S1805 | 1800 × 500 | 1 set |
| ID-F-S1806 | 1800 × 600 | 1 set |
| ID-F-S2004 | 2000 × 400 | 1 set |
| ID-F-S2005 | 2000 × 500 | 1 set |
| ID-F-S2006 | 2000 × 600 | 1 set |
| ID-F-S2008 | 2000 × 800 | 1 set |
| ID-F-S2206 | 2200 × 600 | 1 set |
| ID-F-S2208 | 2200 × 800 | 1 set |

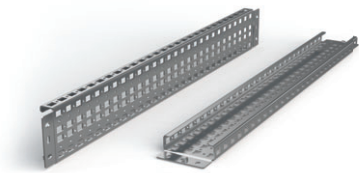
* 1 set—2 pcs.

| Code for 100 mm high plinth | Code for 200 mm high plinth | For cabinet width (mm) | Package |
|----------------------------------|-----------------------------|------------------------|---------|
| Plinth—front and rear set | | | |
| ID-F-PF04 | ID-F-PF0402 | 400 | 1 set |
| ID-F-PF06 | ID-F-PF0602 | 600 | 1 set |
| ID-F-PF08 | ID-F-PF0802 | 800 | 1 set |
| ID-F-PF10 | ID-F-PF1002 | 1000 | 1 set |
| ID-F-PF12 | ID-F-PF1202 | 1200 | 1 set |
| Plinth—sides set | | | |
| ID-F-PS04 | ID-F-PS0402 | 400 | 1 set |
| ID-F-PS05 | ID-F-PS0502 | 500 | 1 set |
| ID-F-PS06 | ID-F-PS0602 | 600 | 1 set |
| ID-F-PS08 | ID-F-PS0802 | 800 | 1 set |

| Code | Package |
|----------|--|
| ID-F-ROW | 4 pcs corner clamps and 6 pcs flat joints, gaskets |
| ID-F-REB | 4 pcs flat eye bolts |
| ID-F-AKI | 4 pcs flat clamps for indoor and outdoor mounting |

| Code | For cabinet height (mm) |
|------------|-------------------------|
| ID-F-MMP18 | 1800 |
| ID-F-MMP20 | 2000 |
| ID-F-MMP22 | 2200 |

HORIZONTAL/VERTICAL EXTRUSIONS



ID-F-H (for mounting on the sides of the frame profiles)



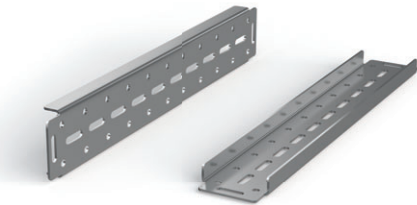
ID-F-NH (for mounting between the frame profiles)

- Material: 2 mm zinc-plated sheet steel
- Rail width: 90 mm (ID-F-H), 41.2 mm (ID-F-NH)
- Application: to create more mounting planes (horizontal and vertical)
- Mounting: ID-F-Hx on the sides of the frame profiles
- Mounting: ID-F-NHx between the frame profiles
- Supply includes: mounting accessories

| Code | For cabinets with height/width/depth (mm) | Load capacity in horizontal position | Load capacity in vertical position | Package * |
|--|---|--------------------------------------|------------------------------------|-----------|
| Mounting on the sides of the frame profiles | | | | |
| ID-F-H4 | 400 | 140 kg | 240 kg | 1 set |
| ID-F-H5 | 500 | 100 kg | 240 kg | 1 set |
| ID-F-H6 | 600 | 70 kg | 240 kg | 1 set |
| ID-F-H8 | 800 | 50 kg | 180 kg | 1 set |
| ID-F-H10 | 1000 | 50 kg | 140 kg | 1 set |
| ID-F-H12 | 1200 | 50 kg | 120 kg | 1 set |
| ID-F-H18 | 1800 | 36 kg | 80 kg | 1 set |
| ID-F-H20 | 2 000 | 32 kg | 70 kg | 1 set |
| ID-F-H22 | 2 200 | 28 kg | 65 kg | 1 set |
| Mounting between the frame profiles | | | | |
| ID-F-NH4 | 400 | 95 kg | 95 kg | 1 set |
| ID-F-NH5 | 500 | 85 kg | 85 kg | 1 set |
| ID-F-NH6 | 600 | 70 kg | 70 kg | 1 set |
| ID-F-NH8 | 800 | 56 kg | 56 kg | 1 set |
| ID-F-NH10 | 1000 | 45 kg | 45 kg | 1 set |
| ID-F-NH12 | 1200 | 35 kg | 35 kg | 1 set |
| ID-F-NH18 | 1800 | 21 kg | 21 kg | 1 set |
| ID-F-NH20 | 2 000 | 20 kg | 20 kg | 1 set |
| ID-F-NH22 | 2 200 | 19 kg | 19 kg | 1 set |

* 1 set—2 pcs.

HORIZONTAL EXTRUSIONS



- Material: 3mm zinc-plated sheet steel
- Rail width: 87.5 mm
- Application: for installing high weight components
- Mounting: mount on frame profiles
- Supply includes: mounting accessories

| Code | For cabinet width/depth (mm) | Load capacity in horizontal position | Package * |
|-----------|------------------------------|--------------------------------------|-----------|
| ID-F-HH4 | 400 | 260 kg | 1 set |
| ID-F-HH5 | 500 | 210 kg | 1 set |
| ID-F-HH6 | 600 | 175 kg | 1 set |
| ID-F-HH8 | 800 | 130 kg | 1 set |
| ID-F-HH10 | 1000 | 100 kg | 1 set |
| ID-F-HH12 | 1200 | 65 kg | 1 set |

* 1 set—2 pcs.

DOOR-MOUNTING RAILS

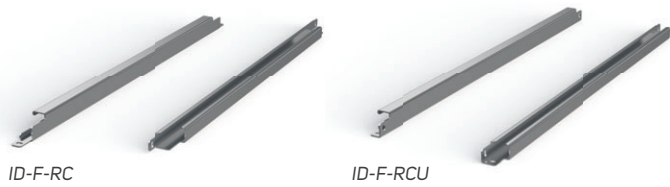


- Material: 2mm zinc-plated sheet steel
- Rail width: 20 mm
- Application: for creating more mounting planes on the inner sides of the doors
- Mounting: into the door frame
- Supply includes: mounting accessories

| Code | For door/wing dimensions (mm) | Package * |
|-----------|-------------------------------|-----------|
| ID-F-VD4 | 400 | 1 set |
| ID-F-VD5 | 500 | 1 set |
| ID-F-VD6 | 600 | 1 set |
| ID-F-VD8 | 800 | 1 set |
| ID-F-VD10 | 1000 | 1 set |

* 1 set—2 pcs.

PROFILE FOR CABLE FIXING

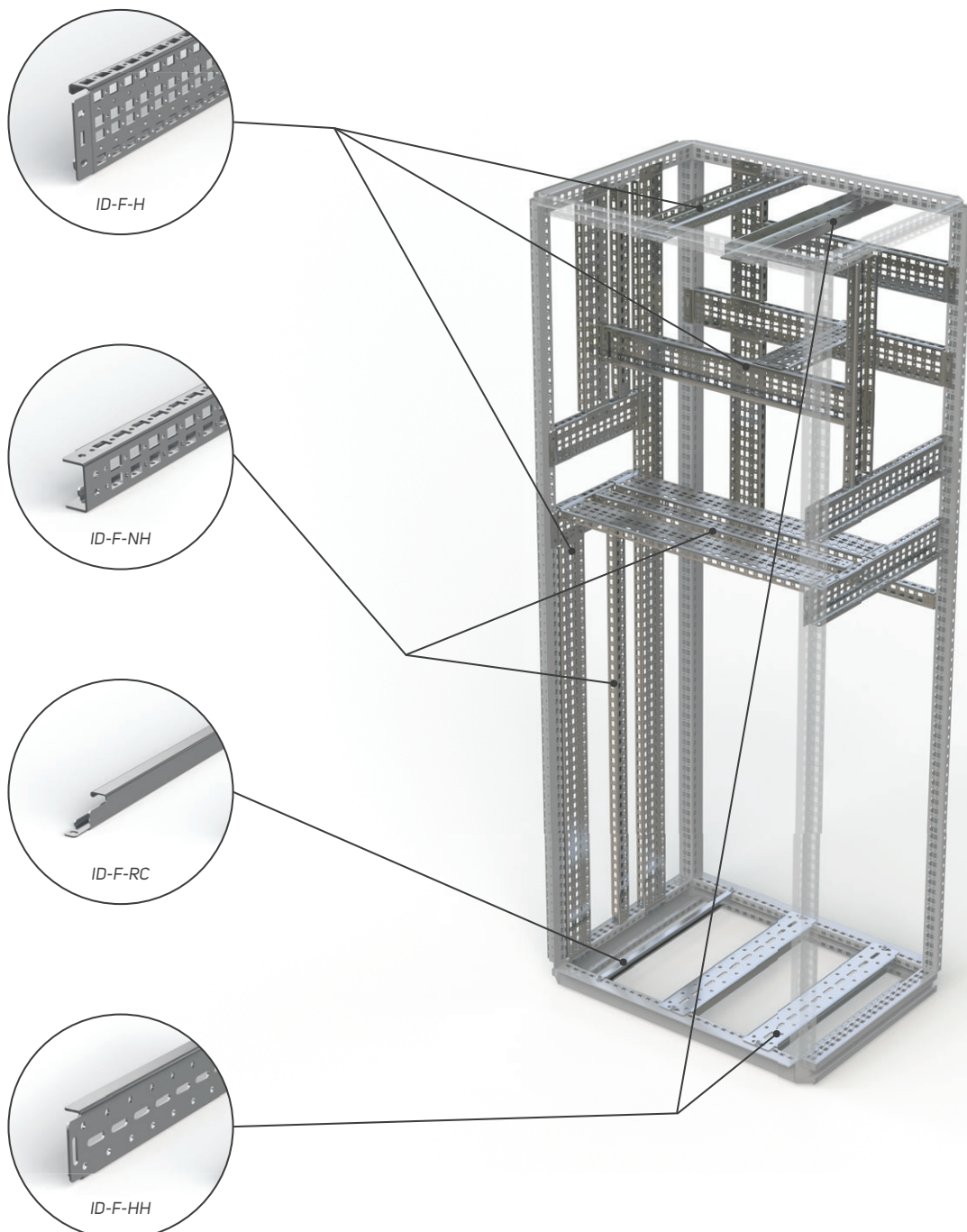


- Material: 2mm zinc-plated sheet steel
- Application: for cable glands
- Mounting: mount on the lower side profile of the frame or on the mounting plate (ID-F-RCUxx)
- Mounting: mount between the bottom side frame profiles (ID-F-RCxx)
- Supply includes: mounting accessories

| Code | Code | For cabinet width/depth (mm) | Package * |
|-----------|------------|------------------------------|-----------|
| ID-F-RC4 | ID-F-RCU4 | 400 | 1 set |
| ID-F-RC6 | ID-F-RCU6 | 600 | 1 set |
| ID-F-RC8 | ID-F-RCU8 | 800 | 1 set |
| ID-F-RC10 | ID-F-RCU10 | 1000 | 1 set |
| ID-F-RC12 | ID-F-RCU12 | 1200 | 1 set |

* 1 set—2 pcs.

Possible to install horizontal and vertical rails



19" RAILS



- Material: 2mm zinc-plated sheet steel
- Application: to make 19" planes in the FSE cabinets
- Mounting: onto the ID-F-UBxx + ID-F-Hxx brackets
- Supply includes: 19" vertical extrusions and mounting accessories

| Code * | For cabinet height × width (mm) | Package * |
|-----------|---------------------------------|-----------|
| ID-F-V186 | 1 800 × 600 (36U) | 1 set |
| ID-F-V206 | 2 000×600 (42U) | 1 set |
| ID-F-V226 | 2 200×600 (46U) | 1 set |
| ID-F-V188 | 1 800×800 (36U) | 1 set |
| ID-F-V208 | 2 000×800 (42U) | 1 set |
| ID-F-V228 | 2 200×800 (46U) | 1 set |

* it's necessary to order 19" brackets ID-F-UBxx.

19" BRACKETS



ID-F-UB08

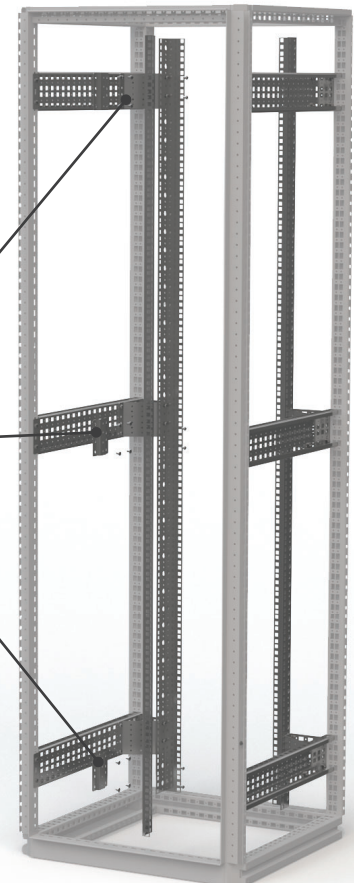
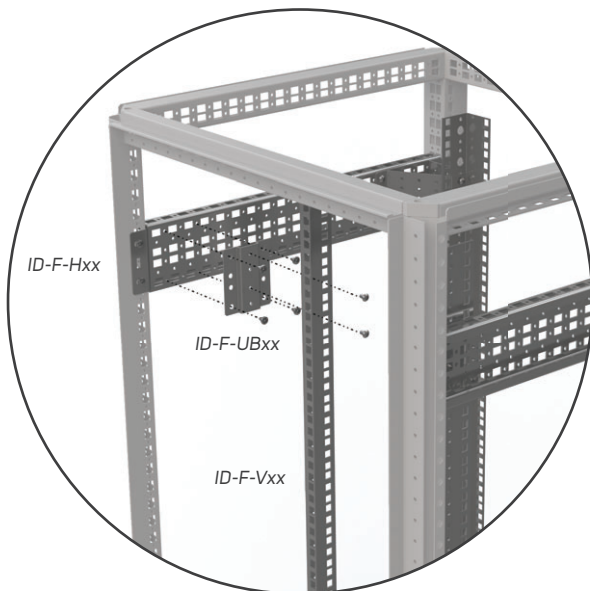
ID-F-UB06

- Material: 1.5mm (ID-F-UB06); 2mm (ID-F-UB08) zinc-plated sheet steel
- Application: to make 19" planes in the FSE cabinets of width 600 a 800 mm
- Mounting: onto system extrusions ID-F-Hxx
- Supply includes: brackets for 19" vertical extrusions and mounting accessories

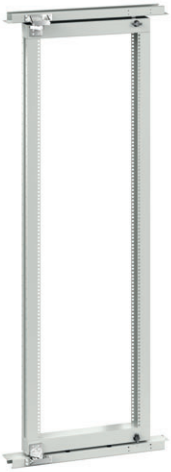
| Code | For cabinet width (mm) | Package * |
|-----------|------------------------|-----------|
| ID-F-UB06 | 600 | 1 set |
| ID-F-UB08 | 800 | 1 set |

* 1 set—6 pcs.

Mounting 19" extrusion



19" SWING FRAME



- Material: 2mm sheet steel
- Swing frame load-bearing capacity: 150 kg
- Use: to create a swinging 19" plane and an access point to the back of the rack cabinet with width of 800 mm
- Installation: onto the cabinet structure
- Supply includes: 19" swing frame including a lock and horizontal crossbars for mounting

| Code | For cabinet height × width (mm) | Package |
|----------------|---------------------------------|---------|
| ID-F-1808-SF15 | 1800 × 800 | 1 set |
| ID-F-2008-SF15 | 2000 × 800 | 1 set |
| ID-F-2208-SF15 | 2200 × 800 | 1 set |

DOOR STOP



- Application: for FSE cabinets
- Supply includes: door stop and mounting accessories

| Code | Package |
|---------|---------|
| ID-F-DS | 1 pc |

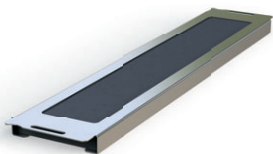
DOOR SWITCH



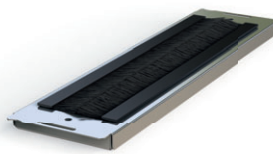
- Brackets material: 2mm zinc-plated sheet steel
- Door switch: IP65, plastic, 1NO + 1NC, PG13.5, -25 °C to +70 °C
- Supply includes: door switch and mounting accessories

| Code | Package |
|---------|---------|
| ID-F-DC | 1 pc |

CABLE GLAND PLATE WITH GASKET



ID-F-CG1xx

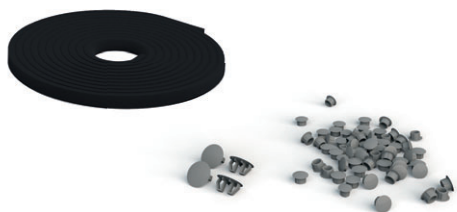


ID-F-CG2xx

- Material: 1mm zinc-plated sheet steel
- Application: for cable introduction
- Version: with PU sealing (ID-F-CG1xx); with two rows of brushes (ID-F-CG2xx)
- Mounting: between the frame profiles to replace the cable gland plate
- Supply includes: mounting accessories

| Code | Code | For cabinet width (mm) | Package |
|------------|------------|------------------------|---------|
| ID-F-CG104 | ID-F-CG204 | 400 | 1 set |
| ID-F-CG106 | ID-F-CG206 | 600 | 1 set |
| ID-F-CG108 | ID-F-CG208 | 800 | 1 set |
| ID-F-CG110 | ID-F-CG210 | 1000 | 1 set |
| ID-F-CG112 | ID-F-CG212 | 1200 | 1 set |

SEALING SET IP55



- Material: PVC
- Application: plugs and sealing tape for IP55 protection
- Supply includes: whole set for FSE cabinets

| Code | Package |
|------------|---------|
| ID-F-KIT55 | 1pc |

POCKETS FOR DOCUMENTS



- Material: ABS
- Color: RAL 7035
- Dimensions: 234 × 241 × 31 mm (H × W × D)
- Mounting: with a self-adhesive tape
- Supply includes: pocket for documents and self-adhesive tape

| Code | Package |
|----------|---------|
| ID-PO-A4 | 1pc |

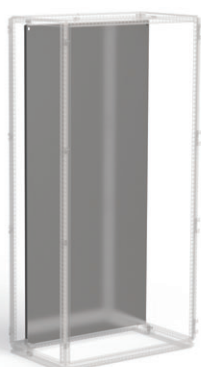


- Material: 1mm sheet steel
- Color: RAL 7035
- Mounting: onto the door frame
- Supply includes: pocket for documents and mounting accessories

| Code | For door/wing dimensions (mm) | Package |
|--------------|-------------------------------|---------|
| ID-F-MP04 | 400 | 1 set |
| ID-F-MP06 | 600 | 1 set |
| ID-F-MP08 | 800 | 1 set |
| ID-F-MP10 | 1000 | 1 set |
| ID-F-MP102 * | 1000 2D | 1 set |
| ID-F-MP06 * | 1200 | 1 set |

* Pocket for double-wing cabinet, width suitable for mounting onto the right wing.

SPARE MOUNTING PLATE



- Material: 3mm zinc-plated sheet steel
- Supply includes: mounting plate with marked raster, mounting accessories and brackets

| Code | For cabinet height × width (mm) |
|-------------|---------------------------------|
| ID-F-SP1804 | 1800 × 400 |
| ID-F-SP1806 | 1800 × 600 |
| ID-F-SP1808 | 1800 × 800 |
| ID-F-SP1810 | 1800 × 1000 |
| ID-F-SP1812 | 1800 × 1200 |
| ID-F-SP2004 | 2000 × 400 |
| ID-F-SP2006 | 2000 × 600 |
| ID-F-SP2008 | 2000 × 800 |
| ID-F-SP2010 | 2000 × 1000 |
| ID-F-SP2012 | 2000 × 1200 |
| ID-F-SP2204 | 2200 × 400 |
| ID-F-SP2206 | 2200 × 600 |
| ID-F-SP2208 | 2200 × 800 |
| ID-F-SP2210 | 2200 × 1000 |
| ID-F-SP2212 | 2200 × 1200 |

LOWER BRACKETS FOR MOUNTING PLATES



- Material: 5 mm zinc-plated sheet steel
- Application: to allow the mounting plate to be moved out of the rear position of the frame
- Mounting: mount on the lower side of the frame profile
- Supply includes: mounting accessories

| Code | Package |
|----------|---------|
| ID-F-SBR | 1 pc |

SIDE BRACKETS FOR MOUNTING PLATES



- Material: 2mm zinc-plated sheet steel
- Application: for additional mounting plate fixation and vibration reduction
- Mounting: mount on horizontal ID-F-Hxx or ID-F-NHxx rails or directly on the upright
- Supply includes: mounting accessories

| Code | Typ | Package |
|----------|-----------------------------------|---------|
| ID-F-LBP | Side brackets for mounting plates | 1 set |

DIVIDER PANEL



- Material: 1.5mm zinc-plated sheet steel
- Application: to separate the space between given sections of certain cabinet ranges
- Mounting: mount onto the cabinet upright
- Supply includes: mounting accessories

| Code | For cabinet height × depth (mm) |
|-------------|---------------------------------|
| ID-F-DW1804 | 1800 × 400 |
| ID-F-DW1805 | 1800 × 500 |
| ID-F-DW1806 | 1800 × 600 |
| ID-F-DW2004 | 2 000 × 400 |
| ID-F-DW2005 | 2 000 × 500 |
| ID-F-DW2006 | 2 000 × 600 |
| ID-F-DW2008 | 2 000 × 800 |
| ID-F-DW2206 | 2 200 × 600 |
| ID-F-DW2208 | 2 200 × 800 |

UTILITY LECTERN



- Material: 1.5mm sheet steel
- Color: RAL 7035
- Mounting: mount onto the door frame
- Dimensions: depth 356 mm, width—suitable for the specific cabinet dimensions, for cabinets with a width of 1200 mm and double-winged cabinets 1000 mm for one wing
- Supply includes: mounting accessories

| Code | For cabinet width (mm) | Package |
|---------------|------------------------|---------|
| ID-F-CDD4 | 400 | 1 set |
| ID-F-CDD6 | 600 | 1 set |
| ID-F-CDD8 | 800 | 1 set |
| ID-F-CDD10 | 1000 | 1 set |
| ID-F-CDD102 * | 1000 | 1 set |
| ID-F-CDD6 * | 1200 | 1 set |

* Storage shelf for double-winged cabinet, width makes it suitable for mounting on the right wing.

PARTIAL MOUNTING PLATE



- Material: 3mm zinc-plated sheet steel
- Application: to create additional front and side mounting planes, the plates are versatile and can be mounted horizontally to the appropriate cabinet width or vertically to the appropriate cabinet depth
- Mounting: mount horizontally or vertically on the frame profiles or system rails
- Supply includes: mounting accessories

| Code | For cabinet width (mm) | For cabinet depth (mm) | Mounting plane height (mm) |
|--------------|------------------------|------------------------|----------------------------|
| ID-F-PMP0604 | 600 | – | 400 |
| ID-F-PMP0604 | – | 400 | 600 |
| ID-F-PMP0605 | 600 | – | 500 |
| ID-F-PMP0605 | – | 500 | 600 |
| ID-F-PMP0804 | 800 | – | 400 |
| ID-F-PMP0804 | – | 400 | 800 |
| ID-F-PMP0806 | 800 | – | 600 |
| ID-F-PMP0806 | – | 600 | 800 |
| ID-F-PMP1004 | 1000 | – | 400 |
| ID-F-PMP1004 | – | 400 | 1000 |
| ID-F-PMP1204 | 1200 | – | 400 |
| ID-F-PMP1204 | – | 400 | 1200 |

LOCKS/LOCK INSERTS



- Application: spare inserts instead of the standard 5 mm double-bar
- Supply includes: mounting accessories

| Code | Type | Package |
|-------------|--|---------|
| ID-F-INLK1 | Lock for inTEG FSE, key 5333 | 1 set |
| ID-F-INLK3 | Lock for inTEG FSE, unique key | 1 set |
| ID-F-INS7 | Lock insert 7 mm SQUARE, black ZAMAK | 1 set |
| ID-F-INS8 | Lock insert 8 mm SQUARE, black ZAMAK | 1 set |
| ID-F-INT7 | Lock insert 7 mm TRIANGULAR, black ZAMAK | 1 set |
| ID-F-INT8 | Lock insert 8 mm TRIANGULAR, black ZAMAK | 1 set |
| ID-F-INLKE1 | Lockable VW 1 cap | 1 set |
| ID-F-INSS | Complete handle | 1 set |
| ID-F-INSSA | Door plate double-bar 5 mm | 1 set |

EARTHING



- Material: tinned copper
- Supply includes: various lengths and cross-sections of flat conductors with pressed contact holes with an M8 opening

| Code | Type | Package |
|----------|---|---------|
| ID-F-EK1 | Flat earthing conductor for M8, length 200 mm, cross-section 16 mm ² | 10 pcs |
| ID-F-EK2 | Flat earthing conductor for M8, length 200 mm, cross-section 25 mm ² | 10 pcs |
| ID-F-EK3 | Flat earthing conductor for M8, length 300 mm, cross-section 16 mm ² | 10 pcs |
| ID-F-EK4 | Flat earthing conductor for M8, length 300 mm, cross-section 25 mm ² | 10 pcs |

LED LIGHT



- Material: PC, transparent and ABS
- Application: to light up the interior of the cabinet, option of connecting several light fixtures
- Mounting: mount onto the frame profiles or by magnets
- Dimensions: 357.4 × 32 × 31.16 mm
- Degree of protection: IP20
- Supply includes: complete lighting unit with rocker switch, inter-connection cables

| Code | Type | Package |
|--------|---|---------|
| ID-F-L | Lighting unit LED 4 W, 24-265 V (DC/AC), 0/50/60 Hz | 1 pc |

FASTENERS



- Supply includes: M6x16 ISO 7380 Zn (ID-W-SMS6x16) cage nuts, screws, hinge, pull-out brackets and fasteners for FSE (ID-F-CK)

| Code | Description | Package |
|--------------|---|---------|
| ID-W-CNM6 | Cage nut M6 | 10 pcs |
| ID-W-SMS6x16 | Screw M6×16, ISO 7380, Zn | 10 pcs |
| ID-W-CNM8 | Cage nut M8 | 10 pcs |
| ID-W-SMS8x16 | Screw M8×16, ISO 7380, Zn | 10 pcs |
| ID-F-CK | Hinge, pull-out brackets, replacement fasteners for FSM | 1 set |

EYE BOLTS



- Eye bolts for crane transport
- Application: for assembling with FSM, holes with internal threads under roof
- Material: zinc-plated carbon steel
- DIN580
- M12
- Package includes: 4 pcs

| Code | Package |
|---------|---------|
| ID-F-EB | 1 set |

FILTER FANS



MAIN ADVANTAGES

- Quick assembly without screws and tools into a square cut-out, easy to mount with highly elastic clips
- Easy filter insert replacement from the outside without tools
- Possible to change airflow direction
- Airflow up to 800 m³/h
- Can be mounted in a cabinet with a sheet thickness of 1-2.5 mm
- IP 54 standard degree of protection
- Side and top ventilator placement
- Operating temperature range -10 °C up to +70 °C
- Polyurethane foam sealing around the whole perimeter
- Resistance against UV radiation
- Holes for installation in the CONTEG Modification Center

DESCRIPTION

- Plastic parts made of ABS/PC mix, all parts are self-extinguishing according to UL 94V-0
- Standard color RAL 7035 (different color on request)
- Filter inserts made of synthetic fibres of class G3 according to EN

- 779 and class G4 according to EN 779 and UL 900 class 2 self-extinguishing in class F1 according to DIN 53 438
- Filter inserts are cleaned by washing, compressed air and banging

- Encapsulated fan ball bearings
- IP54 standard degree of protection EN 60529 and NEMA 12 according to UL 50
- IP55 settable (according to EN 60529)

- IP56 when using protective cover against splashing water
- EMC version available on request

Fans

| Code | Airflow | Dimensions H × W × D | Voltage ** | Frequency | Outlet filter grid | Cut-out dimensions | Degree of protection |
|---------------|---------------------------|-------------------------|--------------|-----------|--------------------|------------------------------------|----------------------|
| ID-EF-01-4 | 12/15 m ³ /h | 106.5 × 106.5 × 59.9 mm | 230 VAC | 50/60 Hz | ID-EF-01 | 92 × 92 mm | IP54 |
| ID-EF-01-1 | 15 m ³ /h | 106.5 × 106.5 × 59.9 mm | 24 VDC | – | ID-EF-01 | 92 × 92 mm | IP54 |
| ID-EF-04-4 | 45/50 m ³ /h | 150 × 150 × 65.5 mm | 230 VAC | 50/60 Hz | ID-EF-03 | 125 × 125 mm | IP54 |
| ID-EF-04-1 | 47 m ³ /h | 150 × 150 × 65.5 mm | 24 VDC | – | ID-EF-03 | 125 × 125 mm | IP54 |
| ID-EF-10-4 | 100/110 m ³ /h | 203.9 × 203.9 × 87.5 mm | 230 VAC | 50/60 Hz | ID-EF-05 | 177 × 177 mm | IP54 |
| ID-EF-10-1 | 100 m ³ /h | 203.9 × 203.9 × 87.5 mm | 24 VDC | – | ID-EF-05 | 177 × 177 mm | IP54 |
| ID-EF-23-4 | 230/270 m ³ /h | 250 × 250 × 115.3 mm | 230 VAC | 50/60 Hz | ID-EF-07 | 223 × 223 mm | IP54 |
| ID-EF-22-1 | 225 m ³ /h | 250 × 250 × 115.3 mm | 24 VDC | – | ID-EF-07 | 223 × 223 mm | IP54 |
| ID-EF-52-4 | 520/580 m ³ /h | 325 × 325 × 150.7 mm | 230 VAC | 50/60 Hz | ID-EF-09 | 291 × 291 mm | IP54 |
| ID-EF-71-4 | 710/800 m ³ /h | 325 × 325 × 149 mm | 230 VAC | 50/60 Hz | ID-EF-09 | 291 × 291 mm | IP54 |
| ID-EFT-42-4 * | 420/490 m ³ /h | 324 × 324 × 94 mm | 230 VAC | 50/60 Hz | ID-EF-09 | fan 175 × 175 mm/grid 291 × 291 mm | IP54 |
| ID-EO-TC | Thermostat for cooling | 55 × 33 × 43 mm | 250 VAC/10 A | – | – | – | IP20 |

* Top version.

** Other input voltage options available upon request.



For more detailed information, please refer to the product catalog "Climate control solutions" at www.conteg.com or contact our sales representatives.

COOLING UNITS



MAIN ADVANTAGES

- Cooling capacity from 320 W up to 4 000 W
- Easy maintenance—units don't require filter inserts
- Higher cooling capacity and reliability thanks to highly efficient condenser made of aluminium
- Units are environmentally friendly—cooling medium R134a
- Robust steel-plated or stainless steel cases
- Simple regulation and monitoring
- Easy and fast mounting (side and top version)
- High-quality components ensure long service life and reliability (such as the Mitsubishi Electric rotary piston compressor)
- Transport units in any position
- World-recognized certifications (UL, CUL, CE)
- Holes for installation in the CONTEG Modification Center

DESCRIPTION

Material

- Sheet steel/stainless steel

Color

- RAL 7035

Cooling medium

- R134a

Degree of protection

- Outer circle IP54
- Inner circle IP24

Mounting type

- External
- Fully recessed

Certification

- CE, cURus

Supply includes:

- Unit prepared for connection and immediate use

Cooling units SLIM (wall-mounted or fully recessed mounting)

| Code | Cooling capacity | Dimensions H × W × D | Voltage * | Frequency | Version | Cut-out dimensions | Degree of protection |
|----------------|------------------|----------------------|-----------|-----------|-----------------|--------------------|----------------------|
| AC-WM3-03-4000 | 320 W | 520 × 270 × 110 mm | 230 VAC | 50/60 Hz | sheet steel | 501 × 251 mm | IP54/IP24 |
| AC-WM3-03-4200 | 320 W | 520 × 270 × 110 mm | 230 VAC | 50/60 Hz | stainless steel | 501 × 251 mm | IP54/IP24 |
| AC-WM3-04-4000 | 400 W | 520 × 320 × 110 mm | 230 VAC | 50/60 Hz | sheet steel | 504 × 308 mm | IP54/IP24 |
| AC-WM3-04-4200 | 400 W | 520 × 320 × 110 mm | 230 VAC | 50/60 Hz | stainless steel | 504 × 308 mm | IP54/IP24 |
| AC-WM3-04-400H | 400 W | 340 × 520 × 110 mm | 230 VAC | 50/60 Hz | sheet steel | 321 × 501 mm | IP54/IP24 |
| AC-WM3-04-420H | 400 W | 340 × 520 × 110 mm | 230 VAC | 50/60 Hz | stainless steel | 321 × 501 mm | IP54/IP24 |
| AC-WM3-05-4000 | 500 W | 600 × 320 × 110 mm | 230 VAC | 50/60 Hz | sheet steel | 581 × 301 mm | IP54/IP24 |
| AC-WM3-05-4200 | 500 W | 600 × 320 × 110 mm | 230 VAC | 50/60 Hz | stainless steel | 581 × 301 mm | IP54/IP24 |
| AC-WM3-08-4000 | 820 W | 980 × 395 × 145 mm | 230 VAC | 50/60 Hz | sheet steel | 954 × 376 mm | IP54/IP24 |
| AC-WM3-08-4200 | 820 W | 980 × 395 × 145 mm | 230 VAC | 50/60 Hz | stainless steel | 954 × 376 mm | IP54/IP24 |
| AC-WM3-08-6000 | 820 W | 980 × 395 × 145 mm | 400 VAC | 50/60 Hz | sheet steel | 954 × 376 mm | IP54/IP24 |
| AC-WM3-08-6200 | 820 W | 980 × 395 × 145 mm | 400 VAC | 50/60 Hz | stainless steel | 954 × 376 mm | IP54/IP24 |
| AC-WM3-11-4000 | 1100 W | 1250 × 395 × 145 mm | 230 VAC | 50/60 Hz | sheet steel | 1214 × 376 mm | IP54/IP24 |
| AC-WM3-11-4200 | 1100 W | 1250 × 395 × 145 mm | 230 VAC | 50/60 Hz | stainless steel | 1214 × 376 mm | IP54/IP24 |
| AC-WM3-11-6000 | 1100 W | 1250 × 395 × 145 mm | 400 VAC | 50/60 Hz | sheet steel | 1214 × 376 mm | IP54/IP24 |
| AC-WM3-11-6200 | 1100 W | 1250 × 395 × 145 mm | 400 VAC | 50/60 Hz | stainless steel | 1214 × 376 mm | IP54/IP24 |
| AC-WM3-15-4000 | 1500 W | 1550 × 395 × 145 mm | 230 VAC | 50/60 Hz | sheet steel | 1531 × 376 mm | IP54/IP24 |
| AC-WM3-15-4200 | 1500 W | 1550 × 395 × 145 mm | 230 VAC | 50/60 Hz | stainless steel | 1531 × 376 mm | IP54/IP24 |
| AC-WM3-15-6000 | 1500 W | 1550 × 395 × 145 mm | 400 VAC | 50/60 Hz | sheet steel | 1531 × 376 mm | IP54/IP24 |
| AC-WM3-15-6200 | 1500 W | 1550 × 395 × 145 mm | 400 VAC | 50/60 Hz | stainless steel | 1531 × 376 mm | IP54/IP24 |

* Other input voltage options available upon request.

Cooling units COMPACT (wall-mounted)

| Code | Cooling capacity | Dimensions H × W × D | Voltage * | Frequency | Material | Cut-out dimensions | Degree of protection |
|----------------|------------------|----------------------|-----------|-----------|-----------------|--------------------|----------------------|
| AC-WM4-03-4000 | 320/360 W | 500 × 280 × 200 mm | 230 VAC | 50/60 Hz | Sheet steel | 480 × 240 mm | IP54/IP24 |
| AC-WM4-03-4200 | 320/360 W | 500 × 280 × 200 mm | 230 VAC | 50/60 Hz | Stainless steel | 480 × 240 mm | IP54/IP24 |
| AC-WM4-05-4000 | 550/620 W | 650 × 315 × 260 mm | 230 VAC | 50/60 Hz | Sheet steel | 635 × 275 mm | IP54/IP24 |
| AC-WM4-05-4200 | 550/620 W | 650 × 315 × 260 mm | 230 VAC | 50/60 Hz | Stainless steel | 635 × 275 mm | IP54/IP24 |
| AC-WM4-05-6000 | 550/620 W | 650 × 315 × 260 mm | 400 VAC | 50/60 Hz | Sheet steel | 635 × 275 mm | IP54/IP24 |
| AC-WM4-05-6200 | 550/620 W | 650 × 315 × 260 mm | 400 VAC | 50/60 Hz | Stainless steel | 635 × 275 mm | IP54/IP24 |
| AC-WM4-08-4000 | 750/780 W | 650 × 315 × 260 mm | 230 VAC | 50/60 Hz | Sheet steel | 635 × 275 mm | IP54/IP24 |
| AC-WM4-08-4200 | 750/780 W | 650 × 315 × 260 mm | 230 VAC | 50/60 Hz | Stainless steel | 635 × 275 mm | IP54/IP24 |
| AC-WM4-08-6000 | 750 W | 650 × 315 × 260 mm | 400 VAC | 50/60 Hz | Sheet steel | 635 × 275 mm | IP54/IP24 |
| AC-WM4-08-6200 | 750 W | 650 × 315 × 260 mm | 400 VAC | 50/60 Hz | Stainless steel | 635 × 275 mm | IP54/IP24 |
| AC-WM4-10-4000 | 1000/1080 W | 650 × 315 × 260 mm | 230 VAC | 50/60 Hz | Sheet steel | 635 × 275 mm | IP54/IP24 |
| AC-WM4-10-4200 | 1000/1080 W | 650 × 315 × 260 mm | 230 VAC | 50/60 Hz | Stainless steel | 635 × 275 mm | IP54/IP24 |
| AC-WM4-10-6000 | 1000 W | 650 × 315 × 260 mm | 400 VAC | 50/60 Hz | Sheet steel | 635 × 275 mm | IP54/IP24 |
| AC-WM4-10-6200 | 1000 W | 650 × 315 × 260 mm | 400 VAC | 50/60 Hz | Stainless steel | 635 × 275 mm | IP54/IP24 |
| AC-WM4-15-4000 | 1500/1630 W | 980 × 395 × 260 mm | 230 VAC | 50/60 Hz | Sheet steel | 920 × 335 mm | IP54/IP24 |
| AC-WM4-15-4200 | 1500/1630 W | 980 × 395 × 260 mm | 230 VAC | 50/60 Hz | Stainless steel | 920 × 335 mm | IP54/IP24 |
| AC-WM4-15-6000 | 1500 W | 980 × 395 × 260 mm | 400 VAC | 50/60 Hz | Sheet steel | 920 × 335 mm | IP54/IP24 |
| AC-WM4-15-6200 | 1500 W | 980 × 395 × 260 mm | 400 VAC | 50/60 Hz | Stainless steel | 920 × 335 mm | IP54/IP24 |
| AC-WM4-20-4000 | 2000 W | 980 × 395 × 260 mm | 230 VAC | 50/60 Hz | Sheet steel | 920 × 335 mm | IP54/IP24 |
| AC-WM4-20-4200 | 2000 W | 980 × 395 × 260 mm | 230 VAC | 50/60 Hz | Stainless steel | 920 × 335 mm | IP54/IP24 |
| AC-WM4-20-6000 | 2000 W | 980 × 395 × 260 mm | 400 VAC | 50/60 Hz | Sheet steel | 920 × 335 mm | IP54/IP24 |
| AC-WM4-20-6200 | 2000 W | 980 × 395 × 260 mm | 400 VAC | 50/60 Hz | Stainless steel | 920 × 335 mm | IP54/IP24 |
| AC-WM4-25-4000 | 2500 W | 1230 × 500 × 340 mm | 230 VAC | 50/60 Hz | Sheet steel | 1130 × 430 mm | IP54/IP24 |
| AC-WM4-25-4200 | 2500 W | 1230 × 500 × 340 mm | 230 VAC | 50/60 Hz | Stainless steel | 1130 × 430 mm | IP54/IP24 |
| AC-WM4-25-6000 | 2500 W | 1230 × 500 × 340 mm | 400 VAC | 50/60 Hz | Sheet steel | 1130 × 430 mm | IP54/IP24 |
| AC-WM4-25-6200 | 2500 W | 1230 × 500 × 340 mm | 400 VAC | 50/60 Hz | Stainless steel | 1130 × 430 mm | IP54/IP24 |
| AC-WM4-30-4000 | 3000 W | 1230 × 500 × 340 mm | 230 VAC | 50/60 Hz | Sheet steel | 1130 × 430 mm | IP54/IP24 |
| AC-WM4-30-4200 | 3000 W | 1230 × 500 × 340 mm | 230 VAC | 50/60 Hz | Stainless steel | 1130 × 430 mm | IP54/IP24 |
| AC-WM4-30-6000 | 3000 W | 1230 × 500 × 340 mm | 400 VAC | 50/60 Hz | Sheet steel | 1130 × 430 mm | IP54/IP24 |
| AC-WM4-30-6200 | 3000 W | 1230 × 500 × 340 mm | 400 VAC | 50/60 Hz | Stainless steel | 1130 × 430 mm | IP54/IP24 |
| AC-WM4-40-4000 | 4000 W | 1230 × 500 × 340 mm | 230 VAC | 50/60 Hz | Sheet steel | 1130 × 430 mm | IP54/IP24 |
| AC-WM4-40-4200 | 4000 W | 1230 × 500 × 340 mm | 230 VAC | 50/60 Hz | Stainless steel | 1130 × 430 mm | IP54/IP24 |
| AC-WM4-40-6000 | 4000 W | 1230 × 500 × 340 mm | 400 VAC | 50/60 Hz | Sheet steel | 1130 × 430 mm | IP54/IP24 |
| AC-WM4-40-6200 | 4000 W | 1230 × 500 × 340 mm | 400 VAC | 50/60 Hz | Stainless steel | 1130 × 430 mm | IP54/IP24 |

* Other input voltage options available upon request.

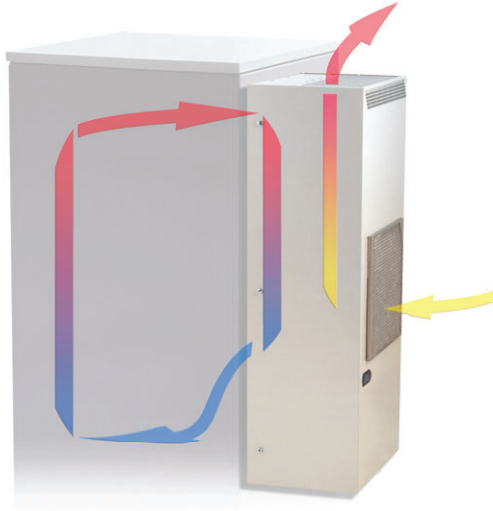
Cooling units TOP (top mounting)

| Code | Cooling capacity | Dimensions H × W × D | Voltage * | Frequency | Material | Cut-out dimensions | Degree of protection |
|----------------|------------------|----------------------|-----------|-----------|-----------------|----------------------------|----------------------|
| AC-TM3-04-4000 | 450/460 W | 230 × 430 × 330 mm | 230 VAC | 50/60 Hz | Sheet steel | 142 × 98 mm/142 × 147.5 mm | IP54/IP24 |
| AC-TM3-04-4200 | 450/460 W | 230 × 430 × 330 mm | 230 VAC | 50/60 Hz | Stainless steel | 142 × 98 mm/142 × 147.5 mm | IP54/IP24 |
| AC-TM3-11-4000 | 1100/1150 W | 400 × 600 × 400 mm | 230 VAC | 50/60 Hz | Sheet steel | 108 × 530 mm (×2) | IP54/IP24 |
| AC-TM3-11-4200 | 1100/1150 W | 400 × 600 × 400 mm | 230 VAC | 50/60 Hz | Stainless steel | 108 × 530 mm (×2) | IP54/IP24 |
| AC-TM3-11-6000 | 1100/1150 W | 400 × 600 × 400 mm | 400 VAC | 50/60 Hz | Sheet steel | 108 × 530 mm (×2) | IP54/IP24 |
| AC-TM3-11-6200 | 1100/1150 W | 400 × 600 × 400 mm | 400 VAC | 50/60 Hz | Stainless steel | 108 × 530 mm (×2) | IP54/IP24 |
| AC-TM3-15-4000 | 1500 W | 410 × 600 × 400 mm | 230 VAC | 50/60 Hz | Sheet steel | 363 × 236.4 mm (×2) | IP54/IP24 |
| AC-TM3-15-4200 | 1500 W | 410 × 600 × 400 mm | 230 VAC | 50/60 Hz | Stainless steel | 363 × 236.4 mm (×2) | IP54/IP24 |
| AC-TM3-15-6000 | 1500 W | 410 × 600 × 400 mm | 400 VAC | 50/60 Hz | Sheet steel | 363 × 236.4 mm (×2) | IP54/IP24 |
| AC-TM3-15-6200 | 1500 W | 410 × 600 × 400 mm | 400 VAC | 50/60 Hz | Stainless steel | 363 × 236.4 mm (×2) | IP54/IP24 |
| AC-TM3-20-6000 | 2000 W | 410 × 600 × 400 mm | 400 VAC | 50/60 Hz | Sheet steel | 363 × 236.4 mm (×2) | IP54/IP24 |
| AC-TM3-20-6200 | 2000 W | 410 × 600 × 400 mm | 400 VAC | 50/60 Hz | Stainless steel | 363 × 236.4 mm (×2) | IP54/IP24 |

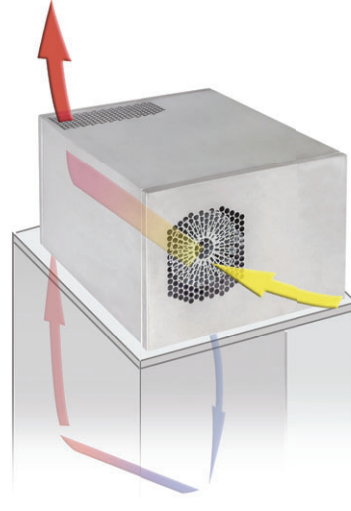
* Other input voltage options available upon request.

AIR FLOW

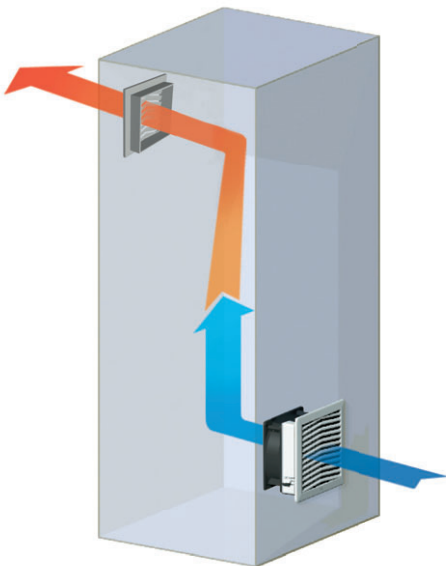
Cooling units—wall-mounted



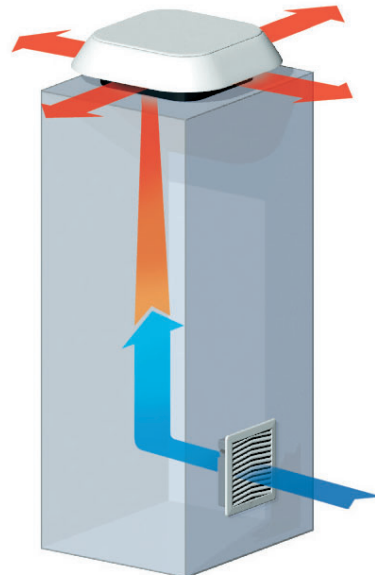
Cooling units—top



Fans—wall-mounted

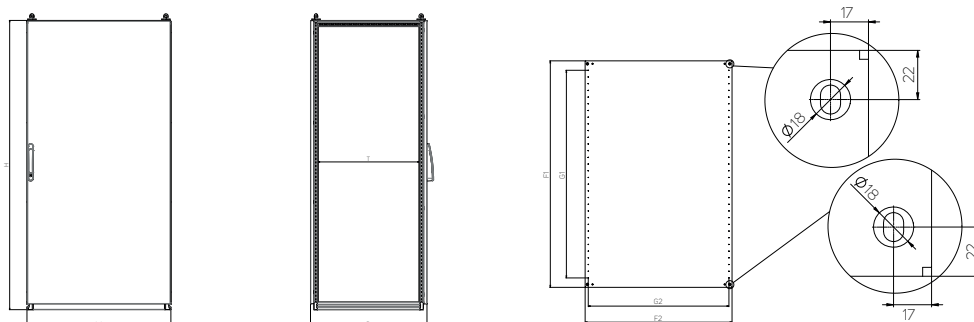


Fans—top



TECHNICAL DRAWINGS

FSE—free-standing cabinets—sheet steel



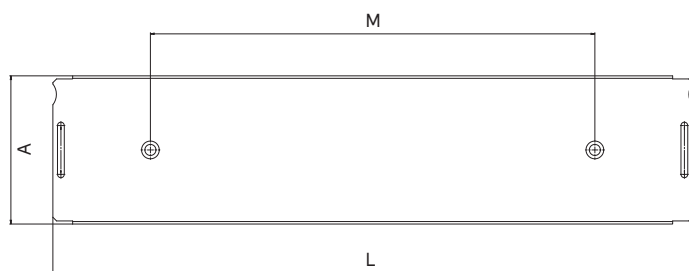
| Code | Height (mm) | Width (mm) | Depth (mm) | | Mounting plate (mm) | | | | Material thickness (mm) | | | Type of cable gland plate | # of doors |
|------------|-------------|------------|------------|-----|---------------------|------|------|------|-------------------------|------|----------------|---------------------------|------------|
| | H* | W* | D* | T | F1 | F2 | G1 | G2 | Cabinet | Door | Mounting plate | | |
| FSE-180405 | 1800 | 400 | 500 | 410 | 1691.2 | 297 | 1550 | 250 | 1.25 | 2 | 3 | B1; C1 | 1 |
| FSE-180406 | 1800 | 400 | 600 | 510 | 1691.2 | 297 | 1550 | 250 | 1.25 | 2 | 3 | A1; B1; C1 | 1 |
| FSE-180604 | 1800 | 600 | 400 | 310 | 1691.2 | 497 | 1550 | 450 | 1.25 | 2 | 3 | A6; B2 | 1 |
| FSE-180605 | 1800 | 600 | 500 | 410 | 1691.2 | 497 | 1550 | 450 | 1.25 | 2 | 3 | B2; C2 | 1 |
| FSE-180606 | 1800 | 600 | 600 | 510 | 1691.2 | 497 | 1550 | 450 | 1.25 | 2 | 3 | A2; B2; C2 | 1 |
| FSE-180804 | 1800 | 800 | 400 | 310 | 1691.2 | 697 | 1550 | 650 | 1.25 | 2 | 3 | A7; B3 | 1 |
| FSE-180805 | 1800 | 800 | 500 | 410 | 1691.2 | 697 | 1550 | 650 | 1.25 | 2 | 3 | B3; C3 | 1 |
| FSE-280805 | 1800 | 800 | 500 | 410 | 1691.2 | 697 | 1550 | 650 | 1.25 | 2 | 3 | B3; C3 | 2 |
| FSE-180806 | 1800 | 800 | 600 | 510 | 1691.2 | 697 | 1550 | 650 | 1.25 | 2 | 3 | A3; B3; C3 | 1 |
| FSE-280806 | 1800 | 800 | 600 | 510 | 1691.2 | 697 | 1550 | 650 | 1.25 | 2 | 3 | A3; B3; C3 | 2 |
| FSE-181004 | 1800 | 1000 | 400 | 310 | 1691.2 | 897 | 1550 | 850 | 1.25 | 2 | 3 | A8; B4 | 1 |
| FSE-281004 | 1800 | 1000 | 400 | 310 | 1691.2 | 897 | 1550 | 850 | 1.25 | 2 | 3 | A8; B4 | 2 |
| FSE-181005 | 1800 | 1000 | 500 | 410 | 1691.2 | 897 | 1550 | 850 | 1.25 | 2 | 3 | B4; C4 | 1 |
| FSE-181006 | 1800 | 1000 | 600 | 510 | 1691.2 | 897 | 1550 | 850 | 1.25 | 2 | 3 | A4; B4; C4 | 1 |
| FSE-281204 | 1800 | 1200 | 400 | 310 | 1691.2 | 1097 | 1550 | 1050 | 1.25 | 2 | 3 | A9; B5 | 2 |
| FSE-281205 | 1800 | 1200 | 500 | 410 | 1691.2 | 1097 | 1550 | 1050 | 1.25 | 2 | 3 | B5; C5 | 2 |
| FSE-281206 | 1800 | 1200 | 600 | 510 | 1691.2 | 1097 | 1550 | 1050 | 1.25 | 2 | 3 | A5; B5; C5 | 2 |
| FSE-200405 | 2000 | 400 | 500 | 410 | 1891.2 | 297 | 1750 | 250 | 1.25 | 2 | 3 | B1; C1 | 1 |
| FSE-200406 | 2000 | 400 | 600 | 510 | 1891.2 | 297 | 1750 | 250 | 1.25 | 2 | 3 | A1; B1; C1 | 1 |
| FSE-200604 | 2000 | 600 | 400 | 310 | 1891.2 | 497 | 1750 | 250 | 1.25 | 2 | 3 | A6; B2 | 1 |
| FSE-200605 | 2000 | 600 | 500 | 410 | 1891.2 | 497 | 1750 | 250 | 1.25 | 2 | 3 | B2; C2 | 1 |
| FSE-200606 | 2000 | 600 | 600 | 510 | 1891.2 | 497 | 1750 | 250 | 1.25 | 2 | 3 | A2; B2; C2 | 1 |
| FSE-200608 | 2000 | 600 | 800 | 710 | 1891.2 | 497 | 1750 | 250 | 1.25 | 2 | 3 | A2; 2× B2; C2 | 1 |
| FSE-200804 | 2000 | 800 | 400 | 310 | 1891.2 | 697 | 1750 | 650 | 1.25 | 2 | 3 | A7; B3 | 1 |
| FSE-200805 | 2000 | 800 | 500 | 410 | 1891.2 | 697 | 1750 | 650 | 1.25 | 2 | 3 | B3; C3 | 1 |
| FSE-200806 | 2000 | 800 | 600 | 510 | 1891.2 | 697 | 1750 | 650 | 1.25 | 2 | 3 | A3; B3; C3 | 1 |
| FSE-200808 | 2000 | 800 | 800 | 710 | 1891.2 | 697 | 1750 | 650 | 1.25 | 2 | 3 | A3; 2× B3; C3 | 1 |
| FSE-201004 | 2000 | 1000 | 400 | 310 | 1891.2 | 897 | 1750 | 850 | 1.25 | 2 | 3 | A8; B4 | 1 |
| FSE-301004 | 2000 | 1000 | 400 | 310 | 1891.2 | 897 | 1750 | 850 | 1.25 | 2 | 3 | A8; B4 | 2 |
| FSE-201005 | 2000 | 1000 | 500 | 410 | 1891.2 | 897 | 1750 | 850 | 1.25 | 2 | 3 | B4; C4 | 1 |
| FSE-301005 | 2000 | 1000 | 500 | 410 | 1891.2 | 897 | 1750 | 850 | 1.25 | 2 | 3 | B4; C4 | 2 |
| FSE-201006 | 2000 | 1000 | 600 | 510 | 1891.2 | 897 | 1750 | 850 | 1.25 | 2 | 3 | A4; B4; C4 | 1 |
| FSE-301006 | 2000 | 1000 | 600 | 510 | 1891.2 | 897 | 1750 | 850 | 1.25 | 2 | 3 | A4; B4; C4 | 2 |
| FSE-201008 | 2000 | 1000 | 800 | 710 | 1891.2 | 897 | 1750 | 850 | 1.25 | 2 | 3 | A4; 2× B4; C4 | 1 |

* Internal dimensions: H—90 mm, W—90 mm, D—90 mm.

| Code | Height (mm) | Width (mm) | Depth (mm) | | Mounting plate (mm) | | | | Material thickness (mm) | | | Type of cable gland plate | # of doors |
|------------|-------------|------------|------------|-----|---------------------|------|------|------|-------------------------|------|----------------|---------------------------|------------|
| | H * | W * | D * | T | F1 | F2 | G1 | G2 | Cabinet | Door | Mounting plate | | |
| FSE-301204 | 2 000 | 1200 | 400 | 310 | 1891.2 | 1097 | 1750 | 1050 | 1.25 | 2 | 3 | 2× A9; 2× B5 | 2 |
| FSE-301205 | 2 000 | 1200 | 500 | 410 | 1891.2 | 1097 | 1750 | 1050 | 1.25 | 2 | 3 | 2× B5; 2× C5 | 2 |
| FSE-301206 | 2 000 | 1200 | 600 | 510 | 1891.2 | 1097 | 1750 | 1050 | 1.25 | 2 | 3 | 2× A5; 2× B5; 2× C5 | 2 |
| FSE-301208 | 2 000 | 1200 | 800 | 710 | 1891.2 | 1097 | 1750 | 1050 | 1.25 | 2 | 3 | 2× A5; 4× B5; 2× C5 | 2 |
| FSE-220406 | 2 200 | 400 | 600 | 510 | 2 091.2 | 297 | 1950 | 250 | 1.25 | 2 | 3 | A1; B1; C1 | 1 |
| FSE-220606 | 2 200 | 600 | 600 | 510 | 2 091.2 | 497 | 1950 | 450 | 1.25 | 2 | 3 | A2; B2; C2 | 1 |
| FSE-220608 | 2 200 | 600 | 800 | 710 | 2 091.2 | 497 | 1950 | 450 | 1.25 | 2 | 3 | A2; 2× B2; C2 | 1 |
| FSE-220806 | 2 200 | 800 | 600 | 510 | 2 091.2 | 697 | 1950 | 650 | 1.25 | 2 | 3 | A3; B3; C3 | 1 |
| FSE-220808 | 2 200 | 800 | 800 | 710 | 2 091.2 | 697 | 1950 | 650 | 1.25 | 2 | 3 | A3; 2× B3; C3 | 1 |
| FSE-221006 | 2 200 | 1000 | 600 | 510 | 2 091.2 | 897 | 1950 | 850 | 1.25 | 2 | 3 | A4; B4; C4 | 1 |
| FSE-321206 | 2 200 | 1200 | 600 | 510 | 2 091.2 | 1097 | 1950 | 1050 | 1.25 | 2 | 3 | 2× A5; 2× B5; 2× C5 | 2 |
| FSE-321208 | 2 200 | 1200 | 800 | 710 | 2 091.2 | 1097 | 1950 | 1050 | 1.25 | 2 | 3 | 2× A5; 4× B5; 2× C5 | 2 |

* Internal dimensions: H—90 mm, W—90 mm, D—90 mm.

Cable gland plate for free-standing cabinets FSE



| Type | Dimensions W × D (mm) | A | L | M |
|---------------------------------|-----------------------|-----|-----|-----|
| Cable gland plate type A | | | | |
| A1 | 400 × 90 | 90 | 257 | 100 |
| A2 | 600 × 90 | 90 | 457 | 300 |
| A3 | 800 × 90 | 90 | 657 | 500 |
| A4 | 1000 × 90 | 90 | 857 | 700 |
| A5 | 1200 × 90 | 90 | 518 | 360 |
| A6 | 600 × 120 | 120 | 457 | 300 |
| A7 | 800 × 120 | 120 | 657 | 500 |
| A8 | 1000 × 120 | 120 | 857 | 700 |
| A9 | 1200 × 120 | 120 | 518 | 360 |
| Cable gland plate type B | | | | |
| B1 | 400 × 200 | 200 | 257 | 100 |
| B2 | 600 × 200 | 200 | 457 | 300 |
| B3 | 800 × 200 | 200 | 657 | 500 |
| B4 | 1000 × 200 | 200 | 857 | 700 |
| B5 | 1200 × 200 | 200 | 518 | 360 |
| Cable gland plate type C | | | | |
| C1 | 400 × 235 | 235 | 257 | 100 |
| C2 | 600 × 235 | 235 | 457 | 300 |
| C3 | 800 × 235 | 235 | 657 | 500 |
| C4 | 1000 × 235 | 235 | 857 | 700 |
| C5 | 1200 × 235 | 235 | 518 | 360 |

FSE—FREE-STANDING CABINETS

HEAT LOSS DISPERSION

FSE—free-standing cabinets—
measured with heat inside cabinet $\Delta T = 15\text{ K}$

| Code | Cabinet dimensions (mm) | | | Thickness of the material (mm) | | Number of doors (pcs) | Total area of cabinet (m ²) | Total power dissipation (W) |
|------------|-------------------------|-------|-------|--------------------------------|------|-----------------------|---|-----------------------------|
| | Height | Width | Depth | Body | Door | | | |
| FSE-180405 | 1800 | 400 | 500 | 1.5 | 2.00 | 1 | 2.920 | 149.5 |
| FSE-180406 | 1800 | 400 | 600 | 1.5 | 2.00 | 1 | 4.080 | 197.4 |
| FSE-180604 | 1800 | 600 | 400 | 1.5 | 2.00 | 1 | 4.080 | 211.8 |
| FSE-180605 | 1800 | 600 | 500 | 1.5 | 2.00 | 1 | 4.560 | 231.6 |
| FSE-180606 | 1800 | 600 | 600 | 1.5 | 2.00 | 1 | 5.040 | 251.5 |
| FSE-180804 | 1800 | 800 | 400 | 1.5 | 2.00 | 1 | 4.960 | 262.6 |
| FSE-180805 | 1800 | 800 | 500 | 1.5 | 2.00 | 1 | 5.480 | 284.1 |
| FSE-280805 | 1800 | 800 | 500 | 1.5 | 2.00 | 2 | 5.480 | 284.1 |
| FSE-180806 | 1800 | 800 | 600 | 1.5 | 2.00 | 1 | 6.000 | 305.6 |
| FSE-280806 | 1800 | 800 | 600 | 1.5 | 2.00 | 2 | 6.000 | 305.6 |
| FSE-181004 | 1800 | 1000 | 400 | 1.5 | 2.00 | 1 | 5.840 | 313.4 |
| FSE-281004 | 1800 | 1000 | 400 | 1.5 | 2.00 | 2 | 5.840 | 313.4 |
| FSE-181005 | 1800 | 1000 | 500 | 1.5 | 2.00 | 1 | 6.400 | 336.5 |
| FSE-181006 | 1800 | 1000 | 600 | 1.5 | 2.00 | 1 | 6.960 | 359.7 |
| FSE-281204 | 1800 | 1200 | 400 | 1.5 | 2.00 | 2 | 6.720 | 364.2 |
| FSE-281205 | 1800 | 1200 | 500 | 1.5 | 2.00 | 2 | 7.320 | 389.0 |
| FSE-281206 | 1800 | 1200 | 600 | 1.5 | 2.00 | 2 | 7.920 | 413.8 |
| FSE-200405 | 2000 | 400 | 500 | 1.5 | 2.00 | 1 | 4.000 | 197.3 |
| FSE-200406 | 2000 | 400 | 600 | 1.5 | 2.00 | 1 | 4.480 | 217.1 |
| FSE-200604 | 2000 | 600 | 400 | 1.5 | 2.00 | 1 | 4.480 | 233.2 |
| FSE-200605 | 2000 | 600 | 500 | 1.5 | 2.00 | 1 | 5.000 | 254.6 |
| FSE-200606 | 2000 | 600 | 600 | 1.5 | 2.00 | 1 | 5.520 | 276.1 |
| FSE-200608 | 2000 | 600 | 800 | 1.5 | 2.00 | 1 | 6.560 | 319.0 |
| FSE-200804 | 2000 | 800 | 400 | 1.5 | 2.00 | 1 | 5.440 | 288.9 |
| FSE-200805 | 2000 | 800 | 500 | 1.5 | 2.00 | 1 | 6.000 | 312.0 |
| FSE-200806 | 2000 | 800 | 600 | 1.5 | 2.00 | 1 | 6.560 | 335.1 |
| FSE-200808 | 2000 | 800 | 800 | 1.5 | 2.00 | 1 | 7.680 | 381.3 |
| FSE-201004 | 2000 | 1000 | 400 | 1.5 | 2.00 | 1 | 6.400 | 344.6 |
| FSE-301004 | 2000 | 1000 | 400 | 1.5 | 2.00 | 2 | 6.400 | 344.6 |
| FSE-201005 | 2000 | 1000 | 500 | 1.5 | 2.00 | 1 | 7.000 | 369.3 |
| FSE-301005 | 2000 | 1000 | 500 | 1.5 | 2.00 | 2 | 7.000 | 369.3 |
| FSE-201006 | 2000 | 1000 | 600 | 1.5 | 2.00 | 1 | 7.600 | 394.1 |
| FSE-301006 | 2000 | 1000 | 600 | 1.5 | 2.00 | 2 | 7.600 | 394.1 |
| FSE-201008 | 2000 | 1000 | 800 | 1.5 | 2.00 | 1 | 8.800 | 443.7 |
| FSE-301204 | 2000 | 1200 | 400 | 1.5 | 2.00 | 2 | 7.360 | 400.3 |
| FSE-301205 | 2000 | 1200 | 500 | 1.5 | 2.00 | 2 | 8.000 | 426.7 |
| FSE-301206 | 2000 | 1200 | 600 | 1.5 | 2.00 | 2 | 8.640 | 453.1 |
| FSE-301208 | 2000 | 1200 | 800 | 1.5 | 2.00 | 2 | 9.920 | 506.0 |
| FSE-220406 | 2200 | 400 | 600 | 1.5 | 2.00 | 1 | 4.880 | 236.8 |
| FSE-220606 | 2200 | 600 | 600 | 1.5 | 2.00 | 1 | 6.000 | 300.7 |
| FSE-220608 | 2200 | 600 | 800 | 1.5 | 2.00 | 1 | 7.120 | 347.0 |
| FSE-220806 | 2200 | 800 | 600 | 1.5 | 2.00 | 1 | 7.120 | 364.7 |
| FSE-220808 | 2200 | 800 | 800 | 1.5 | 2.00 | 1 | 8.320 | 414.2 |
| FSE-221006 | 2200 | 1000 | 600 | 1.5 | 2.00 | 1 | 8.240 | 428.6 |
| FSE-321206 | 2200 | 1200 | 600 | 1.5 | 2.00 | 2 | 9.360 | 492.5 |
| FSE-321208 | 2200 | 1200 | 800 | 1.5 | 2.00 | 2 | 10.720 | 548.6 |

SAFETY WARNING SIGNS

DANGER: ELECTRIC SHOCK RISK



**DANGER:
ELECTRIC
SHOCK RISK**



**DANGER:
ELECTRIC
SHOCK RISK**

- Material: Oracal 640 self-adhesive foil, easily attachable to smooth surfaces
- Print: UV LED technology

| Code | Height (mm) | Width (mm) | Package * |
|-------------|-------------|------------|-----------|
| ID-OS-H1007 | 105 | 74 | 1 set |
| ID-OS-H0705 | 74 | 52 | 1 set |
| ID-OS-H0309 | 30 | 90 | 1 set |

* 1 set—5 pcs.

DO NOT EXTINGUISH WITH WATER OR FOAM



**DO NOT
EXTINGUISH WITH
WATER OR FOAM**



**DO NOT
EXTINGUISH WITH
WATER OR FOAM**

- Material: Oracal 640 self-adhesive foil, easily attachable to smooth surfaces
- Print: UV LED technology

| Code | Height (mm) | Width (mm) | Package * |
|-------------|-------------|------------|-----------|
| ID-OS-F1007 | 105 | 74 | 1 set |
| ID-OS-F0705 | 74 | 52 | 1 set |
| ID-OS-F0309 | 30 | 90 | 1 set |

* 1 set—5 pcs.

SWITCH OFF IN CASE OF EMERGENCY



**SWITCH OFF
IN CASE
OF EMERGENCY**



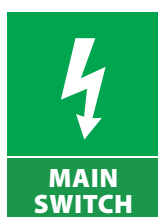
**SWITCH OFF
IN CASE
OF EMERGENCY**

- Material: Oracal 640 self-adhesive foil, easily attachable to smooth surfaces
- Print: UV LED technology

| Code | Height (mm) | Width (mm) | Package * |
|-------------|-------------|------------|-----------|
| ID-OS-G1007 | 105 | 74 | 1 set |
| ID-OS-G0705 | 74 | 52 | 1 set |
| ID-OS-G0309 | 30 | 90 | 1 set |

* 1 set—5 pcs.

MAIN SWITCH



- Material: Oracal 640 self-adhesive foil, easily attachable to smooth surfaces
- Print: UV LED technology

| Code | Height (mm) | Width (mm) | Package * |
|-------------|-------------|------------|-----------|
| ID-OS-E1007 | 105 | 74 | 1 set |
| ID-OS-E0705 | 74 | 52 | 1 set |
| ID-OS-E0309 | 30 | 90 | 1 set |

* 1 set—5 pcs.

MULTIPLE MESSAGES—DANGER ELECTRIC SHOCK RISK; DO NOT EXTINGUISH WITH WATER OR FOAM



**DANGER:
ELECTRIC
SHOCK RISK**



**DO NOT
EXTINGUISH WITH
WATER OR FOAM**

- Material: Oracal 640 self-adhesive foil, easily attachable to smooth surfaces
- Print: UV LED technology

| Code | Height (mm) | Width (mm) | Package * |
|-------------|-------------|------------|-----------|
| ID-OS-B0710 | 74 | 105 | 1 set |

* 1 set—5 pcs.

MULTIPLE MESSAGES—MAIN SWITCH, SWITCH OFF IN CASE OF EMERGENCY



**MAIN
SWITCH**



**SWITCH OFF
IN CASE
OF EMERGENCY**

- Material: Oracal 640 self-adhesive foil, easily attachable to smooth surfaces
- Print: UV LED technology

| Code | Height (mm) | Width (mm) | Package * |
|-------------|-------------|------------|-----------|
| ID-OS-C0710 | 74 | 105 | 1 set |

* 1 set—5 pcs.

MULTIPLE MESSAGES (4)



**DANGER:
ELECTRIC
SHOCK RISK**



**DO NOT
EXTINGUISH WITH
WATER OR FOAM**



**MAIN
SWITCH**



**SWITCH OFF
IN CASE
OF EMERGENCY**

- Material: Oracal 640 self-adhesive foil, easily attachable to smooth surfaces
- Print: UV LED technology

| Code | Height (mm) | Width (mm) | Package * |
|-------------|-------------|------------|-----------|
| ID-OS-D1410 | 148 | 105 | 1 set |

| | | | |
|-------------|-----|----|-------|
| ID-OS-D1007 | 105 | 74 | 1 set |
|-------------|-----|----|-------|

* 1 set—5 pcs.

DANGER



- Material: Oracal 640 self-adhesive foil, easily attachable to smooth surfaces
- Print: UV LED technology

| Code | Height (mm) | Width (mm) | Package * |
|-------------|-------------|------------|-----------|
| ID-OS-A0809 | 80 | 90 | 1 set |

| | | | |
|-------------|----|------|-------|
| ID-OS-A0606 | 60 | 67.5 | 1 set |
|-------------|----|------|-------|

* 1 set—5 pcs.



Labelling cabinets, your logo and other sticker dimensions available on request.



CONTEG, spol. s r.o.

Stetkova 1638/18

140 00 Prague 4

Czech Republic

Tel.: +420 565 300 358

conteg@conteg.com

www.conteg.com

CONTEG